



*16<sup>th</sup> Annual*

# **BULL SALE**

Friday, November 21, 2014

Tetonia, Idaho

# 16<sup>th</sup> Annual Bull Sale

## Friday – November 21, 2014

118 – Registered Angus Bulls • 12 – Registered SimAngus Bulls  
15 – Registered Angus Bred Heifers • 31 – Commercial Angus Bred Heifers

*Please join us for a pre-sale dinner at the  
North End Café, Teton, ID, Thursday evening at 6:30 p.m.*

**Complimentary lunch will be served at noon sale day.**

**Sale at 1 P.M. MST**

### **LOCATION:**

At the ranch 4 miles south and 1 mile west of Teton, ID  
(see map on page 1 of this sale book)

### **INSPECTION OF CATTLE:**

We invite you to inspect our cattle anytime. The bulls will be in their sale pens Tuesday, Wednesday and Thursday before the sale on Friday.... Drop by early and make your selection before sale day.

### **SALE ORDER:**

Bulls and heifers will sell in sale book order.

### **ACCOMMODATIONS:**

Super 8, Driggs, ID .....(208) 354-8888  
Cowboy Roadhouse Lodge, Victor, ID .....(208) 787-2755

### **HERD HEALTH:**

Our cattle are on a complete herd health program, and will sell with proper health papers for interstate shipment. In addition, we are federally licensed brucellosis free herd #IDCB03, and a level one Johne's free herd. All of the sale cattle have had a fall 8-way, de-wormed with Dectomax pour-on, and administered BOVI-SHIELD GOLD FP 5 VL5 HB.

### **FEED RATION FOR BULLS:**

Our bulls are developed in a practical manner, consistent with a mountain ranch. The bulls are raised without creep, and upon weaning fed a TMR to gain 2.5 lbs./day. This spring they were turned to grass, and were supplemented with hay starting in mid-September. They have not been fed any grain and have less than 0.10" of back fat. The bulls will sell in their working clothes.

### **TERMS AND CONDITIONS:**

We expect you to be completely happy with your purchase, and will do what we can to assure this is the case. All bulls are fully guaranteed as outlined in the Terms and Conditions of the American Angus Association effective June 7, 2012.

### **RETAINED INTEREST:**

We are retaining 1/3 interest in all bulls selling in the sale. As the bull buyer, you have complete control over bulls in which we share an interest. The bull buyer receives the salvage value of the bull. Our interest applies to semen sales, and the ability for us to collect semen on the bull. If we desire semen, we will have the bull collected at our expense and your convenience. If you sell the bull as a breeding bull, we maintain our interest.

### **WINTERING PROGRAM:**

We understand not everyone has the facilities to winter bulls. So, if you would like us to winter your bulls, we will do so for \$2.25/day. If you choose this option, please let the sale clerks know and we will settle for the feed upon pick-up or delivery.

### **FINANCING AVAILABLE:**

Please call Ken 208-221-3866 or CL 307-380-6021 for details about financing.

### **DELIVERY:**

Pick up your bulls within five days of the sale and receive a \$75 credit per bull. Otherwise, there is free delivery on the bulls and registered heifers to Idaho and adjoining states, including northern Colorado, with total purchases of \$2,500 or more. Animals selling further away will be delivered at cost, guaranteed not to exceed \$275 each. We will help arrange delivery of commercial heifers at buyer's expense.

### **REPRESENTATIVES:**

Jake Troutt, (208) 921-6774. . . . . American Angus Association  
Curt Cox, (307) 630-4604. . . . . Wyoming Livestock Roundup  
Jerry York, (208) 863-1172 . . . . . Western Livestock Journal

### **AUCTIONEER:**

Joe Goggins, (406) 861-5664

Announcements made sale day take precedence over printed material.

### **EPDs:**

The EPDs listed in this sale book are current as of October 8, 2014. Updated EPDs can be viewed at [www.angus.org](http://www.angus.org).



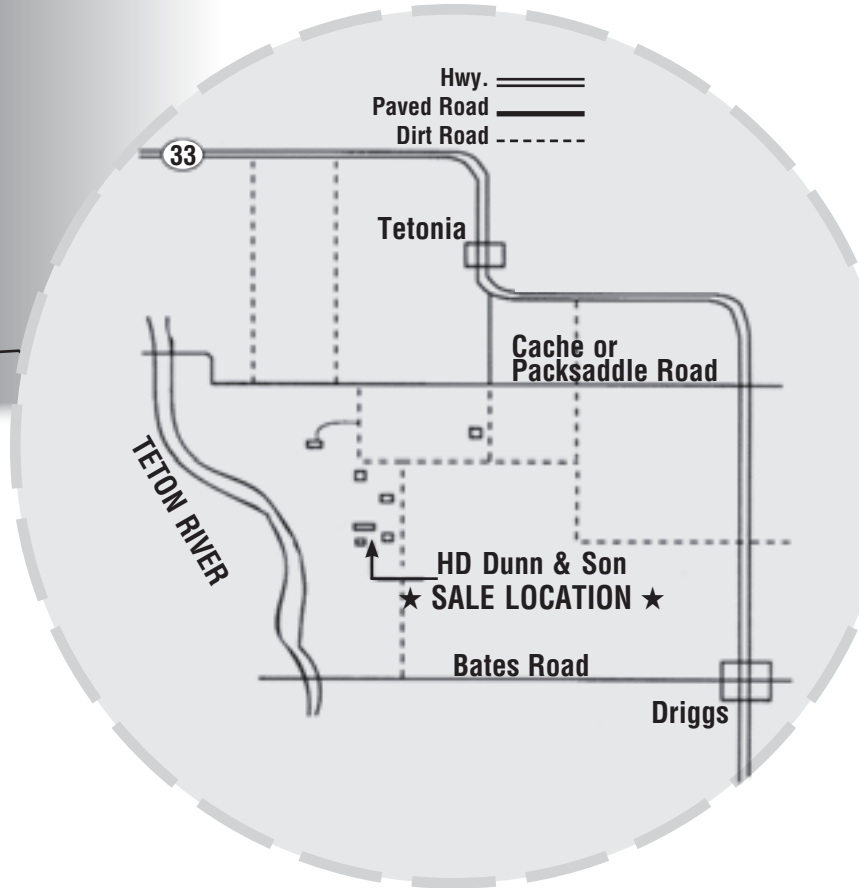
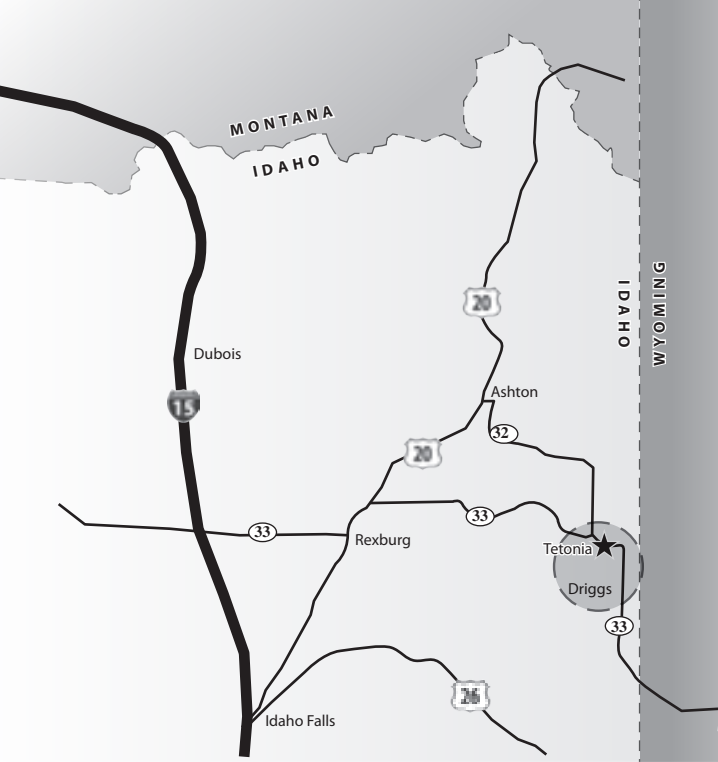
Visit the *Angus Journal*® Website,  
[www.angusjournal.com](http://www.angusjournal.com),  
and view this sale book online.

References: American Angus Association®, AHIR®, Angus Source®, CAB®, Pathfinder®



Ken Dunn  
208-221-3866  
[kendunn@tetonvalley.net](mailto:kendunn@tetonvalley.net)

C.L. Simper  
307-380-6021  
[rhodasimper@hotmail.com](mailto:rhodasimper@hotmail.com)



### **First Year Breeding Guarantee:**

All bulls selling for \$2,500 or more will be covered by this guarantee. If your bull is injured, and not able to naturally service cows, during the 90 days after initial turn-out we will give you credit toward a replacement bull or future sale. The credit will be equal to one-half of the bull's sale price, less one-half of his salvage value. Please have all injured bulls diagnosed by a veterinarian, and notify us before September 1, 2015 if you elect to make a claim.

Please note, this is not a life insurance policy. If you would like to purchase mortality insurance, an insurance representative will be available sale day.

### **Absentee Bidding:**

**We offer a 100% satisfaction guarantee on cattle purchased in your absence.**

- We invite you to call Ken Dunn or C.L. Simper before the sale to select the lots you would like to purchase. We will bid in your absence and assure your spending limit is not exceeded.

Ken Dunn (208) 221-3866 or C.L. Simper (307) 380-6021

- You may also call Curt Cox (Wyoming Livestock Roundup) 307-630-4604 or Jerry York (Western Livestock Journal) 208-863-1172 to place an order.
- This year we will not have a conference call line on sale day... If you cannot be with us sale day, please plan to come a few days before the sale and make your selections.
- We guarantee your satisfaction on bulls purchased in your absence.

**Expected Progeny Differences** are a prediction of how progeny of a sire will perform in each of the traits listed. EPDs are expressed in pounds. For example, Bull A has a weaning EPD of +50, and Bull B has a weaning EPD of +30. If these two bulls were used in your herd, on average, Bull A's calves would weigh 20 pounds more than Bull B's at weaning. EPDs are developed by the American Angus Association and are valuable for comparing the performance of animals within herd, and across herds.

## **CED - Calving Ease Direct EPD**

Calving ease direct is expressed as a difference in percentage of unassisted births, with a higher value indicating greater calving ease in first-calf heifers. It predicts the average difference in ease with which a sire's calves will be born when he is bred to first-calf heifers.

## **BW EPD - Birth Weight EPD**

This expresses the expected birth weights of a bull's progeny. This figure is valuable in selecting bulls to use on heifers. Typically, a BW EPD of less than 2.5 is preferred for heifers.

## **WW EPD - Weaning Weight Direct EPD**

This is a predictor of the sire's ability to transmit weaning growth to his progeny.

## **Milk EPD - Weaning Weight Maternal EPD**

The Milk EPD is the number of pounds of weaning weight that can be attributed to the milking ability of the bull's daughters.

## **YW EPD - Yearling Weight EPD**

This is a predictor of the sire's ability to transmit yearling growth to his progeny.

## **ACTUAL BW - Actual Birth Weight**

All of our calves are individually weighed at birth. This is their actual birth weight.

## **205 RATIO**

The measure of each bulls weaning performance relative to the others in his contemporary group. A ratio of 100 is average for the contemporary group. We manage our calves in two contemporary groups. One group is calves born to cows; the other is calves born to heifers.

## **365 RATIO**

The measure of each bulls yearling performance relative to the others in his contemporary group. A ratio of 100 is average for the contemporary group. The contemporary groups established at weaning are maintained through yearling.

## **ACT SCROTAL - Actual Scrotal**

This is the bull's actual scrotal circumference, as measured on September 10, 2014.

## **PAP SCORE - Actual Pulmonary Arterial Pressure Result in inches of mercury**

The PAP measurement is used to predict animals that are susceptible to developing pulmonary arterial hypertension (i.e. brisket disease) resulting in congestive right heart failure. Our PAP scores were taken by Tim Holt DVM of Gunnison, CO on September 8, 2014 when the bulls were roughly 16 months old.

## **MARB EPD - Marbling EPD**

Marbling EPD is expressed as a fraction of the difference in USDA marbling score of a sire's progeny compared to progeny of other sires.

## **RE EPD - Ribeye Area EPD**

Ribeye Area EPD is expressed in square inches and is a predictor of the difference in ribeye area of a sire's progeny compared to progeny of other sires.

## **\$EN - Cow Energy Value**

Cow Energy Value is expressed in dollars savings per cow per year, and assesses differences in cow energy requirements as an expected dollar savings difference in daughters of sires. A larger value is more favorable when comparing two animals (more dollars saved on feed energy expenses). Components for computing the cow \$EN savings difference include lactation energy requirements and energy costs associated with differences in mature cow size.

## **\$VALUE INDEXES**

\$Value indexes are multi-trait selection indexes, expressed in dollars per head, to assist beef producers by adding simplicity to genetic selection decisions. The \$Value is an estimate of how future progeny of each sire are expected to perform, on average, compared to progeny of other sires in the database if the sires were randomly mated to cows and if calves were exposed to the same environment.

## **\$W - Weaned Calf Value**

Weaned calf value quantifies four primary economic impact areas; birth weight, weaning weight, maternal milk, and mature cow size. \$W provides the expected dollar-per-head difference in future progeny preweaning performance in a multi-trait fashion.

## **\$F - Feedlot Value**

An index value expressed in dollars per head is the expected average difference in future progeny performance for post weaning merit compared to progeny of other sires. \$F uses weaning weight and yearling weight EPDs along with trait interrelationships and industry values for days-on-feed, ration costs, and cash cattle prices. Typical feedlot gain value, feed consumption, and cost differences are accounted for in the final calculation.

## **\$G - Grid Value**

An index value expressed in dollars per head is the expected average difference in future progeny performance for carcass grid merit compared to progeny of other sires. \$G combines quality grade and yield grade attributes, and is calculated for animals with carcass EPDs, ultrasound EPDs, or both. A three-year rolling average is used to establish typical industry economic values for quality and yield grade schedules. Quality grade premiums are specified for Prime, CAB, and Choice carcasses, as well as Select and Standard. Yield grade premiums are incorporated for YG1 and YG2 (high yielding carcasses), with discounts for YG4 and YG5 (low red meat yield). Grid impact in \$/cwt and \$/head is calculated from the yield and quality grade components, and then combined to arrive at the grid value \$G.

## **\$B - Beef Value**

An index value expressed in dollars per head is the expected average difference in future progeny performance for post weaning and carcass value compared to progeny of other sires. \$B is composed of two pieces: \$F and \$G. To align \$B with marketplace realities, and appropriately value the carcass weight in Angus cattle, the following factors are incorporated into the final calculations for \$B:

- \$B is not just the sum of \$F and \$G
- Projected carcass weight and its value are calculated, along with production cost differences.
- \$B takes into consideration discounts for heavyweight carcasses.
- Final adjustments are made to prevent double counting weight between feedlot and carcass segments.

The resulting \$B value is not designed to be driven by one factor such as quality, yield, or weight. Instead, it is a dynamic result of the application of commercial market values to Angus genetics for both feedlot and carcass merit.

## **Dam's Production**

This is the actual production record of the dam. For example, 5 WR 104 means the dam of the animal has had 5 calves that have weaned with an average weaning ratio of 104.

## **Pathfinder Program**

The Angus Pathfinder program identifies cows that have excelled in production based on AHIR records of performance. To qualify for the report, a cow must have produced a calf measured through AHIR® in the past 18 months.

In addition, bulls that have sired a minimum of five or more Pathfinder Cows are listed as Pathfinder Sires in this report.

The program identifies Pathfinder Cows in herds actively involved in AHIR. First, the female must produce her first calf near the herd's average age for first calving. More specifically, the maximum age accepted for first calving of a Pathfinder Cow is the within-herd average for first calving plus 30 days. The within-herd average is determined separately for each herd on AHIR.

As second criteria, the Pathfinder Cow must maintain a regular calving interval. The maximum calving interval is:  
365 Days + (30 Days/Number of Calving Intervals)

Next, the Pathfinder Cow must produce at least three calves with an average weaning weight ratio of 105 to qualify for the report. A minimum of 10 herd mates or contemporaries must be evaluated together each year to determine the weight ratio. To continue to qualify each consecutive year, the cow must produce regularly and wean a calf that helps maintain the average weaning ratio of 105 or above. It is pointed out that once a cow is designated Pathfinder, she is always a Pathfinder, even though she might not qualify for listing each year.

A Pathfinder Cow, or Bull, is identified by the # symbol in front of their name.



Dear Valued Customers,

Welcome back to the 16th Annual HD Dunn & Son Angus Ranch Bull Sale. This year has proven to be a great year. The higher than usual precipitation gave us plenty of lush grass and irrigation water. This set of bulls has out-performed our expectations.

This year's lineup has many half-brothers and sisters out of some outstanding sires. We are offering bulls and females this year that will perform in high elevations and harsh climates. They will convert on high roughage diets and should produce calves that do the same. With the market at an all-time high, it is the perfect time to invest in bulls and females that will increase your herd's performance. Our genetics will increase your bottom line. Your cows will produce calves that will have explosive growth and convert in the feedyard.

Looking forward to seeing new and old faces at this November sale. If you have any questions or would like to see the bulls prior to the sale, please contact me at 307-380-6021.

Sincerely,  
C.L. Simper



**C.L. Simper**

## **RATIOS**

Ratios are used to compare the performance of one animal to another. They are useful because they indicate how an individual compares to all of the others in the group measured.

Ratios are a percentage calculated by dividing the individual's measure, by the average of the group's measure. For example, if bull A's weaning weight is 700 lbs., and the average of the group measured (contemporary group) is 675 lbs., bull A's weaning ratio would be 104 (700 divided by 675 multiplied by 100). It is customary to round the result, so instead of 103.7 we would say 104.

The ratio for an animal that is average in a trait is 100. This is illustrated as follows; bull B's weaning weight is 675, and the average of the contemporary group is 675, his ratio is calculated by dividing his weaning weight of 675 by the contemporary average of 675 multiplied by 100. This equals a ratio of 100.

## **CONTEMPORARY GROUPS**

When calculating ratios, there are two things one must first decide: what is to be measured, and what group do you want to compare. Deciding what to measure is simple. We measure all performance aspects of our animals: birth weight, weaning

weight, yearling weight, ultrasound carcass measures, PAP, etc. What's more of an issue is what groups do you compare. Establishing accurate contemporary groups is extremely important in measuring genetic variation. Contemporary groups are the cornerstone of genetic evaluation.

A contemporary group is a set of animals that have had an equal opportunity to perform: same sex, managed alike, and exposed to the same environmental conditions and feed resources. Contemporary grouping allows animals to be evaluated on how well they performed compared with their herdmates raised under similar environmental conditions.

Accurate contemporary groups require the breeder to ensure all animals in the group have been managed in the same manner.

We also believe in large contemporary groups. It is much more difficult to excel when competing in a large group than a small one, yet many breeders divide their herd into dozens of small groups. Our bulls are compared in two contemporary groups. One for bull calves out of cows, and one for bull calves out of heifers. We do the same for heifer calves.

We take contemporary grouping seriously, and you can be certain if a bull has excelled here it is because he earned the distinction.



3240 North 3000 West  
Tetonia, Idaho 83452  
(208) 221-3866



**Ken Dunn**

Dear Friends,

Welcome to our 16th annual bull sale.

Our region experienced record rainfall this summer, and I hope it was timely for you and your operation. In addition to record moisture, we have seen record-breaking cattle prices, and I hope you have been able to capitalize on the strong markets.

In last year's sale, we set a record. Over 90% of the bull buyers had purchased another bull from us in the past 5 years. I thank each of you for your continued support and belief in our program and expect the bulls from this year's sale will continue to meet your demanding needs.

While we are offering a couple of new bloodlines in this year's sale, they continue to follow the foundation of our breeding philosophy, which remains breeding cattle that can withstand the rigors of a harsh environment, calve unassisted, breed back and milk on limited feed, and have outstanding udder quality, foot and leg structure, and moderate mature size.

The bulls in this year's sale are, without a doubt, the strongest set of bulls we have ever offered. One thing you may notice is the increased number of SimAngus bulls. After going back and forth as to whether we would continue this breeding program, we have now fully committed to offering a strong selection of SimAngus bulls. From now on, you can count on our having a good selection of these half-blood bulls.

I hope you will make time to join us for our sale. I think you will find our cattle well worth your time to evaluate and a meal second to none.

The bulls will be in their sale pens on Tuesday, Wednesday and Thursday before the sale on Friday. If the weather looks threatening, or if it would just be more convenient to visit us prior to sale day, please feel free to drop by and make your selections early. We can arrange for your bids to be made sale day and guarantee satisfaction with all orders.

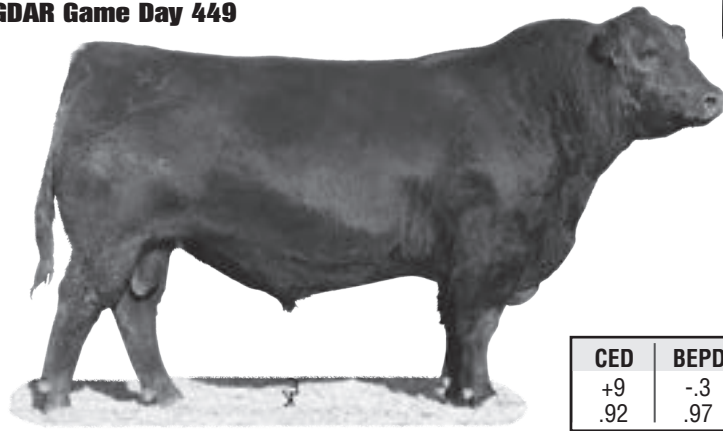
Please call any time if you would like to visit about the bulls or our operation.

Kind regards,

Ken Dunn

# HD Reference Sires

## GDAR Game Day 449



## Reference Sire **A** GDAR GAME DAY 449

Birth Date: 2-9-2004 Bull #14691231 Tattoo: 449

#AAR New Trend #VDAR Shoshone 548  
 Donna AAR74  
**Boyd New Day 8005**  
 #13050780 SVF Forever Lady 57D #+Leachman Right Time  
 +SVF Forever Lady 1128

#Tehama Band 207 #Band 116 of Ideal 2118 7174  
**GDAR Miss Wix 474**  
 #12190986 GDAR Miss Wix 749 Tehama Entella H501  
 #Traveler 1148 GDAR  
 LT Miss Wix 2221 GDAR

SIRE	EPD	ACC
CED	+8	.92
BEPD	+2.4	.98
WEPD	+53	.97
YEPD	+100	.95
MILK	+24	.95
DAM	EPD	ACC
CED	+5	.48
BEPD	+1.5	.72
WEPD	+32	.63
YEPD	+56	.62
MILK	+29	.58

CED	BEPD	WEPD	YEPD	RADG	YH	SC	MILK	MARB	RE
+9	-.3	+51	+95	+1.14	-.3	+69	+26	+49	+98
.92	.97	.95	.94	.72	.93	.94	.87	.68	.67

\$EN	\$W	\$F	\$G	\$B
+22.69	+68.64	+40.98	+31.95	+57.76

Game Day cattle work very well in our environment. The bulls perform well, and the cows are fertile, easy fleshing, and moderate sized with good udders. We will calve over 50 daughters this spring and will be adding more to our herd as time goes on. Game Day adds thickness in a moderate, mature frame. Game Day ranks in the top 1% of the Angus breed for \$W and HP, top 3% for RE and top 5% for \$EN.

## Sinclair Mountain Pass 4P138



## Reference Sire **B** SINCLAIR MOUNTAIN PASS 4P138

Birth Date: 4-18-2004 Bull 15081884 Tattoo: 4P138

#Gardens Prime Time #RR Traveler 5204  
**N Bar Prime Time D806**  
 #12557724 N Bar Miss Emulous A404 N Green Garden Susie 1246 S1  
 N Bar Emulation Ext Z52  
 #N Bar Miss Emulous X3091

+OCC Exodus 712E #OCC Bonanza 880B  
**N Bar Kinochtry Beauty V1490**  
 13774485 #N Bar Kinochtry Beauty 4317 Dixie Erica of CH 1019  
 #Leachman Bold Driver  
 N Bar Kinochtry Beauty 2414

SIRE	EPD	ACC
CED	+14	.90
BEPD	-1.7	.95
WEPD	+28	.93
YEPD	+57	.91
MILK	+18	.89
DAM	EPD	ACC
CED	-5	.32
BEPD	+2.3	.41
WEPD	+36	.36
YEPD	+66	.35
MILK	+21	.36

CED	BEPD	WEPD	YEPD	RADG	YH	SC	MILK	MARB	RE
-1	+1.5	+46	+88	+1.14	-.1	+1.07	+24	+76	+09
.61	.77	.67	.63	.28	.30	.50	.34	.35	.33

\$EN	\$W	\$F	\$G	\$B
+7.24	+42.63	+34.36	+17.05	+65.73

Mountain Pass is proving to be one of the better bulls we have ever introduced into our program. I discovered Mountain Pass when delivering bulls to Jon Gabel at Culver Cattle Company. I found him to be an exceptional individual and after looking at hundreds of his daughters, it was clear the bull had a lot to offer. Mountain Pass is a low PAP bull, and his daughters are moderate, sound, easy-fleshing and good uddered. From a pedigree standpoint, Mountain Pass fits well into our program. His second dam, 4317, is the mother of our Explosion V1495 bull, and the dam of his mother's sire is Dixie Erica of CH 1019, the mother of Great Plains. We used Mountain Pass heavily again this spring.

## Cole Creek Black Cedar 46P



## Reference Sire **C** COLE CREEK BLACK CEDAR 46P

Birth Date: 2-16-2003 Bull 14496765 Tattoo: 46P

#CH Quantum 3330 #GDAR Quantum 1245  
**CH Quantum 6247**  
 #12687606 CH Blackbird 0136 #Dixie Erica of CH 6180  
 GDAR Traveler 584 LT  
 CH Blackbird 5028

#AAR Windy Ridge 523 #Windy Ridge Commodore  
**Cole Creek Clova Juanada 67**  
 12872634 Cole Creek Clova Juanada 811 AAR Blackcap Kay 1871  
 Cole Creek Gold Bar 97V  
 #Cole Creek Clova Juanada 51W

SIRE	EPD	ACC
CED	+13	.75
BEPD	-1.9	.85
WEPD	+29	.81
YEPD	+53	.68
MILK	+19	.70
DAM	EPD	ACC
CED	+9	.37
BEPD	+1.5	.49
WEPD	+32	.40
YEPD	+60	.38
MILK	+13	.39

CED	BEPD	WEPD	YEPD	RADG	YH	SC	MILK	MARB	RE
+8	+2.4	+50	+89	+0.7	+3	+1.22	+22	+58	+73
.80	.93	.89	.85	.66	.59	.81	.75	.40	.37

\$EN	\$W	\$F	\$G	\$B
+6.53	+40.50	+33.65	+32.68	+82.61

Black Cedar was introduced into our program to perpetuate the influence of Cedar Hills Angus, the foundation of our herd, and to add some of Greg Golden's influence as well. Black Cedar's grandsire, CH Quantum 3330, was one of the best sons of our foundation female, Dixie Erica of CH 6180, and his maternal grandsire was the great GDAR Traveler 584 LT. Some of our best females trace back to 584 LT. Black Cedar cattle perform well and excel in RE and \$W EPDs.

# HD Reference Sires

## Sitz Upward 307R



**D SITZ UPWARD 307R** [AMF-CAF-DDF-M1F-NHF]  
 Birth Date: 3-12-2005 Bull #14963730 Tattoo: 307R

#Connealy Lead On #Connealy Leadtime  
 Eligence Plus of Conanga  
**Connealy Onward**  
 #14216491 Altune of Conanga 6104 #GAR Traveler 1489  
 Avalon 1418 of Conanga 6276

#Sitz Value 7097 #Sitz Traveler 6802  
**Sitz Henrietta Pride 81M**  
 14087650 Sitz Henrietta Pride 1370 #Sitz Eisa Evergreen 791  
 #+OCC Great Plains 943G  
 Sitz Henrietta Pride 2155

SIRE	EPD	ACC
CED	+12	.85
BEPD	+2.0	.95
WEPD	+58	.92
YEPD	+114	.90
MILK	+27	.89
DAM	EPD	ACC
CED	+2	.54
BEPD	+2.3	.66
WEPD	+53	.59
YEPD	+99	.55
MILK	+28	.56

CED	BEPD	WEPD	YEPD	RADG	YH	SC	MILK	MARB	RE
+5	+2.5	+71	+132	+.19	+.8	+1.64	+40	+.44	+.75
.92	.98	.97	.96	.86	.96	.96	.93	.71	.71

\$EN	\$W	\$F	\$G	\$B
-20.24	+62.72	+82.27	+21.83	+105.04

We have used Upward over the past few years to add performance and frame size to some of our under-performing cows. Generally, we have found Upward cattle to be too large framed and high milking for our program. But, used selectively, we have found Upward to work very well and have had some very good cattle produced from these matings. Upward ranks in the top of the Angus breed for WW, YW, Milk, CW, \$W, \$F and \$B.

## Ellingson Legacy M229 "Olie"



**E ELLINGSON LEGACY M229**  
 Birth Date: 1/28/2002 Bull 2171761 Tattoo: M229

NICHOLS BLK DESTINY D12 CIRCLE S LEACHMAN 600U  
 NICHOLS LEGACY G151 NICHOLS KELLY 75U  
 1937373 NICHOLS DEBRA D81 BURNS BULL X339U  
 NICHOLS KELLY B81

LRS PREFERRED STOCK 370C CIRCLE S LEACHMAN 600U  
 ELLINGSON MS PSTOCK K58 LAS MISS PRINCESS 020Z  
 2085283 ELLINGSON BL CLOUD D458 KS BLACK CLOUD A27  
 ELLINGSON POLLFLECK 204

SIRE	EPD
CED	10.5
BEPD	-0.3
WEPD	57.5
YEPD	77.9
MILK	24.2
DAM	EPD
CED	7.6
BEPD	5.0
WEPD	71.8
YEPD	111.9
MILK	17.5

CED	BEPD	WEPD	YEPD	MILK	MARB	RE	API	TI
17.6	-0.6	59.1	92.1	24.1	0.24	1.24	143.6	73.2

After dabbling with SimAngus cattle for over 10 years, we have now embarked on a plan to consistently offer a good selection of SimAngus cattle in our bull sales. We have dedicated a subset of our herd to this program and are dedicated to offering some of the best SimAngus genetics you will find. This year, we are featuring six direct sons of the legendary Olie. Ellingson Legacy M229, known by the nickname "Olie" is one of the most complete Simmental bulls we have used. He offers exceptionally low birth weight and very good growth. The half-blood daughters we have kept, look outstanding. Direct Olie sons are hard to find, and we think you will find it worth your time to evaluate ours.





# 1 HD Dunn Mountain Pass 3260

Birth Date: 4-25-2013 Bull 17638237 Tattoo: 3260

#N Bar Prime Time D806

#Gardens Prime Time

Sinclair Mountain Pass 4P138

N Bar Miss Emulous A404

15081884 N Bar Kinochtry Beauty V1490

+OCC Exodus 712E

#N Bar Kinochtry Beauty 4317

#OCC Missing Link 830M

OCC Headliner 661H

HD Dunn Blackcap Effie 8008

+OCC Dixie Erica 946K

#16269896 HD Dunn Blackcap Effie 6115

#TC Freedom 104

HD Dunn Blackcap Effie 2051

SIRE	EPD
CED	-1
BEPD	+1.5
WEPD	+46
YEPD	+88
MILK	+24
DAM	EPD
CED	+5
BEPD	+1.6
WEPD	+49
YEPD	+78
MILK	+25

CED	BEPD	WEPD	YEPD	MILK	Actual BW	205 Ratio	365 Ratio	PAP SCORE	Actual Scrotal
+2	+1.7	+45	+80	+25	84	100	99	41	37
MARB	RE	\$EN	\$W	\$F	\$G	\$B	Dam Production		
+0.37	+0.49	-0.59	+34.80	+24.69	+20.38	+65.51	4-107		



HD Dunn Mountain Pass 3260 - Lot 1

# 2 HD Dunn Mountain Pass 3003

Birth Date: 2-28-2013 Bull 17638206 Tattoo: 3003

#N Bar Prime Time D806

#Gardens Prime Time

Sinclair Mountain Pass 4P138

N Bar Miss Emulous A404

15081884 N Bar Kinochtry Beauty V1490

+OCC Exodus 712E

#N Bar Kinochtry Beauty 4317

#+GDAR Game Day 449 (RF)

#+Boyd New Day 8005

HD Dunn Frances 1201

#GDAR Miss Wix 474

17094715 HD Dunn Frances 1154

Leachman Good News

Shoshone Frances 6382

SIRE	EPD
CED	-1
BEPD	+1.5
WEPD	+46
YEPD	+88
MILK	+24
DAM	EPD
CED	+6
BEPD	+1
WEPD	+42
YEPD	+69
MILK	+23

CED	BEPD	WEPD	YEPD	MILK	Actual BW	205 Ratio	365 Ratio	PAP SCORE	Actual Scrotal
+2	+1.4	+44	+76	+23	78	101	97	40	37
MARB	RE	\$EN	\$W	\$F	\$G	\$B	Dam Production		
+0.47	+0.19	+3.70	+35.48	+20.22	+21.41	+54.07	1-101		



HD Dunn Mountain Pass 3003 - Lot 2

# 3 HD Dunn Game Day 3207

Birth Date: 4-22-2013 Bull 17638587 Tattoo: 3207

#+Boyd New Day 8005

#AAR New Trend

GDAR Game Day 449 (RF)

SVF Forever Lady 57D

#+14691231 #GDAR Miss Wix 474

#Tehama Band 207

GDAR Miss Wix 749

Sitz Rainmaker 8276

#Sitz Rainmaker 6169

HD Dunn Dixie Erica 0445

#Sitz Erica Everelda 3172

17035455 HD Dunn Dixie Erica 4188

#Hyline Right Time 338

+HD Dunn Dixie Erica 1214

SIRE	EPD
CED	+9
BEPD	-3
WEPD	+51
YEPD	+95
MILK	+26
DAM	EPD
CED	+4
BEPD	+2.5
WEPD	+48
YEPD	+87
MILK	+24

CED	BEPD	WEPD	YEPD	MILK	Actual BW	205 Ratio	365 Ratio	PAP SCORE	Actual Scrotal
+5	+1.7	+51	+92	+25	84	105	103	41	38.5
MARB	RE	\$EN	\$W	\$F	\$G	\$B	Dam Production		
+0.55	+0.59	-5.28	+36.35	+37.04	+30.41	+69.16	2-103		

Lot 3 was used to breed a group of our cows.



HD Dunn Game Day 3207 - Lot 3

# 4 HD Dunn Bextor 3067

Birth Date: 3-23-2013 Bull 17715196 Tattoo: 3067

#CRA Bextor 872 5205 608

#BAR Ext Traveler 205

HD Dunn Bextor 1266

Cra Lady Jaye 608 498 S Easy

17092794 #HD Dunn Lass 6180

#+Boyd New Day 8005

HD Dunn Lass 3439

#+GDAR Game Day 449 (RF)

#+Boyd New Day 8005

HD Dunn Blackbird 1295

#GDAR Miss Wix 474

17094665 HD Dunn Blackbird 8178

#+BT Right Time 24J

HD Dunn Blackbird 6384

SIRE	EPD
CED	+7
BEPD	+1.1
WEPD	+65
YEPD	+112
MILK	+25
DAM	EPD
CED	+11
BEPD	-1.1
WEPD	+44
YEPD	+78
MILK	+21

CED	BEPD	WEPD	YEPD	MILK	Actual BW	205 Ratio	365 Ratio	PAP SCORE	Actual Scrotal
+9	-1	+54	+96	+23	71	101	105	42	35
MARB	RE	\$EN	\$W	\$F	\$G	\$B	Dam Production		
+0.52	+0.49	-8.86	+35.09	+40.77	+33.77	+65.15	1-101		

Lot 4 was used to breed a group of our heifers.



HD Dunn Bextor 3067 - Lot 4



**Sha Upward 022 - Lot 5**

**5 SBA UPWARD 022**  
 Birth Date: 4-18-2013 Bull 17655850 Tattoo: 022  
 #Connealy Onward #Connealy Lead On  
**Sitz Upward 307R** Altune of Conanga 6104  
 #14963730 Sitz Henrietta Pride 81M #Sitz Value 7097  
 Sitz Henrietta Pride 1370  
 #Mytty In Focus (RF) #SAF Focus of ER  
**Heritage Katinka 0501** Mytty Countess 906  
 #16715192 +Heritage 811 Katinka 8036 #BC Marathon 7022  
 +WA Katinka 811

CED	BEPD	WEPD	YEPD	MILK	Actual BW	205 Ratio	365 Ratio	PAP SCORE	Actual Scrotal
+5	+2.6	+60	+110	+30	82	102	107	45	38
MARB	RE	\$EN	\$W	\$F	\$G	\$B	Dam Production		
+4.5	+65	-20.17	+36.28	+56.62	+27.59	+100.70	2-97		

SIRE	EPD
CED	+5
BEPD	+2.5
WEPD	+71
YEPD	+132
MILK	+40
DAM	EPD
CED	+8
BEPD	+1.2
WEPD	+48
YEPD	+84
MILK	+19



**HD Dunn Game Day 3295 - Lot 6**

**6 HD DUNN GAME DAY 3295**  
 Birth Date: 4-28-2013 Bull 17638620 Tattoo: 3295  
 #+Boyd New Day 8005 #AAR New Trend  
**GDAR Game Day 449 (RF)** SVF Forever Lady 57D  
 #+14691231 #GDAR Miss Wix 474 #Tehama Band 207  
 GDAR Miss Wix 749  
 #Hyline Right Time 338 #+Leachman Right Time  
**HD Dunn Dixie Erica 5109** Hyline Pride 265  
 #15183193 Dixie Erica of CH 0019 Papa Mega Power 8805  
 #Dixie Erica of CH 916

CED	BEPD	WEPD	YEPD	MILK	Actual BW	205 Ratio	365 Ratio	PAP SCORE	Actual Scrotal
-11	+3.8	+42	+76	+20	97	108	105	42	42
MARB	RE	\$EN	\$W	\$F	\$G	\$B	Dam Production		
+17	+45	+15.34	+33.83	+21.17	+17.40	+47.39	6-106		

SIRE	EPD
CED	+9
BEPD	-.3
WEPD	+51
YEPD	+95
MILK	+26
DAM	EPD
CED	-9
BEPD	+3.5
WEPD	+41
YEPD	+68
MILK	+20



**HD Dunn Bextor 3131 - Lot 7**

**7 HD DUNN BEXTOR 3131**  
 Birth Date: 4-16-2013 Bull 17715217 Tattoo: 3131  
 #CRA Bextor 872 5205 608 #BAR Ext Traveler 205  
**HD Dunn Bextor 1266** Cra Lady Jaye 608 498 S Easy  
 17092794 #HD Dunn Lass 6180 #+Boyd New Day 8005  
 HD Dunn Lass 3439  
 #+GDAR Game Day 449 (RF) #+Boyd New Day 8005  
**HD Dunn Zara 1282** #GDAR Miss Wix 474  
 17094666 HD Dunn Zara 8050 #OCC Missing Link 830M  
 HD Dunn Zara 6490

CED	BEPD	WEPD	YEPD	MILK	Actual BW	205 Ratio	365 Ratio	PAP SCORE	Actual Scrotal
+10	-1.2	+63	+108	+26	64	115	115	36	35
MARB	RE	\$EN	\$W	\$F	\$G	\$B	Dam Production		
+35	+81	-17.95	+41.27	+52.25	+28.97	+72.94	1-115		

SIRE	EPD
CED	+7
BEPD	+1.1
WEPD	+65
YEPD	+112
MILK	+25
DAM	EPD
CED	+9
BEPD	-1.1
WEPD	+53
YEPD	+90
MILK	+28

Lot 7 was used to breed a group of our heifers.



**HD Dunn in Focus 3306 - Lot 8**

**8 HD DUNN IN FOCUS 3306**  
 Birth Date: 4-29-2013 Bull 17638241 Tattoo: 3306  
 #SAF Focus of ER #SAF Fame  
**Mytty In Focus (RF)** GDAR Forever Lady 246  
 #13880818 Mytty Countess 906 #Sitz Alliance 6595  
 Baldrige Countess 357  
 #+BT Right Time 24J #+Leachman Right Time  
**HD Dunn Right Time 8357** Sitz Everelda Entense 1905  
 #16273183 HD Dunn Merle 2479 +HD Dunn Tetonia 0062  
 HD Dunn Merle 9599

CED	BEPD	WEPD	YEPD	MILK	Actual BW	205 Ratio	365 Ratio	PAP SCORE	Actual Scrotal
+5	+1.5	+55	+94	+25	81	110	107	56	40
MARB	RE	\$EN	\$W	\$F	\$G	\$B	Dam Production		
+50	+09	-4.21	+42.00	+37.63	+26.48	+66.34	4-107		

SIRE	EPD
CED	+12
BEPD	-1.2
WEPD	+54
YEPD	+95
MILK	+25
DAM	EPD
CED	-9
BEPD	+6.7
WEPD	+48
YEPD	+82
MILK	+25

Lot 8 was used to breed a group of our cows.



**Sarah, Walker and Ken Dunn**



**HD Dunn 6i6 Rito 3310 - Lot 11**

**9 HD DUNN IN FOCUS 3052**  
 Birth Date: 3-17-2013 Bull 17638222 Tattoo: 3052  
 #Mytty In Focus (POT) #SAF Focus of ER  
**HD Dunn in Focus 1119** Mytty Countess 906  
 17094629 HD Dunn Susanna 7498 GDAR Future Direction 3426  
 #HD Dunn Susanna 4108  
 #Hyline Right Time 338 #+Leachman Right Time  
**HD Dunn Dixie Erica 4188** Hyline Pride 265  
 14851038 +HD Dunn Dixie Erica 1214 N Bar Explosion V1495  
 #Dixie Erica of CH 6180

SIRE	EPD
CE	+10
BE	-8
WE	+46
YE	+83
MILK	+27
DAM	EPD
CE	-1
BE	+3.9
WE	+48
YE	+81
MILK	+22

**11 HD DUNN 6i6 RITO 3310**  
 Birth Date: 4-30-2013 Bull 17638510 Tattoo: 3310  
 #DHD Traveler 6807 #QAS Traveler 23-4  
**Rito 6i6 of 4B20 6807** #Bemindful Maid DHD 0807  
 #12530601 +Rita 4B20 of 0FB1 Bando #Tehama Bando 155  
 +Rita 0FB1 of 5H11 Fullback  
 #Bon View New Design 878 #B/R New Design 036  
**HD Dunn Dixie Erica 4264** Bon View Gammer 85  
 #14851055 +HD Dunn Dixie Erica 7406 #+HBR Omaha Clint  
 #Dixie Erica of CH 6180

SIRE	EPD
CE	+10
BE	-4
WE	+39
YE	+17
MILK	+17
DAM	EPD
CE	-1
BE	+3.8
WE	+41
YE	+76
MILK	+28

CE	BE	WE	YE	MILK	Actual BW	205 Ratio	365 Ratio	PAP SCORE	Actual Scrotal
I+5	I+1.6	I+47	I+82	I+25	83	100	100	42	39.5
MARB	RE	\$EN	\$W	\$F	\$G	\$B	Dam Production		
I+.48	I+.22	-5.44	+32.24	+26.22	+26.93	+74.45	6-105		

CE	BE	WE	YE	MILK	Actual BW	205 Ratio	365 Ratio	PAP SCORE	Actual Scrotal
+1	+3.1	+42	+84	+23	97	106	112	51	39.5
MARB	RE	\$EN	\$W	\$F	\$G	\$B	Dam Production		
+.50	+.03	-3.04	+22.24	+31.21	+28.33	+78.00	8-107		



**Sba Pioneer 020 - Lot 10**

**12 HD DUNN HYLINE RITO 3366**  
 Birth Date: 5-15-2013 Bull 17638248 Tattoo: 3366  
 Hyline Rito 478 Hyline Rito 498  
**Hyline Rito 18** Hyline Miss Kemm 875  
 16254930 Hyline Diamond Lil 303 #Hyline Right Time 338  
 Hyline Diamond Lil 447  
 #RC Black Cigar 0293 #Connealy Frontline  
**HD Dunn Erica 7029** Rev Rose of CH 8091  
 #15942648 HD Dunn Explosion 5551 +HD Dunn Explosion 1230  
 #CH Erica 4323

SIRE	EPD
CE	-2
BE	+4.4
WE	+52
YE	+101
MILK	+14
DAM	EPD
CE	+2
BE	+2.0
WE	+42
YE	+78
MILK	+25

CE	BE	WE	YE	MILK	Actual BW	205 Ratio	365 Ratio	PAP SCORE	Actual Scrotal
-3	+4.4	+50	+94	+20	97	110	110	42	40
MARB	RE	\$EN	\$W	\$F	\$G	\$B	Dam Production		
+.25	+.09	-1.83	+23.26	+40.18	+18.12	+53.24	5-107		

**10 SBA PIONEER 020**  
 Birth Date: 3-13-2013 Bull 17655848 Tattoo: 020  
 #SAV Final Answer 0035 (POT) #Sitz Traveler 8180  
**SAV Pioneer 7301** SAV Emulous 8145  
 15688392 SAV Blackbird 5297 #+Boyd New Day 8005  
 SAV Blackbird 1082  
 #+OCC Great Plains 943G #N Bar Emulation EXT  
**SBA Merle 101** Dixie Erica of CH 1019  
 17113975 HD Dunn Merle 9416 Sitz Rainmaker 8276  
 HD Dunn Merle 5344

SIRE	EPD
CE	+3
BE	+2.0
WE	+61
YE	+110
MILK	+32
DAM	EPD
CE	+6
BE	+8
WE	+46
YE	+82
MILK	+24

CE	BE	WE	YE	MILK	Actual BW	205 Ratio	365 Ratio	PAP SCORE	Actual Scrotal
+2	+2.8	+56	+102	+28	84	110	112	34	36.5
MARB	RE	\$EN	\$W	\$F	\$G	\$B	Dam Production		
+.38	+.76	-14.44	+34.25	+47.76	+26.83	+82.85	1-110		



# 13 HD DUNN RITO 3387

Birth Date: 5-17-2013 Bull 17638252 Tattoo: 3387  
 Hyline Rito 478 Hyline Rito 498  
 Hyline Rito 18 Hyline Miss Kemm 875  
 16254930 Hyline Diamond Lil 303 #Hyline Right Time 338  
 Hyline Diamond Lil 447

#SAV 8180 Traveler 004 (RCF)  
 HD Dunn Blackbird 6129  
 15633482 HD Dunn Blackbird 6267

#Sitz Traveler 8180  
 +Boyd Forever Lady 8003  
 #GDAR Quantum 1245  
 CH Blackbird 019

SIRE	EPD
CED	-2
BEPD	+4.4
WEPD	+52
YEPD	+101
MILK	+14
DAM	EPD
CED	+5
BEPD	+2.4
WEPD	+45
YEPD	+79
MILK	+20

CED	BEPD	WEPD	YEPD	MILK	Actual BW	205 Ratio	365 Ratio	PAP SCORE	Actual Scrotal
+2	+3.2	+54	+96	+17	88	114	109	45	36.5
MARB	RE	\$EN	\$W	\$F	\$G	\$B	Dam Production		
+1.6	+1.0	+1.24	+28.76	+40.77	+12.68	+58.60	4-104		



HD Dunn Rito 3387 - Lot 13

# 14 HD DUNN BLACK CEDAR 3144

Birth Date: 4-17-2013 Bull 17641892 Tattoo: 3144  
 #CH Quantum 6247 #CH Quantum 3330  
 Cole Creek Black Cedar 46P CH Blackbird 0136  
 14496765 Cole Creek Clova Juanada 67 #AAR Windy Ridge 523  
 Cole Creek Clova Juanada 811

+Sinclair Network 1U7  
 HD Dunn Merle 6532  
 #15657505 HD Dunn Merle 8177

#Papa Universe 515  
 Papa Envious Blackbird 8832  
 Sitz Traveler 7594  
 CH Merle 4302

SIRE	EPD
CED	+8
BEPD	+2.4
WEPD	+50
YEPD	+89
MILK	+22
DAM	EPD
CED	-3
BEPD	+5.3
WEPD	+41
YEPD	+64
MILK	+21

CED	BEPD	WEPD	YEPD	MILK	Actual BW	205 Ratio	365 Ratio	PAP SCORE	Actual Scrotal
+2	+4.4	+48	+81	+22	92	108	107	44	39
MARB	RE	\$EN	\$W	\$F	\$G	\$B	Dam Production		
+3.3	+5.9	+2.81	+29.16	+24.48	+27.67	+66.98	6-105		



HD Dunn Black Cedar 3144 - Lot 14

# 15 HD DUNN BLACK CEDAR 3234

Birth Date: 4-23-2013 Bull 17641897 Tattoo: 3234  
 #CH Quantum 6247 #CH Quantum 3330  
 Cole Creek Black Cedar 46P CH Blackbird 0136  
 14496765 Cole Creek Clova Juanada 67 #AAR Windy Ridge 523  
 Cole Creek Clova Juanada 811

Cole Creek Directive 18P  
 HD Dunn Blackbird 6570  
 #15632955 HD Dunn Blackbird 3062

#CA Future Direction 5321  
 Cole Creek Clovanada 136M  
 #+OCC Great Plains 943G  
 HD Dunn Blackbird 1274

SIRE	EPD
CED	+8
BEPD	+2.4
WEPD	+50
YEPD	+89
MILK	+22
DAM	EPD
CED	-3
BEPD	+3.8
WEPD	+44
YEPD	+79
MILK	+29

CED	BEPD	WEPD	YEPD	MILK	Actual BW	205 Ratio	365 Ratio	PAP SCORE	Actual Scrotal
-1	+4.7	+48	+85	+26	100	108	105	61	36
MARB	RE	\$EN	\$W	\$F	\$G	\$B	Dam Production		
+5.8	+3.0	-3.80	+28.20	+29.52	+29.90	+71.71	6-107		



HD Dunn Black Cedar 3234 - Lot 15

# 16 HD DUNN BLACK CEDAR 3264

Birth Date: 4-25-2013 Bull 17641867 Tattoo: 3264  
 #CH Quantum 6247 #CH Quantum 3330  
 Cole Creek Black Cedar 46P CH Blackbird 0136  
 14496765 Cole Creek Clova Juanada 67 #AAR Windy Ridge 523  
 Cole Creek Clova Juanada 811

Hyline Right Time 745  
 HD Dunn Kate 9413  
 16492841 #HD Dunn Kate 3493

Hyline Right Time 891  
 R&R Pride Eileen 745  
 #+OCC Great Plains 943G  
 HD Dunn Kate 0618

SIRE	EPD
CED	+8
BEPD	+2.4
WEPD	+50
YEPD	+89
MILK	+22
DAM	EPD
CED	+5
BEPD	+2.2
WEPD	+40
YEPD	+67
MILK	+26

CED	BEPD	WEPD	YEPD	MILK	Actual BW	205 Ratio	365 Ratio	PAP SCORE	Actual Scrotal
+4	+3.4	+46	+79	+24	94	104	102	48	40
MARB	RE	\$EN	\$W	\$F	\$G	\$B	Dam Production		
+4.2	+6.4	+3.38	+30.69	+22.96	+30.25	+70.90	3-103		



C.L., Lexi, Carson and Rhoda Simper

# 17 HD DUNN IN Focus 3314

Birth Date: 4-30-2013 Bull 17672462 Tattoo: 3314

#SAF Focus of ER

#SAF Fame

Mytty In Focus <sup>(PFI)</sup>

#13880818 Mytty Countess 906

GDAR Forever Lady 246

#Sitz Alliance 6595

Baldrige Countess 357

HD Dunn Freedom 5246

#TC Freedom 104

HD Dunn Merle 7526

HD Dunn Blackbird 1274

#15934905 HD Dunn Merle 8177

Sitz Traveler 7594

CH Merle 4302

SIRE EPD
CED +12
BEPD -1.2
WEPD +54
YEPD +95
MILK +25
DAM EPD
CED -5
BEPD +5.8
WEPD +44
YEPD +72
MILK +24

CED	BEPD	WEPD	YEPD	MILK	Actual BW	205 Ratio	365 Ratio	PAP SCORE	Actual Scrotal
+3	+2.2	+49	+84	+23	87	109	107	39	40
MARB	RE	\$EN	\$W	\$F	\$G	\$B	Dam Production		
+4.6	+2.6	+9.28	+44.32	+27.76	+26.69	+69.74	5-106		



HD Dunn in Focus 3314 - Lot 17

# 18 HD DUNN IN Focus 3248

Birth Date: 4-24-2013 Bull 17638235 Tattoo: 3248

#SAF Focus of ER

#SAF Fame

Mytty In Focus <sup>(PFI)</sup>

#13880818 Mytty Countess 906

GDAR Forever Lady 246

#Sitz Alliance 6595

Baldrige Countess 357

+Rito 3X39 of 2536 EXP

#+GAR Expectation 4915

HD Dunn Dixie Erica 7538

GAR Precision 2536

#15934907 HD Dunn Dixie Erica 3305

#BCC Bushwacker 41-93

HD Dunn Dixie Erica 8147

SIRE EPD
CED +12
BEPD -1.2
WEPD +54
YEPD +95
MILK +25
DAM EPD
CED -17
BEPD +9.6
WEPD +55
YEPD +92
MILK +25

CED	BEPD	WEPD	YEPD	MILK	Actual BW	205 Ratio	365 Ratio	PAP SCORE	Actual Scrotal
+3	+2.9	+52	+90	+25	81	100	99	38	41
MARB	RE	\$EN	\$W	\$F	\$G	\$B	Dam Production		
+4.9	+1.2	-6.77	+32.72	+33.94	+28.63	+71.88	5-106		



HD Dunn in Focus 3248 - Lot 18

# 19 HD DUNN IN Focus 3073

Birth Date: 3-25-2013 Bull 17715198 Tattoo: 3073

#Mytty In Focus <sup>(PFI)</sup>

#SAF Focus of ER

HD Dunn MYTTY in Focus 1030

Mytty Countess 906

17094513 HD Dunn Kate 9413

Hylina Right Time 745

#HD Dunn Kate 3493

+OCC Rising Sun 739R

OCC Jet Stream 825J

HD Dunn Erica Lassie 1005

+OCC Dixie Erica 805G

17092306 HD Dunn Erica Lassie 9135

#+Boyd New Day 8005

HD Dunn Erica Lassie 6200

SIRE EPD
CED +8
BEPD +1.3
WEPD +50
YEPD +90
MILK +25
DAM EPD
CED +7
BEPD +7
WEPD +42
YEPD +78
MILK +20

CED	BEPD	WEPD	YEPD	MILK	Actual BW	205 Ratio	365 Ratio	PAP SCORE	Actual Scrotal
+7	+1.4	+49	+88	+22	78	107	106	38	38.5
MARB	RE	\$EN	\$W	\$F	\$G	\$B	Dam Production		
+4.1	+3.1	-4.16	+31.15	+32.86	+26.76	+67.49	1-107		



HD Dunn in Focus 3073 - Lot 19

# 20 SBA GAME DAY 019

Birth Date: 3-13-2013 Bull 17655847 Tattoo: 019

#+Boyd New Day 8005

#AAR New Trend

GDAR Game Day 449 <sup>(PFI)</sup>

SVF Forever Lady 57D

#14691231 #GDAR Miss Wix 474

#Tehama Band 207

GDAR Miss Wix 749

+OCC Rising Sun 739R

OCC Jet Stream 825J

HD Dunn Susanna 1002

+OCC Dixie Erica 805G

17092304 HD Dunn Susanna 9133

#SAV 8180 Traveler 004 <sup>(PFI)</sup>

+HD Dunn Susanna 1198

SIRE EPD
CED +9
BEPD -3
WEPD +51
YEPD +95
MILK +26
DAM EPD
CED +5
BEPD +0
WEPD +42
YEPD +74
MILK +20

CED	BEPD	WEPD	YEPD	MILK	Actual BW	205 Ratio	365 Ratio	PAP SCORE	Actual Scrotal
+3	+1.8	+50	+86	+23	84	109	102	40	35.5
MARB	RE	\$EN	\$W	\$F	\$G	\$B	Dam Production		
+3.4	+7.0	-9.4	+36.13	+29.81	+25.77	+56.18	1-109		



Sba Game Day 019 - Lot 20



**HD Dunn Game Day 3272 - Lot 21**

## 21 HD DUNN GAME DAY 3272

Birth Date: 4-25-2013 Bull 17638608 Tattoo: 3272  
 #+Boyd New Day 8005 #AAR New Trend  
 GDAR Game Day 449<sup>RFI</sup> SVF Forever Lady 57D  
 #+14691231 #GDAR Miss Wix 474 #Tehama Band 207  
 GDAR Miss Wix 749  
 #RC Black Cigar 0293 #Connealy Frontline  
 HD Dunn Dixie Erica 7008 Rev Rose of CH 8091  
 15942638 #HD Dunn Dixie Erica 5109 #Hyline Right Time 338  
 Dixie Erica of CH 0019

SIRE	EPD
CED	+9
BEPD	-.3
WEPD	+51
YEPD	+95
MILK	+26
DAM	EPD
CED	-2
BEPD	+2.9
WEPD	+49
YEPD	+85
MILK	+21

CED	BEPD	WEPD	YEPD	MILK	Actual BW	205 Ratio	365 Ratio	PAP SCORE	Actual Scrotal
+5	+1.0	+57	+99	+24	87	111	109	42	37.5
MARB	RE	\$EN	\$W	\$F	\$G	\$B	Dam Production		
+28	+66	+1.68	+49.06	+43.21	+24.02	+59.57	4-104		

Lot 21 was used to breed a group of our cows.



**HD Dunn Game Day 3236 - Lot 22**

## 22 HD DUNN GAME DAY 3236

Birth Date: 4-23-2013 Bull 17638589 Tattoo: 3236  
 #+Boyd New Day 8005 #AAR New Trend  
 GDAR Game Day 449<sup>RFI</sup> SVF Forever Lady 57D  
 #+14691231 #GDAR Miss Wix 474 #Tehama Band 207  
 GDAR Miss Wix 749  
 #OCC Missing Link 830M OCC Headliner 661H  
 HD Dunn Blackcap Effie 0300 +OCC Dixie Erica 946K  
 16873676 #HD Dunn Blackcap Effie 6112 #Hyline Right Time 338  
 HD Dunn Blackcap Effie 3054

SIRE	EPD
CED	+9
BEPD	-.3
WEPD	+51
YEPD	+95
MILK	+26
DAM	EPD
CED	-1
BEPD	+3.3
WEPD	+54
YEPD	+92
MILK	+29

CED	BEPD	WEPD	YEPD	MILK	Actual BW	205 Ratio	365 Ratio	PAP SCORE	Actual Scrotal
+6	+6	+59	+103	+28	78	110	112	47	36
MARB	RE	\$EN	\$W	\$F	\$G	\$B	Dam Production		
+20	+86	-2.81	+53.54	+47.54	+17.61	+64.03	2-112		

Lot 22 was used to breed a group of our cows.



**HD Dunn Game Day 3319 - Lot 23**

## 23 HD DUNN GAME DAY 3319

Birth Date: 5-1-2013 Bull 17638631 Tattoo: 3319  
 #+Boyd New Day 8005 #AAR New Trend  
 GDAR Game Day 449<sup>RFI</sup> SVF Forever Lady 57D  
 #+14691231 #GDAR Miss Wix 474 #Tehama Band 207  
 GDAR Miss Wix 749  
 #+OCC Great Plains 943G #N Bar Emulation EXT  
 HD Dunn Blackcap Effie 3054 Dixie Erica of CH 1019  
 14499143 HD Dunn Blackcap Effie 1027 #Rockn D Ambush 1531  
 HD Dunn Blackcap Effie 9716

SIRE	EPD
CED	+9
BEPD	-.3
WEPD	+51
YEPD	+95
MILK	+26
DAM	EPD
CED	-14
BEPD	+5.4
WEPD	+41
YEPD	+66
MILK	+25

CED	BEPD	WEPD	YEPD	MILK	Actual BW	205 Ratio	365 Ratio	PAP SCORE	Actual Scrotal
-17	+5.2	+47	+81	+27	100	106	106	41	38
MARB	RE	\$EN	\$W	\$F	\$G	\$B	Dam Production		
+17	+85	+7.33	+38.47	+24.97	+20.51	+53.54	9-108		

Lot 23 was used to breed a group of our cows.



**HD Dunn Game Day 3297 - Lot 24**

## 24 HD DUNN GAME DAY 3297

Birth Date: 4-28-2013 Bull 17638638 Tattoo: 3297  
 #+Boyd New Day 8005 #AAR New Trend  
 GDAR Game Day 449<sup>RFI</sup> SVF Forever Lady 57D  
 #+14691231 #GDAR Miss Wix 474 #Tehama Band 207  
 GDAR Miss Wix 749  
 N Bar Explosion V1495 #N Bar Explosion  
 HD Dunn Merle 1314 #N Bar Kinochtry Beauty 4317  
 13925524 Merle of CH 021 Cole Creek Roller 110U  
 Merle of CH 5034

SIRE	EPD
CED	+9
BEPD	-.3
WEPD	+51
YEPD	+95
MILK	+26
DAM	EPD
CED	+4
BEPD	-.7
WEPD	+34
YEPD	+60
MILK	+17

CED	BEPD	WEPD	YEPD	MILK	Actual BW	205 Ratio	365 Ratio	PAP SCORE	Actual Scrotal
+7	-.6	+45	+81	+22	81	104	105	42	40
MARB	RE	\$EN	\$W	\$F	\$G	\$B	Dam Production		
+27	+39	+1.77	+35.36	+25.94	+20.33	+43.39	11-102		

Lot 24 was used to breed a group of our cows.

## 25 HD DUNN GAME DAY 3347

Birth Date: 5-12-2013 Bull 17715484 Tattoo: 3347

#+GDAR Game Day 449 (RF)  
**HD Dunn Game Day 1195**  
 17094718 HD Dunn Merle 0465

#+Boyd New Day 8005  
 #GDAR Miss Wix 474  
 JR Ambush 250F  
 CH Merle 4302

Sitz Rainmaker 8276  
**HD Dunn Susanna 9253**  
 16492794 +HD Dunn Susanna 0249

#Sitz Rainmaker 6169  
 #Sitz Erica Everelda 3172  
 #Rito 054 GDAR  
 #Susanna of CH 5060

SIRE EPD	
CED	+1
BEPD	+3.4
WEPD	+49
YEPD	+81
MILK	+20
DAM EPD	
CED	+6
BEPD	+2.0
WEPD	+29
YEPD	+66
MILK	+25

CED	BEPD	WEPD	YEPD	MILK	Actual BW	205 Ratio	365 Ratio	PAP SCORE	Actual Scrotal
+4	+2.5	+39	+73	+23	82	101	100	36	35.5
MARB	RE	\$EN	\$W	\$F	\$G	\$B	Dam Production		
+1.9	+6.0	+8.8	+24.60	+18.92	+21.82	+46.20	2-105		

## 28 HD DUNN MOUNTAIN PASS 3307

Birth Date: 4-29-2013 Bull 17638242 Tattoo: 3307

#N Bar Prime Time D806  
**Sinclair Mountain Pass 4P138**  
 15081884 N Bar Kinochtry Beauty V1490

#Gardens Prime Time  
 N Bar Miss Emulous A404  
 +OCC Exodus 712E  
 #N Bar Kinochtry Beauty 4317

Rito 8K4 of 5028 Rito 3X25  
**HD Dunn Blackbird 6569**  
 15632954 HD Dunn Blackbird 8101

#+Rito 3X25 of 5H11 EXT  
 #+Rita 5028 of 2T4 Ambush  
 N Bar Explosion V1495  
 HD Dunn Blackbird 6347

SIRE EPD	
CED	-1
BEPD	+1.5
WEPD	+46
YEPD	+88
MILK	+24
DAM EPD	
CED	-9
BEPD	+4.1
WEPD	+49
YEPD	+78
MILK	+22

CED	BEPD	WEPD	YEPD	MILK	Actual BW	205 Ratio	365 Ratio	PAP SCORE	Actual Scrotal
-12	+5.0	+53	+87	+23	95	111	107	39	38
MARB	RE	\$EN	\$W	\$F	\$G	\$B	Dam Production		
+4.6	+1.4	+8.26	+39.74	+29.60	+17.12	+57.93	5-104		

## 29 HD DUNN MOUNTAIN PASS 3316

Birth Date: 4-30-2013 Bull 17638243 Tattoo: 3316

#N Bar Prime Time D806  
**Sinclair Mountain Pass 4P138**  
 15081884 N Bar Kinochtry Beauty V1490

#Gardens Prime Time  
 N Bar Miss Emulous A404  
 +OCC Exodus 712E  
 #N Bar Kinochtry Beauty 4317

#+OCC Great Plains 943G  
**HD Dunn Forever Lady 4060**  
 14850998 HD Dunn Forever Lady 2462

#N Bar Emulation EXT  
 Dixie Erica of CH 1019  
 Rito 8K4 of 5028 Rito 3X25  
 CH Forever Lady 4476

SIRE EPD	
CED	-1
BEPD	+1.5
WEPD	+46
YEPD	+88
MILK	+24
DAM EPD	
CED	-5
BEPD	+4.0
WEPD	+45
YEPD	+82
MILK	+28

CED	BEPD	WEPD	YEPD	MILK	Actual BW	205 Ratio	365 Ratio	PAP SCORE	Actual Scrotal
-4	+2.6	+49	+90	+27	90	109	113	38	40.5
MARB	RE	\$EN	\$W	\$F	\$G	\$B	Dam Production		
+4.8	+3.7	+3.04	+43.51	+35.45	+21.00	+73.23	8-108		



HD Dunn Game Day 3402 - Lot 26

## 26 HD DUNN GAME DAY 3402

Birth Date: 5-21-2013 Bull 17715518 Tattoo: 3402

#+GDAR Game Day 449 (RF)  
**HD Dunn Game Day 1195**  
 17094718 HD Dunn Merle 0465

#+Boyd New Day 8005  
 #GDAR Miss Wix 474  
 JR Ambush 250F  
 CH Merle 4302

Hyline Right Time 745  
**HD Dunn Primrose 9447**  
 16492857 HD Dunn Primrose 1556

Hyline Right Time 891  
 R&R Pride Eileen 745  
 Sitz Ext 7277  
 TJH Primrose 4400

SIRE EPD	
CED	+1
BEPD	+3.4
WEPD	+49
YEPD	+81
MILK	+20
DAM EPD	
CED	+0
BEPD	+4.1
WEPD	+34
YEPD	+55
MILK	+26

CED	BEPD	WEPD	YEPD	MILK	Actual BW	205 Ratio	365 Ratio	PAP SCORE	Actual Scrotal
-1	+4.4	+43	+72	+23	95	105	104	36	37
MARB	RE	\$EN	\$W	\$F	\$G	\$B	Dam Production		
+2.5	+4.8	+1.30	+24.03	+15.83	+23.99	+46.59	3-104		



HD Dunn Mountain Pass 3275 - Lot 30

## 27 HD DUNN GAME DAY 3339

Birth Date: 5-10-2013 Bull 17770406 Tattoo: 3339

#+GDAR Game Day 449 (RF)  
**HD Dunn Game Day 1195**  
 17094718 HD Dunn Merle 0465

#+Boyd New Day 8005  
 #GDAR Miss Wix 474  
 JR Ambush 250F  
 CH Merle 4302

N Bar Explosion V1495  
**HD Dunn Rev Rose 2087**  
 14221895 HD Dunn Rev Rose 7344

#N Bar Explosion  
 #N Bar Kinochtry Beauty 4317  
 Leachman Good News  
 Rev Rose of CH 2133

SIRE EPD	
CED	+1
BEPD	+3.4
WEPD	+49
YEPD	+81
MILK	+20
DAM EPD	
CED	+3
BEPD	+4
WEPD	+34
YEPD	+66
MILK	+24

CED	BEPD	WEPD	YEPD	MILK	Actual BW	205 Ratio	365 Ratio	PAP SCORE	Actual Scrotal
I+2	I+1.9	I+42	I+74	I+22	62	110	108	34	35
MARB	RE	\$EN	\$W	\$F	\$G	\$B	Dam Production		
+2.2	+3.9	+1.73	+28.54	+18.72	+19.80	+42.57	8-102		

## 30 HD DUNN MOUNTAIN PASS 3275

Birth Date: 4-26-2013 Bull 17638238 Tattoo: 3275

#N Bar Prime Time D806  
**Sinclair Mountain Pass 4P138**  
 15081884 N Bar Kinochtry Beauty V1490

#Gardens Prime Time  
 N Bar Miss Emulous A404  
 +OCC Exodus 712E  
 #N Bar Kinochtry Beauty 4317

#+Boyd New Day 8005  
**HD Dunn Blackbird 6039**  
 15633474 HD Dunn Blackbird 4257

#AAR New Trend  
 SVF Forever Lady 57D  
 #+OCC Great Plains 943G  
 HD Dunn Blackbird 1007

SIRE EPD	
CED	-1
BEPD	+1.5
WEPD	+46
YEPD	+88
MILK	+24
DAM EPD	
CED	+7
BEPD	+1.3
WEPD	+51
YEPD	+86
MILK	+24

CED	BEPD	WEPD	YEPD	MILK	Actual BW	205 Ratio	365 Ratio	PAP SCORE	Actual Scrotal
+5	+8	+52	+95	+24	79	109	112	68	40.5
MARB	RE	\$EN	\$W	\$F	\$G	\$B	Dam Production		
+4.6	+1.3	-6.22	+36.24	+40.47	+18.82	+68.27	5-105		

Lot 30 was used to breed a group of our cows.







**HD Dunn Legacy 3196 - Lot 38**



**HD Dunn Legacy 3251 - Lot 40**

**38 HD DUNN LEGACY 3196**

Birth Date: 4/22/2013 Bull 2797307 Tattoo: A3196

NICHOLS LEGACY G151 NICHOLS BLK DESTINY D12  
 ELLINGSON LEGACY M229 NICHOLS DEBRA D81  
 2171761 ELLINGSON MS PSTOCK K58 LRS PREFERRED STOCK 370C  
 ELLINGSON BL CLOUD D458  
 HYLINE RIGHT TIME 338 LEACHMAN RIGHT TIME  
 HD DUNN DIXIE ERICA 6419 HYLINE PRIDE 265  
 2695144 HD DUNN DIXIE ERICA 9282 N BAR EXPLOSION V 1495  
 DIXIE ERICA OF C H 6123

SIRE EPD
CED 17.6
BEPD -0.6
WEPD 59.1
YEPD 92.1
MILK 24.1
DAM EPD
CED 8.9
BEPD -0.7
WEPD 51.8
YEPD 89.9
MILK 23.7

CED	BEPD	WEPD	YEPD	MILK	Actual BW	205 Ratio	365 Ratio	PAP SCORE	Actual Scrotal
13.5	-0.8	55.9	91.6	23.8	83	107	103	36	37.5

MARB	RE	API	TI	Dam Production
0.49	0.81	139.2	72	6-97

1/2 Angus 1/2 Simmental, Homozygous Polled and Homozygous Black.

**40 HD DUNN LEGACY 3251**

Birth Date: 4/24/2013 Bull 2797308 Tattoo: A3251

NICHOLS LEGACY G151 NICHOLS BLK DESTINY D12  
 ELLINGSON LEGACY M229 NICHOLS DEBRA D81  
 2171761 ELLINGSON MS PSTOCK K58 LRS PREFERRED STOCK 370C  
 ELLINGSON BL CLOUD D458  
 RITO 8K4 OF 5028RITO3X25 RITO 3X25 OF 5H11 EXT  
 HD DUNN ZARA 8299 RITA 5028 OF 2T4 AMBUSH  
 2695146 H D DUNN ZARA 8299 LEACHMAN GOOD NEWS  
 C H ZARA 4644

SIRE EPD
CED 17.6
BEPD -0.6
WEPD 59.1
YEPD 92.1
MILK 24.1
DAM EPD
CED 2.5
BEPD 0.9
WEPD 53.1
YEPD 87.3
MILK 25.1

CED	BEPD	WEPD	YEPD	MILK	Actual BW	205 Ratio	365 Ratio	PAP SCORE	Actual Scrotal
10.5	0	59.9	94.9	23.7	84	115	111	39	36

MARB	RE	API	TI	Dam Production
0.35	0.58	125.3	69.1	5-99

1/2 Angus 1/2 Simmental, Homozygous Polled and Homozygous Black.



**HD Dunn Legacy 3177 - Lot 39**

**41 HD DUNN LEGACY 3138**

Birth Date: 4/17/2013 Bull 2797311 Tattoo: A3138

NICHOLS LEGACY G151 NICHOLS BLK DESTINY D12  
 ELLINGSON LEGACY M229 NICHOLS DEBRA D81  
 2171761 ELLINGSON MS PSTOCK K58 LRS PREFERRED STOCK 370C  
 ELLINGSON BL CLOUD D458  
 R C BLACK CIGAR 0293 CONNEALY FRONTLINE  
 HD DUNN MERLE 7026 REV ROSE OF C H 8091  
 2695156 HD DUNN MERLE 5089 S A V 5175 BANDO 1024  
 C H MERLE C4341

SIRE EPD
CED 17.6
BEPD -0.6
WEPD 59.1
YEPD 92.1
MILK 24.1
DAM EPD
CED 12.2
BEPD -1.9
WEPD 52.4
YEPD 90.9
MILK 20.5

CED	BEPD	WEPD	YEPD	MILK	Actual BW	205 Ratio	365 Ratio	PAP SCORE	Actual Scrotal
14.9	-1.2	55.7	91.5	22.3	75	118	111	41	37

MARB	RE	API	TI	Dam Production
0.29	0.68	133	67.5	4-101

1/2 Angus 1/2 Simmental, Homozygous Polled and Homozygous Black.

**39 HD DUNN LEGACY 3177**

Birth Date: 4/21/2013 Bull 2797320 Tattoo: A3177

NICHOLS LEGACY G151 NICHOLS BLK DESTINY D12  
 ELLINGSON LEGACY M229 NICHOLS DEBRA D81  
 2171761 ELLINGSON MS PSTOCK K58 LRS PREFERRED STOCK 370C  
 ELLINGSON BL CLOUD D458  
 O C C LEGEND 616L O C C EMBLAZON 854E  
 HD DUNN SUSANNA 7369 O C C BLACKBIRD 632J  
 2695190 HD DUNN SUSANNA 9534 HBR PATENT 6307  
 SUSANNA OF C H 1129

SIRE EPD
CED 17.6
BEPD -0.6
WEPD 59.1
YEPD 92.1
MILK 24.1
DAM EPD
CED 16.3
BEPD -2.8
WEPD 41.4
YEPD 62.3
MILK 19.4

CED	BEPD	WEPD	YEPD	MILK	Actual BW	205 Ratio	365 Ratio	PAP SCORE	Actual Scrotal
18	-2.4	53.6	81.5	20.9	75	113	108	41	40.5

MARB	RE	API	TI	Dam Production
0.33	0.83	143.8	68.5	3-105

1/2 Angus 1/2 Simmental, Homozygous Polled and Homozygous Black.

**42 HD DUNN LEGACY 3232**

Birth Date: 4/23/2013 Bull 2797326 Tattoo: A3232

NICHOLS LEGACY G151 NICHOLS BLK DESTINY D12  
 ELLINGSON LEGACY M229 NICHOLS DEBRA D81  
 2171761 ELLINGSON MS PSTOCK K58 LRS PREFERRED STOCK 370C  
 ELLINGSON BL CLOUD D458  
 B C MARATHON 7022 O C C KIRBY 633K  
 HD DUNN MERLE 8148 GIBBET HILL MIGNONNE E37  
 2695223 HD DUNN MERLE 4245 N BAR EXPLOSION V 1495  
 H D DUNN MERLE 8122

SIRE EPD
CED 17.6
BEPD -0.6
WEPD 59.1
YEPD 92.1
MILK 24.1
DAM EPD
CED 2.4
BEPD 2.5
WEPD 56.0
YEPD 93.2
MILK 20.5

CED	BEPD	WEPD	YEPD	MILK	Actual BW	205 Ratio	365 Ratio	PAP SCORE	Actual Scrotal
8.7	1.9	61.8	99	21.3	96	111	104	46	37

MARB	RE	API	TI	Dam Production
0.36	0.72	112.3	68	4-103

1/2 Angus 1/2 Simmental, Homozygous Polled and Homozygous Black.

## 43 HD DUNN LEGACY 3205

Birth Date: 4/22/2013 Bull 2797316 Tattoo: A3205

NICHOLS LEGACY G151  
ELLINGSON LEGACY M229  
2171761 ELLINGSON MS PSTOCK K58

NICHOLS BLK DESTINY D12  
NICHOLS DEBRA D81  
LRS PREFERRED STOCK 370C  
ELLINGSON BL CLOUD D458

O C C HOMER 650H  
HD DUNN DIXIE ERICA 7248  
2695172 HD DUNN DIXIE ERICA 2156

O C C FOCUS 813F  
O C C DIXIE ERICA 816B  
O C C GREAT PLAINS 943G  
HD DUNN DIXIE ERICA 0356

SIRE	EPD
CED	17.6
BEPD	-0.6
WEPD	59.1
YEPD	92.1
MILK	24.1
DAM	EPD
CED	19.1
BEPD	-4.0
WEPD	40.8
YEPD	69.8
MILK	17.6

CED	BEPD	WEPD	YEPD	MILK	Actual BW	205 Ratio	365 Ratio	PAP SCORE	Actual Scrotal
18.8	-2.7	49	79.5	21	78	101	100	37	36.5

MARB	RE	API	TI	Dam Production
0.2	0.82	141.9	63.4	5-96

1/2 Angus 1/2 Simmental, Homozygous Polled and Homozygous Black.

## 47 HD DUNN PACESETTER 3362

Birth Date: 5/15/2013 Bull 2797305 Tattoo: A3362

ASR/GLS PACESETTER U862  
ASR PACESETTER Y142  
2598879 ASR MS CAMILLE T738

HOOKS PACESETTER 8P  
GLS S82  
ASR LITTLE BEAR L126  
ASR MS CAMILLE R565

HD DUNN EXPLOSION 1230  
HD DUNN ERICA LASSIE 5360  
2695137 H D DUNN ERICA LASSIE 8161

N BAR EXPLOSION V 1495  
SUSANNA OF C H 5060  
H D DUNN 114 TRAV 6220  
H D DUNN ERICA LASSIE 6326

SIRE	EPD
CED	12.9
BEPD	-1.0
WEPD	48.5
YEPD	84.6
MILK	26.8
DAM	EPD
CED	7.6
BEPD	-0.7
WEPD	36.7
YEPD	61.3
MILK	22.6

CED	BEPD	WEPD	YEPD	MILK	Actual BW	205 Ratio	365 Ratio	PAP SCORE	Actual Scrotal
10.6	-1	43.1	73.6	24.6	83	103	97	39	39.5

MARB	RE	API	TI	Dam Production
0.23	0.12	111.5	56.6	7-98

1/2 Angus 1/2 Simmental, Homozygous Polled and Homozygous Black.

## 44 HD DUNN PACESETTER 3331

Birth Date: 5/7/2013 Bull 2797332 Tattoo: A3331

ASR/GLS PACESETTER U862  
ASR PACESETTER Y142  
2598879 ASR MS CAMILLE T738

HOOKS PACESETTER 8P  
GLS S82  
ASR LITTLE BEAR L126  
ASR MS CAMILLE R565

CAR 461 TRACKER 6106  
HD DUNN MERLE 8310  
2695246 HD DUNN MERLE 4242

CAR TRACKER 461  
CAR MISS ROBERTA 068  
HYLINE RIGHT TIME 338  
MERLE OF C H 0005

SIRE	EPD
CED	12.9
BEPD	-1.0
WEPD	48.5
YEPD	84.6
MILK	26.8
DAM	EPD
CED	10.8
BEPD	-1.0
WEPD	45.5
YEPD	74.1
MILK	22.6

CED	BEPD	WEPD	YEPD	MILK	Actual BW	205 Ratio	365 Ratio	PAP SCORE	Actual Scrotal
12.1	-1.2	45.7	77.5	25.0	82	100	98	40	37

MARB	RE	API	TI	Dam Production
0.35	0.52	123.5	62.4	4-97

1/2 Angus 1/2 Simmental, Homozygous Polled and Homozygous Black.

## 48 HD DUNN PACESETTER 3401

Birth Date: 5/21/2013 Bull 2797330 Tattoo: A3401

ASR/GLS PACESETTER U862  
ASR PACESETTER Y142  
2598879 ASR MS CAMILLE T738

HOOKS PACESETTER 8P  
GLS S82  
ASR LITTLE BEAR L126  
ASR MS CAMILLE R565

BOYD NEW DAY 8005  
HD DUNN FOREVER LADY 8280  
2695237 HD DUNN FOREVER LADY 2462

A A R NEW TREND  
S V F FOREVER LADY 57D  
RITO 8K4 OF 5028RITO3X25  
C H FOREVER LADY 4476

SIRE	EPD
CED	12.9
BEPD	-1.0
WEPD	48.5
YEPD	84.6
MILK	26.8
DAM	EPD
CED	10.1
BEPD	-0.2
WEPD	54.1
YEPD	96.7
MILK	27.1

CED	BEPD	WEPD	YEPD	MILK	Actual BW	205 Ratio	365 Ratio	PAP SCORE	Actual Scrotal
11.8	-0.9	49.7	88.3	27.3	82	102	106	36	40

MARB	RE	API	TI	Dam Production
0.57	0.55	136.1	70.2	4-99

1/2 Angus 1/2 Simmental, Homozygous Polled and Homozygous Black.

## 45 HD DUNN PACESETTER 3378

Birth Date: 5/17/2013 Bull 2797315 Tattoo: A3378

ASR/GLS PACESETTER U862  
ASR PACESETTER Y142  
2598879 ASR MS CAMILLE T738

HOOKS PACESETTER 8P  
GLS S82  
ASR LITTLE BEAR L126  
ASR MS CAMILLE R565

O C C LEGEND 616L  
HD DUNN MERLE 7206  
2695168 C H MERLE 4492

O C C EMBLAZON 854E  
O C C BLACKBIRD 632J  
H A RITO TRAVELER 048  
MERLE OF C H 2208

SIRE	EPD
CED	12.9
BEPD	-1.0
WEPD	48.5
YEPD	84.6
MILK	26.8
DAM	EPD
CED	14.7
BEPD	-1.8
WEPD	42.5
YEPD	57.4
MILK	18.3

CED	BEPD	WEPD	YEPD	MILK	Actual BW	205 Ratio	365 Ratio	PAP SCORE	Actual Scrotal
14	-1.4	50.4	77.8	21.4	82	113	109	42	36

MARB	RE	API	TI	Dam Production
0.27	0.56	124.4	63.2	3-100

1/2 Angus 1/2 Simmental, Homozygous Polled and Homozygous Black.

## 49 HD DUNN PACESETTER 3367

Birth Date: 5/16/2013 Bull 2797329 Tattoo: A3367

ASR/GLS PACESETTER U862  
ASR PACESETTER Y142  
2598879 ASR MS CAMILLE T738

HOOKS PACESETTER 8P  
GLS S82  
ASR LITTLE BEAR L126  
ASR MS CAMILLE R565

B C MARATHON 7022  
HD DUNN DIXIE ERICA 8256  
2695235 HD DUNN DIXIE ERICA 4142

O C C KIRBY 633K  
GIBBET HILL MIGNONNE E37  
HYLINE RIGHT TIME 338  
HD DUNN DIXIE ERICA 1534

SIRE	EPD
CED	12.9
BEPD	-1.0
WEPD	48.5
YEPD	84.6
MILK	26.8
DAM	EPD
CED	6.3
BEPD	1.2
WEPD	59.0
YEPD	97.5
MILK	17.6

CED	BEPD	WEPD	YEPD	MILK	Actual BW	205 Ratio	365 Ratio	PAP SCORE	Actual Scrotal
10.2	-0.4	51.5	87.7	22.8	82	99	97	40	35

MARB	RE	API	TI	Dam Production
0.37	0.8	117.8	65.4	4-92

1/2 Angus 1/2 Simmental, Homozygous Polled and Homozygous Black.

## 46 HD DUNN PACESETTER 3398

Birth Date: 5/20/2013 Bull 2797321 Tattoo: A3398

ASR/GLS PACESETTER U862  
ASR PACESETTER Y142  
2598879 ASR MS CAMILLE T738

HOOKS PACESETTER 8P  
GLS S82  
ASR LITTLE BEAR L126  
ASR MS CAMILLE R565

GDAR FUTURE DIRECTION 3426  
HD DUNN SUSANNA 7498  
2695196 HD DUNN SUSANNA 4108

C A FUTURE DIRECTION 5321  
GDAR SHOSHONE LADY 7311  
HYLINE RIGHT TIME 338  
HD DUNN SUSANNA 0122

SIRE	EPD
CED	12.9
BEPD	-1.0
WEPD	48.5
YEPD	84.6
MILK	26.8
DAM	EPD
CED	12.3
BEPD	-0.2
WEPD	50.5
YEPD	85.9
MILK	27.9

CED	BEPD	WEPD	YEPD	MILK	Actual BW	205 Ratio	365 Ratio	PAP SCORE	Actual Scrotal
11.1	0.5	54.4	92.4	26.2	95	112	113	41	37.5

MARB	RE	API	TI	Dam Production
0.48	0.6	127.5	68.4	5-102

1/2 Angus 1/2 Simmental, Homozygous Polled and Homozygous Black.



Phil and Mary Poland

# 50 HD DUNN GAME DAY 3078

Birth Date: 3-26-2013 Bull 17715201 Tattoo: 3078

#+GDAR Game Day 449 <sup>ROF</sup>

#+Boyd New Day 8005

HD Dunn Game Day 1171

HD Dunn Rev Rose 2247

#GDAR Miss Wix 474

HD Dunn Cornerstone 9499

HD Dunn Rev Rose 7299

#Mytty In Focus <sup>ROF</sup>

HD Dunn Lass 1269

17094620 HD Dunn Lass 8338

#SAF Focus of ER

Mytty Countess 906

#+Boyd New Day 8005

+HD Dunn Lass 1256

SIRE	EPD
CED	+9
BEPD	-8
WEPD	+48
YEPD	+75
MILK	+21
DAM	EPD
CED	+12
BEPD	-6
WEPD	+52
YEPD	+87
MILK	+25

CED	BEPD	WEPD	YEPD	MILK	Actual BW	205 Ratio	365 Ratio	PAP SCORE	Actual Scrotal
+10	-.5	+52	+82	+23	71	109	102	39	37.5
MARB	RE	\$EN	\$W	\$F	\$G	\$B	Dam Production		
+.32	+.34	-2.88	+39.47	+23.80	+23.44	+50.80	1-109		

Lot 50 was used to breed a group of our heifers.

# 51 HD DUNN GAME DAY 3305

Birth Date: 4-29-2013 Bull 17638616 Tattoo: 3305

#+Boyd New Day 8005

#AAR New Trend

GDAR Game Day 449 <sup>ROF</sup>

#+14691231 #GDAR Miss Wix 474

SVF Forever Lady 57D

#Tehama Band 207

GDAR Miss Wix 749

#+BT Right Time 24J

HD Dunn Env Blackbird 6017

15632907 HD Dunn Env Blackbird 4360

#+Leachman Right Time

Sitz Everelda Entense 1905

HD Dunn New Design 2067

HD Dunn Env Blackbird 2043

SIRE	EPD
CED	+9
BEPD	-3
WEPD	+51
YEPD	+95
MILK	+26
DAM	EPD
CED	-1
BEPD	+3.3
WEPD	+44
YEPD	+74
MILK	+27

CED	BEPD	WEPD	YEPD	MILK	Actual BW	205 Ratio	365 Ratio	PAP SCORE	Actual Scrotal
+0	+3.5	+48	+84	+27	100	109	103	42	38
MARB	RE	\$EN	\$W	\$F	\$G	\$B	Dam Production		
+.31	+.59	-6.21	+30.73	+28.25	+25.83	+53.30	5-109		

# 52 HD DUNN GAME DAY 3300

Birth Date: 4-29-2013 Bull 17638598 Tattoo: 3300

#+Boyd New Day 8005

#AAR New Trend

GDAR Game Day 449 <sup>ROF</sup>

#+14691231 #GDAR Miss Wix 474

SVF Forever Lady 57D

#Tehama Band 207

GDAR Miss Wix 749

Sinclair Mountain Pass 4P138

HD Dunn Black Miss 0199

16794774 HD Dunn Black Miss 7033

#N Bar Prime Time D806

N Bar Kinochtry Beauty V1490

#RC Black Cigar 0293

HD Dunn Black Miss 5019

SIRE	EPD
CED	+9
BEPD	-3
WEPD	+51
YEPD	+95
MILK	+26
DAM	EPD
CED	-2
BEPD	+3.1
WEPD	+47
YEPD	+88
MILK	+23

CED	BEPD	WEPD	YEPD	MILK	Actual BW	205 Ratio	365 Ratio	PAP SCORE	Actual Scrotal
+1	+2.7	+49	+91	+25	92	105	102	49	39
MARB	RE	\$EN	\$W	\$F	\$G	\$B	Dam Production		
+.46	+.67	-5.19	+31.76	+36.75	+28.32	+59.19	2-107		

# 53 HD DUNN GAME DAY 3014

Birth Date: 3-3-2013 Bull 17639652 Tattoo: 3014

#+Boyd New Day 8005

#AAR New Trend

GDAR Game Day 449 <sup>ROF</sup>

#+14691231 #GDAR Miss Wix 474

SVF Forever Lady 57D

#Tehama Band 207

GDAR Miss Wix 749

#Mytty In Focus <sup>ROF</sup>

HD Dunn Dixie Erica 1021

17094606 HD Dunn Dixie Erica 9360

#SAF Focus of ER

Mytty Countess 906

CAR 461 Tracker 6106

HD Dunn Dixie Erica 2156

SIRE	EPD
CED	+9
BEPD	-3
WEPD	+51
YEPD	+95
MILK	+26
DAM	EPD
CED	+7
BEPD	+1.5
WEPD	+48
YEPD	+88
MILK	+24

CED	BEPD	WEPD	YEPD	MILK	Actual BW	205 Ratio	365 Ratio	PAP SCORE	Actual Scrotal
+8	+6	+52	+98	+26	76	104	115	36	36.5
MARB	RE	\$EN	\$W	\$F	\$G	\$B	Dam Production		
+.55	+.58	+.01	+45.98	+44.46	+26.70	+69.46	1-104		

# 54 HD DUNN GAME DAY 3280

Birth Date: 4-26-2013 Bull 17638603 Tattoo: 3280

#+Boyd New Day 8005

#AAR New Trend

GDAR Game Day 449 <sup>ROF</sup>

#+14691231 #GDAR Miss Wix 474

SVF Forever Lady 57D

#Tehama Band 207

GDAR Miss Wix 749

Hyline Ambush 145

HD Dunn Primrose 8365

#16334743 HD Dunn Primrose 2216

+Hyline Ambush 6700

Hyline Blackcap 219

#GDAR Royce 5140

HD Dunn Primrose 8094

SIRE	EPD
CED	+9
BEPD	-3
WEPD	+51
YEPD	+95
MILK	+26
DAM	EPD
CED	+5
BEPD	+2.3
WEPD	+41
YEPD	+76
MILK	+25

CED	BEPD	WEPD	YEPD	MILK	Actual BW	205 Ratio	365 Ratio	PAP SCORE	Actual Scrotal
+12	-.9	+45	+85	+26	74	102	105	37	37
MARB	RE	\$EN	\$W	\$F	\$G	\$B	Dam Production		
+.45	+.55	+1.93	+42.37	+31.00	+25.88	+53.62	4-106		

Lot 54 was used to breed a group of our heifers.

# 55 HD DUNN GAME DAY 3219

Birth Date: 4-23-2013 Bull 17638606 Tattoo: 3219

#+Boyd New Day 8005

#AAR New Trend

GDAR Game Day 449 <sup>ROF</sup>

#+14691231 #GDAR Miss Wix 474

SVF Forever Lady 57D

#Tehama Band 207

GDAR Miss Wix 749

#RC Black Cigar 0293

HD Dunn Merle 7018

15942643 HD Dunn Merle 5132

#Connealy Frontline

Rev Rose of CH 8091

#Hyline Right Time 338

HD Dunn Merle 1099

SIRE	EPD
CED	+9
BEPD	-3
WEPD	+51
YEPD	+95
MILK	+26
DAM	EPD
CED	-2
BEPD	+3.8
WEPD	+53
YEPD	+91
MILK	+18

CED	BEPD	WEPD	YEPD	MILK	Actual BW	205 Ratio	365 Ratio	PAP SCORE	Actual Scrotal
+2	+2.9	+52	+92	+22	94	101	100	37	35
MARB	RE	\$EN	\$W	\$F	\$G	\$B	Dam Production		
+.37	+.64	-2.55	+32.06	+36.53	+28.02	+61.56	5-99		

# 56 HD DUNN GAME DAY 3046

Birth Date: 3-12-2013 Bull 17638219 Tattoo: 3046

#+Boyd New Day 8005

#AAR New Trend

GDAR Game Day 449 <sup>ROF</sup>

#+14691231 #GDAR Miss Wix 474

SVF Forever Lady 57D

#Tehama Band 207

GDAR Miss Wix 749

#+OCC Great Plains 943G

HD Dunn Blackbird 1215

17092336 HD Dunn Blackbird 9396

#N Bar Emulation EXT

Dixie Erica of CH 1019

CH Explosion 7219

HD Dunn Blackbird 7208

SIRE	EPD
CED	+9
BEPD	-3
WEPD	+51
YEPD	+95
MILK	+26
DAM	EPD
CED	+5
BEPD	+1.4
WEPD	+31
YEPD	+60
MILK	+22

CED	BEPD	WEPD	YEPD	MILK	Actual BW	205 Ratio	365 Ratio	PAP SCORE	Actual Scrotal
+9	-.4	+41	+78	+24	70	99	99	40	33.5
MARB	RE	\$EN	\$W	\$F	\$G	\$B	Dam Production		
+.40	+.72	+.86	+33.30	+24.13	+28.52	+57.18	1-99		

# 57 HD DUNN GAME DAY 3185

Birth Date: 4-21-2013 Bull 17638231 Tattoo: 3185

#+Boyd New Day 8005

#AAR New Trend

GDAR Game Day 449 <sup>ROF</sup>

#+14691231 #GDAR Miss Wix 474

SVF Forever Lady 57D

#Tehama Band 207

GDAR Miss Wix 749

+Sinclair Network 1U7

HD Dunn Blackbird 5321

15209737 HD Dunn Blackbird 0401

#Papa Universe 515

Papa Envious Blackbird 8832

N Bar Explosion V1495

CH Blackbird 1052

SIRE	EPD
CED	+9
BEPD	-3
WEPD	+51
YEPD	+95
MILK	+26
DAM	EPD
CED	+0
BEPD	+3.2
WEPD	+27
YEPD	+50
MILK	+15

CED	BEPD	WEPD	YEPD	MILK	Actual BW	205 Ratio	365 Ratio	PAP SCORE	Actual Scrotal
+5	+1.3	+40	+75	+21	83	98	100	37	37.5
MARB	RE	\$EN	\$W	\$F	\$G	\$B	Dam Production		
+.31	+.71	+5.41	+29.81	+20.89	+27.24	+47.13	7-97		

# 58 HD DUNN GAME DAY 3038

Birth Date: 3-7-2013 Bull 17638218 Tattoo: 3038  
 #+Boyd New Day 8005 #AAR New Trend  
**GDAR Game Day 449** #SVF Forever Lady 57D  
 #14691231 #GDAR Miss Wix 474 #Tehama Band 207  
 GDAR Miss Wix 749

SIRE	EPD
CED	+9
BEPD	-3
WEPD	+51
YEPD	+95
MILK	+26
DAM	EPD
CED	-3
BEPD	+4.5
WEPD	+41
YEPD	+78
MILK	+21

Hylme Ambush 145 +Hylme Ambush 6700  
**HD Dunn Dixie Erica 1358** Hylme Blackcap 219  
 17092357 HD Dunn Dixie Erica 4280 #Hylme Right Time 338  
 +HD Dunn Dixie Erica 9282

CED	BEPD	WEPD	YEPD	MILK	Actual BW	205 Ratio	365 Ratio	PAP SCORE	Actual Scrotal
+4	+2.3	+45	+88	+24	79	97	104	42	37
MARB	RE	\$EN	\$W	\$F	\$G	\$B	Dam Production		
+37	+67	-3.39	+28.82	+34.86	+27.02	+60.36	1-97		

# 59 HD DUNN BEXTOR 3095

Birth Date: 3-31-2013 Bull 17715210 Tattoo: 3095  
 #CRA Bextor 872 5205 608 #BAR Ext Traveler 205  
**HD Dunn Bextor 1266** Cra Lady Jaye 608 498 S Easy  
 17092794 #HD Dunn Lass 6180 #+Boyd New Day 8005  
 HD Dunn Lass 3439

SIRE	EPD
CED	+7
BEPD	+1.1
WEPD	+65
YEPD	+112
MILK	+25
DAM	EPD
CED	+6
BEPD	+8
WEPD	+49
YEPD	+87
MILK	+31

#+GDAR Game Day 449 #+Boyd New Day 8005  
**HD Dunn Blackbird 1125** #GDAR Miss Wix 474  
 17094703 HD Dunn Blackbird 3074 #Bon View New Design 878  
 HD Dunn Blackbird 1431

CED	BEPD	WEPD	YEPD	MILK	Actual BW	205 Ratio	365 Ratio	PAP SCORE	Actual Scrotal
+5	+1.5	+63	+109	+28	79	122	120	37	37
MARB	RE	\$EN	\$W	\$F	\$G	\$B	Dam Production		
+33	+64	-21.01	+38.13	+53.62	+25.26	+71.31	1-122		

Lot 59 was used to breed a group of our cows.



HD Dunn Bextor 3101 - Lot 60

# 60 HD DUNN BEXTOR 3101

Birth Date: 4-3-2013 Bull 17715214 Tattoo: 3101  
 #CRA Bextor 872 5205 608 #BAR Ext Traveler 205  
**HD Dunn Bextor 1266** Cra Lady Jaye 608 498 S Easy  
 17092794 #HD Dunn Lass 6180 #+Boyd New Day 8005  
 HD Dunn Lass 3439

SIRE	EPD
CED	+7
BEPD	+1.1
WEPD	+65
YEPD	+112
MILK	+25
DAM	EPD
CED	+3
BEPD	+5
WEPD	+42
YEPD	+77
MILK	+27

Sinclair Mountain Pass 4P138 #N Bar Prime Time D806  
**HD Dunn Merle 1181** N Bar Kinochtry Beauty V1490  
 17092328 HD Dunn Merle 3040 #Bon View New Design 878  
 +HD Dunn Merle 1160

CED	BEPD	WEPD	YEPD	MILK	Actual BW	205 Ratio	365 Ratio	PAP SCORE	Actual Scrotal
+2	+2.2	+59	+104	+26	87	119	118	38	40
MARB	RE	\$EN	\$W	\$F	\$G	\$B	Dam Production		
+53	+23	-16.19	+33.91	+48.90	+24.90	+72.89	1-119		

# 61 HD DUNN BEXTOR 3269

Birth Date: 4-25-2013 Bull 17638520 Tattoo: 3269  
 #BAR Ext Traveler 205 #N Bar Emulation EXT  
**CRA Bextor 872 5205 608** #BAR Queen Traveler 3015  
 #13009379 Cra Lady Jaye 608 498 S Easy #+GAR Sleep Easy 1009  
 HHF 917 Lady 975 498

SIRE	EPD
CED	+8
BEPD	+1.5
WEPD	+51
YEPD	+90
MILK	+31
DAM	EPD
CED	-3
BEPD	+4.5
WEPD	+50
YEPD	+70
MILK	+22

OCC Legend 616L #+OCC Emblazon 854E  
**HD Dunn Merle 8239** OCC Blackbird 632J  
 16228674 #HD Dunn Merle 3523 Rito 8K4 of 5028 Rito 3X25  
 HD Dunn Merle 3608

CED	BEPD	WEPD	YEPD	MILK	Actual BW	205 Ratio	365 Ratio	PAP SCORE	Actual Scrotal
+4	+2.3	+54	+82	+26	85	109	103	54	36
MARB	RE	\$EN	\$W	\$F	\$G	\$B	Dam Production		
+47	+44	-4.75	+39.99	+22.84	+35.34	+56.78	4-106		

# 62 HD DUNN UPWARD 3162

Birth Date: 4-19-2013 Bull 17638622 Tattoo: 3162  
 #Connealy Onward #Connealy Lead On  
**Sitz Upward 307R** Altune of Conanga 6104  
 #14963730 Sitz Henrietta Pride 81M #Sitz Value 7097  
 Sitz Henrietta Pride 1370

SIRE	EPD
CED	+5
BEPD	+2.5
WEPD	+71
YEPD	+132
MILK	+40
DAM	EPD
CED	+5
BEPD	+1.1
WEPD	+44
YEPD	+79
MILK	+22

Sitz Rainmaker 8276 #Sitz Rainmaker 6169  
**HD Dunn Miss Wix Ever 0470** #Sitz Erica Everelda 3172  
 17035461 HD Dunn Miss Wix Ever 6554 Rito 8K4 of 5028 Rito 3X25  
 HD Dunn Miss Wix Ever 0453

CED	BEPD	WEPD	YEPD	MILK	Actual BW	205 Ratio	365 Ratio	PAP SCORE	Actual Scrotal
+8	+4	+59	+103	+31	70	107	99	41	34.5
MARB	RE	\$EN	\$W	\$F	\$G	\$B	Dam Production		
+43	+69	-18.34	+42.93	+47.54	+28.79	+95.48	2-102		

# 63 HD DUNN UPWARD 3267

Birth Date: 4-25-2013 Bull 17638658 Tattoo: 3267  
 #Connealy Onward #Connealy Lead On  
**Sitz Upward 307R** Altune of Conanga 6104  
 #14963730 Sitz Henrietta Pride 81M #Sitz Value 7097  
 Sitz Henrietta Pride 1370

SIRE	EPD
CED	+5
BEPD	+2.5
WEPD	+71
YEPD	+132
MILK	+40
DAM	EPD
CED	+4
BEPD	+1.2
WEPD	+47
YEPD	+84
MILK	+26

#Sitz Alliance 7544 #Sitz Alliance 6595  
**HD Dunn Frances 8010** Sitz Pride 2561  
 #16228617 HD Dunn Frances 6302 #G 13 Structure  
 HD Dunn Frances 9622

CED	BEPD	WEPD	YEPD	MILK	Actual BW	205 Ratio	365 Ratio	PAP SCORE	Actual Scrotal
+2	+2.8	+58	+113	+33	95	105	116	39	38.5
MARB	RE	\$EN	\$W	\$F	\$G	\$B	Dam Production		
+26	+30	-26.10	+32.44	+61.92	+12.65	+86.70	4-106		

# 64 HD DUNN UPWARD 3192

Birth Date: 4-22-2013 Bull 17638646 Tattoo: 3192  
 #Connealy Onward #Connealy Lead On  
**Sitz Upward 307R** Altune of Conanga 6104  
 #14963730 Sitz Henrietta Pride 81M #Sitz Value 7097  
 Sitz Henrietta Pride 1370

SIRE	EPD
CED	+5
BEPD	+2.5
WEPD	+71
YEPD	+132
MILK	+40
DAM	EPD
CED	+9
BEPD	+5
WEPD	+39
YEPD	+75
MILK	+21

Sitz Rainmaker 8276 #Sitz Rainmaker 6169  
**HD Dunn Merle 9421** #Sitz Erica Everelda 3172  
 16492844 HD Dunn Merle 3076 #+OCC Great Plains 943G  
 HD Dunn Merle 1346

CED	BEPD	WEPD	YEPD	MILK	Actual BW	205 Ratio	365 Ratio	PAP SCORE	Actual Scrotal
+6	+1.7	+56	+101	+30	84	104	99	40	41.5
MARB	RE	\$EN	\$W	\$F	\$G	\$B	Dam Production		
+45	+53	-17.19	+37.51	+46.41	+24.16	+93.24	3-96		

### 65 HD DUNN UPWARD 3164

Birth Date: 4-20-2013 Bull 17638666 Tattoo: 3164  
#Connealy Onward #Connealy Lead On

Sitz Upward 307R  
#14963730 Sitz Henrietta Pride 81M

#+OCC Great Plains 943G  
HD Dunn Dixie Erica 6410  
#15632937 HD Dunn Dixie Erica 3305

#N Bar Emulation EXT  
Dixie Erica of CH 1019  
#BCC Bushwacker 41-93  
HD Dunn Dixie Erica 8147

SIRE	EPD
CED	+5
BEPD	+2.5
WEPD	+71
YEPD	+132
MILK	+40
DAM	
EPD	
CED	-2
BEPD	+4.1
WEPD	+46
YEPD	+78
MILK	+21

CED	BEPD	WEPD	YEPD	MILK	Actual BW	205 Ratio	365 Ratio	PAP SCORE	Actual Scrotal
+2	+3.1	+56	+102	+31	86	100	97	36	39.5
MARB	RE	\$EN	\$W	\$F	\$G	\$B	Dam Production		
+5.0	+36	-10.73	+41.89	+47.76	+25.42	+91.84	5-103		

### 66 SBA UPWARD 025

Birth Date: 4-30-2013 Bull 17655852 Tattoo: 025  
#Connealy Onward #Connealy Lead On

Sitz Upward 307R  
#14963730 Sitz Henrietta Pride 81M

Sitz Rainmaker 8276  
HD Dunn Merle 9416  
#16492842 HD Dunn Merle 5344

#Sitz Rainmaker 6169  
#Sitz Erica Everelda 3172  
+Rito 3X39 of 2536 EXP  
HD Dunn Merle 1449

SIRE	EPD
CED	+5
BEPD	+2.5
WEPD	+71
YEPD	+132
MILK	+40
DAM	
EPD	
CED	+4
BEPD	+2.3
WEPD	+46
YEPD	+80
MILK	+24

CED	BEPD	WEPD	YEPD	MILK	Actual BW	205 Ratio	365 Ratio	PAP SCORE	Actual Scrotal
+4	+2.7	+57	+100	+32	83	102	95	35	35
MARB	RE	\$EN	\$W	\$F	\$G	\$B	Dam Production		
+5.1	+41	-19.13	+37.11	+44.55	+26.64	+94.20	3-99		

### 67 HD DUNN UPWARD 3322

Birth Date: 5-3-2013 Bull 17745176 Tattoo: 3322  
#Sitz Upward 307R #Connealy Onward

HD Dunn Upward 1194  
#17094748 HD Dunn Dixie Erica 4556

Rito 8K4 of 5028 Rito 3X25  
HD Dunn Pride 2158  
#14221913 HD Dunn Pride 8190

Sitz Henrietta Pride 81M  
#+OCC Great Plains 943G  
+HD Dunn Dixie Erica 0059

#+Rito 3X25 of 5H11 EXT  
#+Rita 5028 of 2T4 Ambush  
#GDAR Royce 5140  
Cole Creek 054 Pride 104V

SIRE	EPD
CED	+1
BEPD	+4.2
WEPD	+62
YEPD	+110
MILK	+28
DAM	
EPD	
CED	+2
BEPD	+2.0
WEPD	+36
YEPD	+66
MILK	+21

CED	BEPD	WEPD	YEPD	MILK	Actual BW	205 Ratio	365 Ratio	PAP SCORE	Actual Scrotal
+0	+3.8	+47	+86	+24	88	99	99	42	39
MARB	RE	\$EN	\$W	\$F	\$G	\$B	Dam Production		
+4.4	+25	-2.42	+27.82	+31.29	+26.50	+73.15	9-100		

### 68 HD DUNN IN FOCUS 3104

Birth Date: 4-4-2013 Bull 17638224 Tattoo: 3104  
#Mytty In Focus #SAF Focus of ER

HD Dunn in Focus 1119  
#17094629 HD Dunn Susanna 7498

+Riverbend Direction 4333  
HD Dunn Merle 6368  
#15632931 HD Dunn Merle 0352

Mytty Countess 906  
GDAR Future Direction 3426  
#HD Dunn Susanna 4108

#CA Future Direction 5321  
+BT Everelda Entense 76D  
Leachman Good News  
HD Dunn Merle 6274

SIRE	EPD
CED	+10
BEPD	-8
WEPD	+46
YEPD	+83
MILK	+27
DAM	
EPD	
CED	-6
BEPD	+6.6
WEPD	+36
YEPD	+61
MILK	+26

CED	BEPD	WEPD	YEPD	MILK	Actual BW	205 Ratio	365 Ratio	PAP SCORE	Actual Scrotal
+4	+2.5	+40	+71	+26	85	98	98	46	36.5
MARB	RE	\$EN	\$W	\$F	\$G	\$B	Dam Production		
+4.8	+24	-2.15	+27.49	+16.03	+29.69	+62.44	5-102		

### 69 HD DUNN IN FOCUS 3094

Birth Date: 3-31-2013 Bull 17715207 Tattoo: 3094  
#Mytty In Focus #SAF Focus of ER

HD Dunn MYTTY in Focus 1030  
#17094513 HD Dunn Kate 9413

Sitz Rainmaker 8276  
HD Dunn Forever Lady 4060  
#17092350 HD Dunn Forever Lady 4060

Mytty Countess 906  
Hyline Right Time 745  
#HD Dunn Kate 3493

#Sitz Rainmaker 6169  
#Sitz Erica Everelda 3172  
#+OCC Great Plains 943G  
HD Dunn Forever Lady 2462

SIRE	EPD
CED	+8
BEPD	+1.3
WEPD	+50
YEPD	+90
MILK	+25
DAM	
EPD	
CED	-2
BEPD	+4.3
WEPD	+48
YEPD	+92
MILK	+27

CED	BEPD	WEPD	YEPD	MILK	Actual BW	205 Ratio	365 Ratio	PAP SCORE	Actual Scrotal
+4	+2.8	+51	+96	+26	78	107	111	44	39
MARB	RE	\$EN	\$W	\$F	\$G	\$B	Dam Production		
+5.4	+09	-12.71	+27.61	+42.31	+24.98	+74.15	1-107		

### 70 HD DUNN 616 RITO 3175

Birth Date: 4-21-2013 Bull 17638502 Tattoo: 3175  
#DHD Traveler 6807 #QAS Traveler 23-4

Rito 616 of 4B20 6807  
#12530601 +Rita 4B20 of OFB1 Bando

#Hyline Right Time 338  
HD Dunn Blackbird 6126  
#15632919 HD Dunn Blackbird 3206

#Bernindful Maid DHD 0807  
#Tehama Bando 155  
+Rita OFB1 of 5H11 Fullback

#+Leachman Right Time  
Hyline Pride 265  
#+OCC Great Plains 943G  
HD Dunn Blackbird 6323

SIRE	EPD
CED	+10
BEPD	-4
WEPD	+39
YEPD	+78
MILK	+17
DAM	
EPD	
CED	-6
BEPD	+5.9
WEPD	+48
YEPD	+85
MILK	+25

CED	BEPD	WEPD	YEPD	MILK	Actual BW	205 Ratio	365 Ratio	PAP SCORE	Actual Scrotal
+3	+2.6	+43	+78	+21	88	99	95	40	35
MARB	RE	\$EN	\$W	\$F	\$G	\$B	Dam Production		
+4.2	+37	+1.72	+26.10	+23.16	+30.41	+77.69	6-103		

### 71 HD DUNN 616 RITO 3216

Birth Date: 4-22-2013 Bull 17638505 Tattoo: 3216  
#DHD Traveler 6807 #QAS Traveler 23-4

Rito 616 of 4B20 6807  
#12530601 +Rita 4B20 of OFB1 Bando

#+BT Right Time 24J  
HD Dunn Blackbird 6032  
#15632910 HD Dunn Blackbird 4518

#Bernindful Maid DHD 0807  
#Tehama Bando 155  
+Rita OFB1 of 5H11 Fullback

#+Leachman Right Time  
Sitz Everelda Entense 1905  
HD Dunn Cornerstone 9499  
HD Dunn Blackbird 9433

SIRE	EPD
CED	+10
BEPD	-4
WEPD	+39
YEPD	+78
MILK	+17
DAM	
EPD	
CED	+6
BEPD	+2.0
WEPD	+44
YEPD	+72
MILK	+20

CED	BEPD	WEPD	YEPD	MILK	Actual BW	205 Ratio	365 Ratio	PAP SCORE	Actual Scrotal
+8	+5	+42	+75	+19	77	100	98	46	36.5
MARB	RE	\$EN	\$W	\$F	\$G	\$B	Dam Production		
+4.0	+15	+5.89	+30.05	+19.94	+29.40	+62.05	5-103		

### 72 HD DUNN BEXTOR 3169

Birth Date: 4-20-2013 Bull 17638514 Tattoo: 3169  
#BAR Ext Traveler 205 #N Bar Emulation EXT

CRA Bextor 872 5205 608  
#13009379 Cra Lady Jaye 608 498 S Easy

+OCC Rising Sun 739R  
HD Dunn Kate 9011  
#16792183 HD Dunn Kate 7364

#BAR Queen Traveler 3015  
#+GAR Sleep Easy 1009  
HHF 917 Lady 975 498

OCC Jet Stream 825J  
+OCC Dixie Erica 805G  
#Sitz Tradition RLS 8702  
#HD Dunn Kate 3493

SIRE	EPD
CED	+8
BEPD	+1.5
WEPD	+51
YEPD	+90
MILK	+31
DAM	
EPD	
CED	+6
BEPD	+9
WEPD	+39
YEPD	+72
MILK	+19

CED	BEPD	WEPD	YEPD	MILK	Actual BW	205 Ratio	365 Ratio	PAP SCORE	Actual Scrotal
+6	+1.4	+47	+83	+25	85	104	102	50	37.5
MARB	RE	\$EN	\$W	\$F	\$G	\$B	Dam Production		
+3.9	+59	-3.92	+34.21	+27.48	+32.93	+54.75	3-98		

## 73 HD DUNN BEXTOR 3084

Birth Date: 3-27-2013 Bull 17715203 Tattoo: 3084  
 #CRA Bextor 872 5205 608 #BAR Ext Traveler 205  
 HD Dunn Bextor 1266 Cra Lady Jaye 608 498 S Easy  
 17092794 #HD Dunn Lass 6180 #+Boyd New Day 8005  
 HD Dunn Lass 3439

#+OCC Great Plains 943G #N Bar Emulation EXT  
 HD Dunn Merle 1209 Dixie Erica of CH 1019  
 17092333 #HD Dunn Merle 3523 Rito 8K4 of 5028 Rito 3X25  
 HD Dunn Merle 9608

SIRE EPD
CED +7
BEPD +1.1
WEPD +65
YEPD +112
MILK +25
DAM EPD
CED -6
BEPD +4.8
WEPD +47
YEPD +72
MILK +26

CED	BEPD	WEPD	YEPD	MILK	Actual BW	205 Ratio	365 Ratio	PAP SCORE	Actual Scrotal
+1	+3.1	+56	+91	+25	81	106	101	37	33
MARB	RE	\$EN	\$W	\$F	\$G	\$B	Dam Production		
+4.4	+4.8	-9.27	+33.78	+33.23	+31.27	+69.58	1-106		

## 77 HD DUNN BLACK CEDAR 3227

Birth Date: 4-23-2013 Bull 17641865 Tattoo: 3227  
 #CH Quantum 6247 #CH Quantum 3330  
 Cole Creek Black Cedar 46P CH Blackbird 0136  
 14496765 Cole Creek Clova Juanada 67 #AAR Windy Ridge 523  
 Cole Creek Clova Juanada 811

Hyline Ambush 145 +Hyline Ambush 6700  
 HD Dunn Merle 9462 Hyline Blackcap 219  
 16492863 HD Dunn Merle 5193 #Hyline Right Time 338  
 HD Dunn Merle 0376

SIRE EPD
CED +8
BEPD +2.4
WEPD +50
YEPD +89
MILK +22
DAM EPD
CED +6
BEPD +1.7
WEPD +43
YEPD +75
MILK +28

CED	BEPD	WEPD	YEPD	MILK	Actual BW	205 Ratio	365 Ratio	PAP SCORE	Actual Scrotal
+9	+1.0	+43	+76	+25	75	96	95	39	36
MARB	RE	\$EN	\$W	\$F	\$G	\$B	Dam Production		
+4.9	+3.5	+9.1	+35.38	+20.69	+28.22	+69.71	3-104		

## 74 HD DUNN BEXTOR 3074

Birth Date: 3-25-2013 Bull 17715199 Tattoo: 3074  
 #CRA Bextor 872 5205 608 #BAR Ext Traveler 205  
 HD Dunn Bextor 1266 Cra Lady Jaye 608 498 S Easy  
 17092794 #HD Dunn Lass 6180 #+Boyd New Day 8005  
 HD Dunn Lass 3439

#+OCC Great Plains 943G #N Bar Emulation EXT  
 HD Dunn Lass 1203 Dixie Erica of CH 1019  
 17092330 HD Dunn Lass 8442 Hyline Right Time 745  
 #CH Lass 2085

SIRE EPD
CED +7
BEPD +1.1
WEPD +65
YEPD +112
MILK +25
DAM EPD
CED +2
BEPD +2.1
WEPD +35
YEPD +60
MILK +21

CED	BEPD	WEPD	YEPD	MILK	Actual BW	205 Ratio	365 Ratio	PAP SCORE	Actual Scrotal
+1	+2.9	+48	+83	+23	87	97	98	37	35.5
MARB	RE	\$EN	\$W	\$F	\$G	\$B	Dam Production		
+3.5	+6.4	-3.30	+28.78	+26.99	+30.44	+62.12	1-97		

## 78 HD DUNN LEGEND 3165

Birth Date: 4-20-2013 Bull 17638228 Tattoo: 3165  
 OCC Legend 616L #+OCC Emblazon 854E  
 HD Dunn Legend 7009 OCC Blackbird 632J  
 15934785 HD Dunn Beauty 5128 #Hyline Right Time 338  
 HD Dunn Beauty 2374

+HD Dunn Cornerstone 1118 Sitz Traveler 7594  
 HD Dunn Erica 4611 #Cedar Hills Lass 0091  
 #14851128 Cedar Hills Erica 2224 #RR Hero 9513  
 Cedar Hills Erica 0038

SIRE EPD
CED +9
BEPD -2
WEPD +39
YEPD +68
MILK +20
DAM EPD
CED -4
BEPD +4.7
WEPD +31
YEPD +53
MILK +20

CED	BEPD	WEPD	YEPD	MILK	Actual BW	205 Ratio	365 Ratio	PAP SCORE	Actual Scrotal
+3	+2.4	+40	+65	+20	86	111	103	53	38
MARB	RE	\$EN	\$W	\$F	\$G	\$B	Dam Production		
+3.0	+2.9	+9.79	+29.90	+8.90	+25.13	+59.14	8-105		

## 75 HD DUNN BLACK CEDAR 3214

Birth Date: 4-22-2013 Bull 17641866 Tattoo: 3214  
 #CH Quantum 6247 #CH Quantum 3330  
 Cole Creek Black Cedar 46P CH Blackbird 0136  
 14496765 Cole Creek Clova Juanada 67 #AAR Windy Ridge 523  
 Cole Creek Clova Juanada 811

Hyline Ambush 145 +Hyline Ambush 6700  
 HD Dunn Dixie Erica 9450 Hyline Blackcap 219  
 16492858 +HD Dunn Dixie Erica 8346 #CH 054 Rito 0100  
 #Dixie Erica of CH 6180

SIRE EPD
CED +8
BEPD +2.4
WEPD +50
YEPD +89
MILK +22
DAM EPD
CED -3
BEPD +5.1
WEPD +40
YEPD +77
MILK +21

CED	BEPD	WEPD	YEPD	MILK	Actual BW	205 Ratio	365 Ratio	PAP SCORE	Actual Scrotal
+1	+4.7	+48	+87	+22	96	106	103	47	34.5
MARB	RE	\$EN	\$W	\$F	\$G	\$B	Dam Production		
+4.3	+5.1	-1.12	+25.37	+32.07	+28.79	+68.42	3-98		

## 79 HD DUNN RITO 3349

Birth Date: 5-13-2013 Bull 17638246 Tattoo: 3349  
 Hyline Rito 478 Hyline Rito 498  
 Hyline Rito 18 Hyline Miss Kemm 875  
 16254930 Hyline Diamond Lil 303 #Hyline Right Time 338  
 Hyline Diamond Lil 447

#+Boyd New Day 8005 #AAR New Trend  
 HD Dunn Blackbird 8095 SVF Forever Lady 57D  
 16228642 #HD Dunn Blackbird 5130 #Hyline Right Time 338  
 HD Dunn Blackbird 2126

SIRE EPD
CED -2
BEPD +4.4
WEPD +52
YEPD +101
MILK +14
DAM EPD
CED +7
BEPD +1.7
WEPD +58
YEPD +95
MILK +26

CED	BEPD	WEPD	YEPD	MILK	Actual BW	205 Ratio	365 Ratio	PAP SCORE	Actual Scrotal
+2	+3.4	+55	+95	+20	89	106	100	42	36.5
MARB	RE	\$EN	\$W	\$F	\$G	\$B	Dam Production		
+0.7	+2.7	-2.12	+30.91	+38.94	+10.99	+58.04	2-106		

## 76 HD DUNN BLACK CEDAR 3215

Birth Date: 4-22-2013 Bull 17641879 Tattoo: 3215  
 #CH Quantum 6247 #CH Quantum 3330  
 Cole Creek Black Cedar 46P CH Blackbird 0136  
 14496765 Cole Creek Clova Juanada 67 #AAR Windy Ridge 523  
 Cole Creek Clova Juanada 811

Hyline Right Time 745 Hyline Right Time 891  
 HD Dunn Lass 8391 R&R Pride Eileen 745  
 16228710 HD Dunn Lass 2070 #BCC Bushwacker 41-93  
 #HD Dunn Lass 8078

SIRE EPD
CED +8
BEPD +2.4
WEPD +50
YEPD +89
MILK +22
DAM EPD
CED +1
BEPD +3.3
WEPD +36
YEPD +60
MILK +24

CED	BEPD	WEPD	YEPD	MILK	Actual BW	205 Ratio	365 Ratio	PAP SCORE	Actual Scrotal
+2	+3.9	+43	+75	+23	96	102	101	40	39.5
MARB	RE	\$EN	\$W	\$F	\$G	\$B	Dam Production		
+4.4	+4.4	+3.14	+27.31	+19.47	+28.36	+66.24	4-101		

## 80 HD DUNN RITO 3403

Birth Date: 5-21-2013 Bull 17638253 Tattoo: 3403  
 Hyline Rito 478 Hyline Rito 498  
 Hyline Rito 18 Hyline Miss Kemm 875  
 16254930 Hyline Diamond Lil 303 #Hyline Right Time 338  
 Hyline Diamond Lil 447

#+Boyd New Day 8005 #AAR New Trend  
 HD Dunn Merle 8221 SVF Forever Lady 57D  
 16228671 HD Dunn Merle 2588 Rito 8K4 of 5028 Rito 3X25  
 Merle of CH 0035

SIRE EPD
CED -2
BEPD +4.4
WEPD +52
YEPD +101
MILK +14
DAM EPD
CED +4
BEPD +2.6
WEPD +51
YEPD +90
MILK +22

CED	BEPD	WEPD	YEPD	MILK	Actual BW	205 Ratio	365 Ratio	PAP SCORE	Actual Scrotal
+1	+3.5	+52	+93	+18	86	104	99	42	38.5
MARB	RE	\$EN	\$W	\$F	\$G	\$B	Dam Production		
+2.3	+2.0	+1.70	+28.04	+37.84	+19.27	+58.12	3-107		

# 81 HD DUNN RAINMAKER 3336

Birth Date: 5-10-2013 Bull 17715219 Tattoo: 3336

Sitz Rainmaker 8276

HD Dunn Rainmaker 1250

17092402 HD Dunn Blackbird 3062

#+HA Image Maker 0415

HD Dunn Dixie Erica 8014

16228618 HD Dunn Dixie Erica 6410

#Sitz Rainmaker 6169

#Sitz Erica Everelda 3172

#+OCC Great Plains 943G

HD Dunn Blackbird 1274

#Hero 6267 of RR 2418

HA Rito Blackcap 9038

#+OCC Great Plains 943G

HD Dunn Dixie Erica 3305

SIRE	EPD
CED	+3
BE PD	+2.5
WE PD	+48
YE PD	+90
MILK	+28
DAM	EPD
CED	+6
BE PD	+1.8
WE PD	+56
YE PD	+91
MILK	+27

CED	BE PD	WE PD	YE PD	MILK	Actual BW	205 Ratio	365 Ratio	PAP SCORE	Actual Scrotal
+5	+1.8	+52	+91	+27	84	103	102	42	39
MARB	RE	\$EN	\$W	\$F	\$G	\$B	Dam Production		
+38	+03	-11.87	+33.70	+35.23	+20.75	+68.70	4-101		

# 85 HD DUNN GAME DAY 3064

Birth Date: 3-22-2013 Bull 17715185 Tattoo: 3064

#+GDAR Game Day 449

HD Dunn Game Day 1171

17094705 HD Dunn Rev Rose 2247

#+Boyd New Day 8005

#GDAR Miss Wix 474

HD Dunn Cornerstone 9499

HD Dunn Rev Rose 7299

#CRA Bextor 872 5205 608

HD Dunn Merle 1308

17092774 HD Dunn Merle 8148

#BAR Ext Traveler 205

Cra Lady Jaye 608 498 S Easy

#BC Marathon 7022

HD Dunn Merle 4245

SIRE	EPD
CED	+9
BE PD	-8
WE PD	+48
YE PD	+75
MILK	+21
DAM	EPD
CED	+10
BE PD	-9
WE PD	+51
YE PD	+85
MILK	+23

CED	BE PD	WE PD	YE PD	MILK	Actual BW	205 Ratio	365 Ratio	PAP SCORE	Actual Scrotal
+10	-1.0	+47	+74	+22	72	97	91	39	36
MARB	RE	\$EN	\$W	\$F	\$G	\$B	Dam Production		
+42	+36	+1.73	+37.84	+16.37	+30.33	+43.84	1-97		

# 82 HD DUNN RAINMAKER 3343

Birth Date: 5-11-2013 Bull 17715372 Tattoo: 3343

Sitz Rainmaker 8276

HD Dunn Rainmaker 1250

17092402 HD Dunn Blackbird 3062

#+Boyd New Day 8005

HD Dunn Elgona 7280

15934876 HD Dunn Elgona 1065

#Sitz Rainmaker 6169

#Sitz Erica Everelda 3172

#+OCC Great Plains 943G

HD Dunn Blackbird 1274

#AAR New Trend

SVF Forever Lady 57D

#+OCC Great Plains 943G

HD Dunn Elgona 9371

SIRE	EPD
CED	+3
BE PD	+2.5
WE PD	+48
YE PD	+90
MILK	+28
DAM	EPD
CED	+6
BE PD	+1.8
WE PD	+41
YE PD	+81
MILK	+22

CED	BE PD	WE PD	YE PD	MILK	Actual BW	205 Ratio	365 Ratio	PAP SCORE	Actual Scrotal
+5	+2.0	+43	+87	+25	84	97	104	35	33
MARB	RE	\$EN	\$W	\$F	\$G	\$B	Dam Production		
+32	+19	-7.56	+24.92	+34.57	+19.81	+64.52	5-100		

# 86 SBA GAME DAY 021

Birth Date: 4-17-2013 Bull 17655849 Tattoo: 021

#+Boyd New Day 8005

GDAR Game Day 449

#14691231 #GDAR Miss Wix 474

#AAR New Trend

SVF Forever Lady 57D

#Tehama Band 207

GDAR Miss Wix 749

+SAV Navigator 7124

Heritage blackbird 1120

17087459 +Blackbird of Holiday 2088

#SAV Net Worth 4200

+CHAMPION HILL Georgina 2121

#Famous 7001

+Donamere Blackbird 104

SIRE	EPD
CED	+9
BE PD	-3
WE PD	+51
YE PD	+95
MILK	+26
DAM	EPD
CED	+5
BE PD	+2.9
WE PD	+49
YE PD	+86
MILK	+23

CED	BE PD	WE PD	YE PD	MILK	Actual BW	205 Ratio	365 Ratio	PAP SCORE	Actual Scrotal
+11	-.5	+52	+92	+25	62	104	102	35	36
MARB	RE	\$EN	\$W	\$F	\$G	\$B	Dam Production		
+52	+71	-7.23	+38.38	+36.53	+32.55	+72.28	2-100		

# 83 HD DUNN GREAT PLAINS 3393

Birth Date: 5-18-2013 Bull 17715517 Tattoo: 3393

#+OCC Great Plains 943G

HD Dunn Great Plains 1293

17092405 HD Dunn Erica 6049

#+Boyd New Day 8005

HD Dunn Lass 6180

#15633487 HD Dunn Lass 3439

#N Bar Emulation EXT

Dixie Erica of CH 1019

#Connely Onward

HD Dunn Erica 4074

#AAR New Trend

SVF Forever Lady 57D

Rito 8K4 of 5028 Rito 3X25

+HD Dunn Lass 0065

SIRE	EPD
CED	+4
BE PD	+2.5
WE PD	+49
YE PD	+85
MILK	+23
DAM	EPD
CED	+4
BE PD	+2.7
WE PD	+58
YE PD	+98
MILK	+19

CED	BE PD	WE PD	YE PD	MILK	Actual BW	205 Ratio	365 Ratio	PAP SCORE	Actual Scrotal
+8	+9	+52	+88	+21	69	101	97	46	38
MARB	RE	\$EN	\$W	\$F	\$G	\$B	Dam Production		
+29	+50	-2.90	+34.49	+31.37	+23.85	+65.84	6-105		

# 87 HD DUNN GAME DAY 3253

Birth Date: 4-25-2013 Bull 17638596 Tattoo: 3253

#+Boyd New Day 8005

GDAR Game Day 449

#14691231 #GDAR Miss Wix 474

#AAR New Trend

SVF Forever Lady 57D

#Tehama Band 207

GDAR Miss Wix 749

Sinclair Mountain Pass 4P138

HD Dunn Primrose 0230

16794782 HD Dunn Primrose 2216

#N Bar Prime Time D806

N Bar Kinochtry Beauty V1490

#GDAR Royce 5140

HD Dunn Primrose 8094

SIRE	EPD
CED	+9
BE PD	-3
WE PD	+51
YE PD	+95
MILK	+26
DAM	EPD
CED	-2
BE PD	+2.9
WE PD	+41
YE PD	+80
MILK	+24

CED	BE PD	WE PD	YE PD	MILK	Actual BW	205 Ratio	365 Ratio	PAP SCORE	Actual Scrotal
+2	+2.0	+48	+92	+25	89	106	110	37	34.5
MARB	RE	\$EN	\$W	\$F	\$G	\$B	Dam Production		
+46	+54	-5.08	+32.67	+38.56	+23.34	+60.84	2-105		

# 84 HD DUNN GAME DAY 3356

Birth Date: 5-14-2013 Bull 17672393 Tattoo: 3356

#+GDAR Game Day 449

179 Game Day RBA 551

16859820 576 Miss Alliance RBA 179

HD Dunn Magnitude 8026

HD Dunn Black Miss 0469

17035460 HD Dunn Black Miss 6322

#+Boyd New Day 8005

#GDAR Miss Wix 474

#KMK Alliance 6595 187

#224 Miss New Level Rba 576

#OCC Magnitude 805M

HD Dunn Erica 6438

#+Boyd New Day 8005

HD Dunn Black Miss 9707

SIRE	EPD
CED	+6
BE PD	+9
WE PD	+51
YE PD	+88
MILK	+24
DAM	EPD
CED	+3
BE PD	+2.6
WE PD	+47
YE PD	+88
MILK	+25

CED	BE PD	WE PD	YE PD	MILK	Actual BW	205 Ratio	365 Ratio	PAP SCORE	Actual Scrotal
+8	+1	+53	+95	+24	69	109	112	40	35
MARB	RE	\$EN	\$W	\$F	\$G	\$B	Dam Production		
+28	+33	-9.70	+34.61	+39.96	+18.16	+61.69	2-111		

# 88 HD DUNN GAME DAY 3114

Birth Date: 4-13-2013 Bull 17638225 Tattoo: 3114

#+Boyd New Day 8005

GDAR Game Day 449

#14691231 #GDAR Miss Wix 474

#AAR New Trend

SVF Forever Lady 57D

#Tehama Band 207

GDAR Miss Wix 749

#OCC Magnitude 805M

HD Dunn Blackbird 9016

16492742 #HD Dunn Blackbird 7006

#+OCC Emblazon 854E

OCC Polyanna 878G

#RC Black Cigar 0293

#HD Dunn Blackbird 5130

SIRE	EPD
CED	+9
BE PD	-3
WE PD	+51
YE PD	+95
MILK	+26
DAM	EPD
CED	+6
BE PD	+1.1
WE PD	+49
YE PD	+75
MILK	+15

CED	BE PD	WE PD	YE PD	MILK	Actual BW	205 Ratio	365 Ratio	PAP SCORE	Actual Scrotal
+9	-.6	+53	+87	+21	75	103	100	42	37.5
MARB	RE	\$EN	\$W	\$F	\$G	\$B	Dam Production		
+25	+85	+4.6	+40.70	+29.60	+25.19	+52.79	3-96		

### 89 HD DUNN GAME DAY 3187

Birth Date: 4-22-2013 Bull 17638232 Tattoo: 3187  
 #+Boyd New Day 8005 #AAR New Trend  
 GDAR Game Day 449 SVF Forever Lady 57D  
 #+14691231 #GDAR Miss Wix 474 #Tehama Band 207  
 GDAR Miss Wix 749

Sitz Rainmaker 8276 #Sitz Rainmaker 6169  
 HD Dunn Blackbird 0397 #Sitz Erica Everelda 3172  
 16794825 HD Dunn Blackbird 0427 +E&b Ext 811  
 HD Dunn Blackbird 6323

SIRE EPD	
CED	+9
BEPD	-3
WEPD	+51
YEPD	+95
MILK	+26
DAM EPD	
CED	+0
BEPD	+4.4
WEPD	+43
YEPD	+82
MILK	+24

CED	BEPD	WEPD	YEPD	MILK	Actual BW	205 Ratio	365 Ratio	PAP SCORE	Actual Scrotal
+5	+1.8	+48	+95	+25	80	103	112	40	37.5
MARB	RE	\$EN	\$W	\$F	\$G	\$B	Dam Production		
+4.5	+3.4	-7.10	+31.15	+42.53	+24.89	+62.91	2-105		

### 93 HD DUNN GAME DAY 3048

Birth Date: 3-13-2013 Bull 17638572 Tattoo: 3048  
 #+Boyd New Day 8005 #AAR New Trend  
 GDAR Game Day 449 SVF Forever Lady 57D  
 #+14691231 #GDAR Miss Wix 474 #Tehama Band 207  
 GDAR Miss Wix 749

HD Dunn Rainmaker 9302 Sitz Rainmaker 8276  
 HD Dunn Erica 1380 HD Dunn Blackbird 2206  
 17092367 #HD Dunn Erica 4611 +HD Dunn Cornerstone 1118  
 Cedar Hills Erica 2224

SIRE EPD	
CED	+9
BEPD	-3
WEPD	+51
YEPD	+95
MILK	+26
DAM EPD	
CED	-9
BEPD	+6.9
WEPD	+39
YEPD	+66
MILK	+19

CED	BEPD	WEPD	YEPD	MILK	Actual BW	205 Ratio	365 Ratio	PAP SCORE	Actual Scrotal
+3	+2.6	+42	+78	+23	73	90	96	39	36
MARB	RE	\$EN	\$W	\$F	\$G	\$B	Dam Production		
+4.2	+5.2	+2.47	+29.12	+23.64	+29.08	+50.58	1-90		

### 90 HD DUNN GAME DAY 3279 (DDP)

Birth Date: 4-26-2013 Bull 17638639 Tattoo: 3279  
 #+Boyd New Day 8005 #AAR New Trend  
 GDAR Game Day 449 SVF Forever Lady 57D  
 #+14691231 #GDAR Miss Wix 474 #Tehama Band 207  
 GDAR Miss Wix 749

N Bar Explosion V1495 #N Bar Explosion  
 HD Dunn Merle 0624 #N Bar Kinochtry Beauty 4317  
 13689993 CH Merle 4278 Vermilion Traveler 1007  
 Merle of CH 2006

SIRE EPD	
CED	+9
BEPD	-3
WEPD	+51
YEPD	+95
MILK	+26
DAM EPD	
CED	-3
BEPD	+2.5
WEPD	+29
YEPD	+50
MILK	+23

CED	BEPD	WEPD	YEPD	MILK	Actual BW	205 Ratio	365 Ratio	PAP SCORE	Actual Scrotal
+1	+2.1	+42	+75	+25	92	103	103	41	37
MARB	RE	\$EN	\$W	\$F	\$G	\$B	Dam Production		
+3.5	+4.1	-7.4	+30.45	+19.94	+23.72	+46.56	10-101		

### 94 HD DUNN MOUNTAIN PASS 3289

Birth Date: 4-27-2013 Bull 17638239 Tattoo: 3289  
 #N Bar Prime Time D806 #Gardens Prime Time  
 Sinclair Mountain Pass 4P138 N Bar Miss Emulous A404  
 15081884 N Bar Kinochtry Beauty V1490 +OCC Exodus 712E  
 #N Bar Kinochtry Beauty 4317

N Bar Explosion V1495 #N Bar Explosion  
 HD Dunn Merle 3531 #N Bar Kinochtry Beauty 4317  
 #14499278 HD Dunn Merle 0410 Rito 8K4 of 5028 Rito 3X25  
 HD Dunn Merle 6329

SIRE EPD	
CED	-1
BEPD	+1.5
WEPD	+46
YEPD	+88
MILK	+24
DAM EPD	
CED	-6
BEPD	+3.3
WEPD	+39
YEPD	+66
MILK	+26

CED	BEPD	WEPD	YEPD	MILK	Actual BW	205 Ratio	365 Ratio	PAP SCORE	Actual Scrotal
-6	+3.5	+45	+76	+25	95	110	106	34	40.5
MARB	RE	\$EN	\$W	\$F	\$G	\$B	Dam Production		
+5.2	-.06	+10.82	+41.49	+19.74	+18.98	+55.77	9-106		

### 91 HD DUNN GAME DAY 3020

Birth Date: 3-4-2013 Bull 17638213 Tattoo: 3020  
 #+Boyd New Day 8005 #AAR New Trend  
 GDAR Game Day 449 SVF Forever Lady 57D  
 #+14691231 #GDAR Miss Wix 474 #Tehama Band 207  
 GDAR Miss Wix 749

Sitz Rainmaker 8276 #Sitz Rainmaker 6169  
 HD Dunn Blackbird 1122 #Sitz Erica Everelda 3172  
 17092321 #HD Dunn Blackbird 6570 Cole Creek Directive 18P  
 HD Dunn Blackbird 3062

SIRE EPD	
CED	+9
BEPD	-3
WEPD	+51
YEPD	+95
MILK	+26
DAM EPD	
CED	+6
BEPD	+1.6
WEPD	+44
YEPD	+84
MILK	+25

CED	BEPD	WEPD	YEPD	MILK	Actual BW	205 Ratio	365 Ratio	PAP SCORE	Actual Scrotal
+9	-.2	+46	+87	+26	68	97	99	38	37
MARB	RE	\$EN	\$W	\$F	\$G	\$B	Dam Production		
+3.8	+6.6	-5.10	+35.58	+33.07	+27.16	+57.92	1-97		



HD Dunn Mountain Pass 3019 - Lot 95

### 92 HD DUNN GAME DAY 3148

Birth Date: 4-17-2013 Bull 17638227 Tattoo: 3148  
 #+Boyd New Day 8005 #AAR New Trend  
 GDAR Game Day 449 SVF Forever Lady 57D  
 #+14691231 #GDAR Miss Wix 474 #Tehama Band 207  
 GDAR Miss Wix 749

#+BT Right Time 24J #+Leachman Right Time  
 HD Dunn Blackbird 9337 Sitz Everelda Entense 1905  
 16499627 HD Dunn Blackbird 2121 #Bon View New Design 878  
 #CH Blackbird C4352

SIRE EPD	
CED	+9
BEPD	-3
WEPD	+51
YEPD	+95
MILK	+26
DAM EPD	
CED	+4
BEPD	+2.1
WEPD	+44
YEPD	+76
MILK	+24

CED	BEPD	WEPD	YEPD	MILK	Actual BW	205 Ratio	365 Ratio	PAP SCORE	Actual Scrotal
+9	-.2	+45	+82	+25	75	97	98	52	38.5
MARB	RE	\$EN	\$W	\$F	\$G	\$B	Dam Production		
+4.4	+4.3	-3.80	+34.19	+27.20	+28.25	+54.34	3-103		

### 95 HD DUNN MOUNTAIN PASS 3019

Birth Date: 3-4-2013 Bull 17638212 Tattoo: 3019  
 #N Bar Prime Time D806 #Gardens Prime Time  
 Sinclair Mountain Pass 4P138 N Bar Miss Emulous A404  
 15081884 N Bar Kinochtry Beauty V1490 +OCC Exodus 712E  
 #N Bar Kinochtry Beauty 4317

#CRA Bextor 872 5205 608 #BAR Ext Traveler 205  
 HD Dunn Merle 1188 Cra Lady Jaye 608 498 S Easy  
 17092827 HD Dunn Merle 1449 N Bar Explosion V1495  
 Merle of CH 0035

SIRE EPD	
CED	-1
BEPD	+1.5
WEPD	+46
YEPD	+88
MILK	+24
DAM EPD	
CED	+6
BEPD	+1.1
WEPD	+42
YEPD	+71
MILK	+24

CED	BEPD	WEPD	YEPD	MILK	Actual BW	205 Ratio	365 Ratio	PAP SCORE	Actual Scrotal
+3	+1.4	+41	+74	+24	78	96	94	39	39
MARB	RE	\$EN	\$W	\$F	\$G	\$B	Dam Production		
+5.9	+2.5	+1.91	+32.15	+19.19	+29.36	+57.97	1-96		



# 96 HD Dunn Mountain Pass 3027

Birth Date: 3-5-2013 Bull 17638217 Tattoo: 3027  
 #N Bar Prime Time D806 #Gardens Prime Time  
**Sinclair Mountain Pass 4P138** N Bar Miss Emulous A404  
 15081884 N Bar Kinochtry Beauty V1490 +OCC Exodus 712E  
 #N Bar Kinochtry Beauty 4317  
 #+GDAR Game Day 449 #+Boyd New Day 8005  
**HD Dunn Merle 1191** #GDAR Miss Wix 474  
 17443455 HD Dunn Merle 7026 #RC Black Cigar 0293  
 HD Dunn Merle 5089

SIRE EPD
CED -1
BEPD +1.5
WEPD +46
YEPD +88
MILK +24
DAM EPD
CED +10
BEPD -1.2
WEPD +40
YEPD +78
MILK +20

CED	BEPD	WEPD	YEPD	MILK	Actual BW	205 Ratio	365 Ratio	PAP SCORE	Actual Scrotal
+2	+6	+42	+81	+22	76	96	96	46	37
MARB	RE	\$EN	\$W	\$F	\$G	\$B	Dam Production		
+0.61	+0.42	+2.63	+31.67	+27.40	+29.14	+62.04	1-96		

# 100 SBA PIONEER 024

Birth Date: 4-8-2013 Bull 17655851 Tattoo: 024  
 #SAV Final Answer 0035 #Sitz Traveler 8180  
**SAV Pioneer 7301** SAV Emulous 8145  
 15688392 SAV Blackbird 5297 #+Boyd New Day 8005  
 SAV Blackbird 1082  
 #Sitz Alliance 7544 #Sitz Alliance 6595  
**HD Dunn Erica Lassie 9316** Sitz Pride 2561  
 16507473 +HD Dunn Erica Lassie 1182 +GDAR SVF Traveler 228D  
 Erica Lassie of CH 5122

SIRE EPD
CED +3
BEPD +2.0
WEPD +61
YEPD +110
MILK +32
DAM EPD
CED +8
BEPD +0
WEPD +50
YEPD +83
MILK +23

CED	BEPD	WEPD	YEPD	MILK	Actual BW	205 Ratio	365 Ratio	PAP SCORE	Actual Scrotal
+11	-1.8	+54	+93	+27	59	96	96	39	39
MARB	RE	\$EN	\$W	\$F	\$G	\$B	Dam Production		
+0.29	+0.57	-9.89	+42.45	+36.83	+22.27	+71.25	3-99		

# 97 HD Dunn Legend 3294

Birth Date: 4-28-2013 Bull 17638240 Tattoo: 3294  
 OCC Legend 616L #+OCC Emblazon 854E  
**HD Dunn Legend 7009** OCC Blackbird 632J  
 15934785 HD Dunn Beauty 5128 #Hylime Right Time 338  
 HD Dunn Beauty 2374  
 CAR 461 Tracker 6106 CAR Tracker 461  
**HD Dunn Kate 8506** Car Miss Roberta 068  
 16228717 #HD Dunn Kate 3493 #+OCC Great Plains 943G  
 HD Dunn Kate 0618

SIRE EPD
CED +9
BEPD -2
WEPD +39
YEPD +68
MILK +20
DAM EPD
CED -1
BEPD +4.1
WEPD +4.3
YEPD +76
MILK +25

CED	BEPD	WEPD	YEPD	MILK	Actual BW	205 Ratio	365 Ratio	PAP SCORE	Actual Scrotal
+6	+1.4	+40	+71	+23	79	97	97	40	36
MARB	RE	\$EN	\$W	\$F	\$G	\$B	Dam Production		
+0.34	+0.49	+3.35	+30.89	+16.03	+27.86	+63.30	4-97		

# 101 HD Dunn Upward 3410

Birth Date: 5-26-2013 Bull 17715523 Tattoo: 3410  
 #Sitz Upward 307R #Connealy Onward  
**HD Dunn Upward 1194** Sitz Henrietta Pride 81M  
 17094748 HD Dunn Dixie Erica 4556 #+OCC Great Plains 943G  
 #HD Dunn Dixie Erica 0059  
 #SAV 8180 Traveler 004 #Sitz Traveler 8180  
**HD Dunn Blackbird 6264** #Boyd Forever Lady 8003  
 15633489 #HD Dunn Blackbird 6330 #GDAR Quantum 1245  
 #CH Blackbird 2180

SIRE EPD
CED +1
BEPD +4.2
WEPD +62
YEPD +110
MILK +28
DAM EPD
CED -4
BEPD +5.2
WEPD +47
YEPD +81
MILK +23

CED	BEPD	WEPD	YEPD	MILK	Actual BW	205 Ratio	365 Ratio	PAP SCORE	Actual Scrotal
-4	+5.8	+56	+98	+26	101	109	106	36	36.5
MARB	RE	\$EN	\$W	\$F	\$G	\$B	Dam Production		
+0.59	+0.19	-10.58	+26.41	+42.39	+25.98	+81.22	6-104		

# 98 HD Dunn Game Day 3345

Birth Date: 5-12-2013 Bull 17770407 Tattoo: 3345  
 #+GDAR Game Day 449 #+Boyd New Day 8005  
**HD Dunn Game Day 1195** #GDAR Miss Wix 474  
 17094718 HD Dunn Merle 0465 JR Ambush 250F  
 CH Merle 4302  
 #Sinclair Network 1U7 #Papa Universe 515  
**HD Dunn Blackbird 5542** Papa Envious Blackbird 8832  
 16033219 #Blackbird of CH 0110 #CH Stackor 7040  
 Blackbird of CH 8045

SIRE EPD
CED +1
BEPD +3.4
WEPD +49
YEPD +81
MILK +20
DAM EPD
CED +4
BEPD +3.2
WEPD +29
YEPD +51
MILK +20

CED	BEPD	WEPD	YEPD	MILK	Actual BW	205 Ratio	365 Ratio	PAP SCORE	Actual Scrotal
+3	+3.3	+39	+66	+20	63	109	100	41	36.5
MARB	RE	\$EN	\$W	\$F	\$G	\$B	Dam Production		
+0.22	+0.52	+7.54	+24.18	+10.53	+25.69	+35.71	6-99		

# 102 HD Dunn Bextor 3065

Birth Date: 3-23-2013 Bull 17715193 Tattoo: 3065  
 #CRA Bextor 872 5205 608 #BAR Ext Traveler 205  
**HD Dunn Bextor 1266** Cra Lady Jaye 608 498 S Easy  
 17092794 #HD Dunn Lass 6180 #+Boyd New Day 8005  
 HD Dunn Lass 3439  
 #+GDAR Game Day 449 #+Boyd New Day 8005  
**HD Dunn Dixie Erica 1226** #GDAR Miss Wix 474  
 17094719 HD Dunn Dixie Erica 0321 +E&B Ext 811  
 #Dixie Erica of CH 0086

SIRE EPD
CED +7
BEPD +1.1
WEPD +65
YEPD +112
MILK +25
DAM EPD
CED -4
BEPD +5.4
WEPD +47
YEPD +77
MILK +24

CED	BEPD	WEPD	YEPD	MILK	Actual BW	205 Ratio	365 Ratio	PAP SCORE	Actual Scrotal
+0	+3.4	+56	+94	+24	79	104	103	40	35
MARB	RE	\$EN	\$W	\$F	\$G	\$B	Dam Production		
+0.38	+0.59	-9.27	+31.34	+37.12	+30.00	+63.60	1-104		

# 99 SBA 001 GAME DAY 028

Birth Date: 4-15-2013 Bull 17655854 Tattoo: 028  
 #+GDAR Game Day 449 #+Boyd New Day 8005  
**179 Game Day RBA 551** #GDAR Miss Wix 474  
 16859820 576 Miss Alliance RBA 179 #KMK Alliance 6595 187  
 #224 Miss New Level Rba 576  
 #Schurrtop MC 2500 #Schurrtop MC  
**TLC 2500 Dawn 9235** Schurrtop RS 1413 2153  
 16771034 TLC Phantasia's Dawn 536 #Bon View New Design 1407  
 TLC Phantasias Darla 110

SIRE EPD
CED +6
BEPD +9
WEPD +51
YEPD +88
MILK +24
DAM EPD
CED +6
BEPD +1.9
WEPD +40
YEPD +69
MILK +19

CED	BEPD	WEPD	YEPD	MILK	Actual BW	205 Ratio	365 Ratio	PAP SCORE	Actual Scrotal
+6	+1.6	+41	+72	+22	78	89	88	40	40
MARB	RE	\$EN	\$W	\$F	\$G	\$B	Dam Production		
+0.29	+0.28	+2.56	+29.09	+16.76	+25.60	+48.26	3-94		



# 103 HD DUNN RITO 3369

Birth Date: 5-16-2013 Bull 17638249 Tattoo: 3369  
 Hyline Rito 478

## Hyline Rito 18

16254930 Hyline Diamond Lil 303

HD Dunn New Day 6110

## HD Dunn Georgina 8454

16228725 Shoshone Georgina A436

Hyline Rito 498  
 Hyline Miss Kemm 875  
 #Hyline Right Time 338  
 Hyline Diamond Lil 447

#+Boyd New Day 8005  
 HD Dunn Pride 2158  
 Shoshone Prince 6135  
 Shoshone Georgina A419

SIRE	EPD
CED	-2
BEPD	+4.4
WEPD	+52
YEPD	+101
MILK	+14
DAM	EPD
CED	+7
BEPD	+2
WEPD	+38
YEPD	+61
MILK	+23

CED	BEPD	WEPD	YEPD	MILK	Actual BW	205 Ratio	365 Ratio	PAP SCORE	Actual Scrotal
+3	+1.9	+48	+83	+19	83	107	101	40	36
MARB	RE	\$EN	\$W	\$F	\$G	\$B	Dam Production		
+1.9	-.07	+5.08	+33.21	+26.99	+15.24	+44.15	3-99		

# 107 HD DUNN GAME DAY 3311

Birth Date: 4-30-2013 Bull 17638632 Tattoo: 3311  
 #+Boyd New Day 8005

## GDAR Game Day 449 <sup>REG</sup>

#14691231 #GDAR Miss Wix 474

#AAR New Trend  
 SVF Forever Lady 57D  
 #Tehama Band 207  
 GDAR Miss Wix 749

#N Bar Emulation EXT  
 Dixie Erica of CH 1019  
 RTAR Pro Design 907  
 HD Dunn Blackbird 9250

## HD Dunn Blackbird 3034

14499133 HD Dunn Blackbird 1007

SIRE	EPD
CED	+9
BEPD	-3
WEPD	+51
YEPD	+95
MILK	+26
DAM	EPD
CED	+2
BEPD	+2.0
WEPD	+42
YEPD	+72
MILK	+25

CED	BEPD	WEPD	YEPD	MILK	Actual BW	205 Ratio	365 Ratio	PAP SCORE	Actual Scrotal
+2	+2.3	+47	+84	+26	95	106	103	42	35
MARB	RE	\$EN	\$W	\$F	\$G	\$B	Dam Production		
+3.8	+6.5	-4.76	+32.75	+28.74	+27.52	+62.04	9-104		

# 104 HD DUNN RITO 3357

Birth Date: 5-15-2013 Bull 17638247 Tattoo: 3357  
 Hyline Rito 478

## Hyline Rito 18

16254930 Hyline Diamond Lil 303

CAR 461 Tracker 6106

## HD Dunn Erica Lassie 9354

16492818 HD Dunn Erica Lassie 1228

Hyline Rito 498  
 Hyline Miss Kemm 875  
 #Hyline Right Time 338  
 Hyline Diamond Lil 447

CAR Tracker 461  
 Car Miss Roberta 068  
 +HD Dunn Royce 8327  
 HD Dunn Erica Lassie 6273

SIRE	EPD
CED	-2
BEPD	+4.4
WEPD	+52
YEPD	+101
MILK	+14
DAM	EPD
CED	-1
BEPD	+5.1
WEPD	+43
YEPD	+71
MILK	+21

CED	BEPD	WEPD	YEPD	MILK	Actual BW	205 Ratio	365 Ratio	PAP SCORE	Actual Scrotal
+0	+4.1	+49	+89	+18	83	104	105	40	38
MARB	RE	\$EN	\$W	\$F	\$G	\$B	Dam Production		
+2.7	+1.4	+3.54	+25.11	+34.15	+19.17	+56.52	2-104		

# 108 HD DUNN GAME DAY 3176

Birth Date: 4-21-2013 Bull 17638229 Tattoo: 3176  
 #+Boyd New Day 8005

## GDAR Game Day 449 <sup>REG</sup>

#14691231 #GDAR Miss Wix 474

#AAR New Trend  
 SVF Forever Lady 57D  
 #Tehama Band 207  
 GDAR Miss Wix 749

#+OCC Magnitude 805M  
 HD Dunn Merle 0160  
 16794759 HD Dunn Merle 2588

SIRE	EPD
CED	+9
BEPD	-3
WEPD	+51
YEPD	+95
MILK	+26
DAM	EPD
CED	-2
BEPD	+3.1
WEPD	+42
YEPD	+71
MILK	+14

CED	BEPD	WEPD	YEPD	MILK	Actual BW	205 Ratio	365 Ratio	PAP SCORE	Actual Scrotal
+4	+1.1	+50	+84	+20	78	105	99	46	36.5
MARB	RE	\$EN	\$W	\$F	\$G	\$B	Dam Production		
+2.8	+5.5	+3.34	+36.79	+27.27	+23.62	+45.43	2-98		

# 105 HD DUNN BLACK CEDAR 3252

Birth Date: 4-25-2013 Bull 17641883 Tattoo: 3252  
 #CH Quantum 6247

## Cole Creek Black Cedar 46P

14496765 Cole Creek Clova Juanada 67

#+HA Image Maker 0415

## HD Dunn Blackbird 8038

16228629 #HD Dunn Blackbird 6570

#CH Quantum 3330  
 CH Blackbird 0136  
 #AAR Windy Ridge 523  
 Cole Creek Clova Juanada 811

#Hero 6267 of RR 2418  
 HA Rito Blackcap 9038  
 Cole Creek Directive 18P  
 HD Dunn Blackbird 3062

SIRE	EPD
CED	+8
BEPD	+2.4
WEPD	+50
YEPD	+89
MILK	+22
DAM	EPD
CED	-1
BEPD	+3.0
WEPD	+57
YEPD	+95
MILK	+35

CED	BEPD	WEPD	YEPD	MILK	Actual BW	205 Ratio	365 Ratio	PAP SCORE	Actual Scrotal
-8	+4.9	+53	+95	+27	102	107	112	45	35.5
MARB	RE	\$EN	\$W	\$F	\$G	\$B	Dam Production		
+1.6	+3.7	-5.89	+32.29	+39.96	+15.78	+70.01	4-111		

# 109 HD DUNN GAME DAY 3193

Birth Date: 4-22-2013 Bull 17638233 Tattoo: 3193  
 #+Boyd New Day 8005

## GDAR Game Day 449 <sup>REG</sup>

#14691231 #GDAR Miss Wix 474

#AAR New Trend  
 SVF Forever Lady 57D  
 #Tehama Band 207  
 GDAR Miss Wix 749

#+OCC Great Plains 943G  
 HD Dunn Blackbird 0222  
 16794778 HD Dunn Blackbird 7431

SIRE	EPD
CED	+9
BEPD	-3
WEPD	+51
YEPD	+95
MILK	+26
DAM	EPD
CED	+6
BEPD	+2.0
WEPD	+41
YEPD	+71
MILK	+22

CED	BEPD	WEPD	YEPD	MILK	Actual BW	205 Ratio	365 Ratio	PAP SCORE	Actual Scrotal
+9	-.1	+47	+82	+24	73	100	99	48	34.5
MARB	RE	\$EN	\$W	\$F	\$G	\$B	Dam Production		
+5.1	+6.8	-.79	+37.57	+26.22	+32.49	+62.57	2-99		

# 106 HD DUNN GAME DAY 3301

Birth Date: 4-29-2013 Bull 17638618 Tattoo: 3301  
 #+Boyd New Day 8005

## GDAR Game Day 449 <sup>REG</sup>

#14691231 #GDAR Miss Wix 474

+HD Dunn Explosion 1230

## HD Dunn Lucy 5320

15183237 Shoshone Lucy 866

#AAR New Trend  
 SVF Forever Lady 57D  
 #Tehama Band 207  
 GDAR Miss Wix 749

N Bar Explosion V1495  
 #Susanna of CH 5060  
 Shoshone Beam 5482  
 Shoshone Lucy 861

SIRE	EPD
CED	+9
BEPD	-3
WEPD	+51
YEPD	+95
MILK	+26
DAM	EPD
CED	-6
BEPD	+3.3
WEPD	+30
YEPD	+52
MILK	+22

CED	BEPD	WEPD	YEPD	MILK	Actual BW	205 Ratio	365 Ratio	PAP SCORE	Actual Scrotal
-3	+2.9	+47	+84	+25	89	107	105	42	36.5
MARB	RE	\$EN	\$W	\$F	\$G	\$B	Dam Production		
+5.8	+5.4	+9.07	+43.46	+28.74	+29.79	+42.38	6-102		

# 110 HD DUNN GAME DAY 3229

Birth Date: 4-23-2013 Bull 17638627 Tattoo: 3229  
 #+Boyd New Day 8005

## GDAR Game Day 449 <sup>REG</sup>

#14691231 #GDAR Miss Wix 474

#AAR New Trend  
 SVF Forever Lady 57D  
 #Tehama Band 207  
 GDAR Miss Wix 749

#GDAR Traveler 8180  
 HD Dunn Merle 4155  
 14851026 HD Dunn Merle 0465

SIRE	EPD
CED	+9
BEPD	-3
WEPD	+51
YEPD	+95
MILK	+26
DAM	EPD
CED	+4
BEPD	+1.5
WEPD	+37
YEPD	+61
MILK	+20

CED	BEPD	WEPD	YEPD	MILK	Actual BW	205 Ratio	365 Ratio	PAP SCORE	Actual Scrotal
I+7	I+6	I+44	I+78	I+23	89	100	100	43	37.5
MARB	RE	\$EN	\$W	\$F	\$G	\$B	Dam Production		
I+4.1	I+5.0	+9.80	+42.59	+22.68	+27.69	+50.72	7-101		

# 111 HD Dunn Game Day 3317

Birth Date: 5-1-2013 Bull 17638612 Tattoo: 3317  
 #+Boyd New Day 8005 #AAR New Trend  
 GDAR Game Day 449 SVF Forever Lady 57D  
 #+14691231 #GDAR Miss Wix 474 #Tehama Band 207  
 GDAR Miss Wix 749  
 #G 13 Structure #TC Stockman 365  
 HD Dunn Merle 6334 #G 13 Traveler 9428  
 15683506 HD Dunn Merle 0376 N Bar Explosion V1495  
 Merle of CH 6098

SIRE EPD	
CED	+9
BEPD	-3
WEPD	+51
YEPD	+95
MILK	+26
DAM EPD	
CED	+0
BEPD	+3.1
WEPD	+31
YEPD	+46
MILK	+25

CED	BEPD	WEPD	YEPD	MILK	Actual BW	205 Ratio	365 Ratio	PAP SCORE	Actual Scrotal
+8	+1	+41	+69	+26	74	100	97	41	34.5
MARB	RE	\$EN	\$W	\$F	\$G	\$B	Dam Production		
+.36	+.65	+1.55	+36.62	+13.16	+30.25	+52.98	6-101		

# 112 HD Dunn Game Day 3200

Birth Date: 4-22-2013 Bull 17638604 Tattoo: 3200  
 #+Boyd New Day 8005 #AAR New Trend  
 GDAR Game Day 449 SVF Forever Lady 57D  
 #+14691231 #GDAR Miss Wix 474 #Tehama Band 207  
 GDAR Miss Wix 749  
 HD Dunn New Day 6110 #+Boyd New Day 8005  
 HD Dunn Primrose 8390 HD Dunn Pride 2158  
 16228709 HD Dunn Primrose 1092 #SAF Focus of ER  
 HD Dunn Primrose 9550

SIRE EPD	
CED	+9
BEPD	-3
WEPD	+51
YEPD	+95
MILK	+26
DAM EPD	
CED	+8
BEPD	+1.2
WEPD	+35
YEPD	+68
MILK	+26

CED	BEPD	WEPD	YEPD	MILK	Actual BW	205 Ratio	365 Ratio	PAP SCORE	Actual Scrotal
+8	+9	+41	+77	+26	82	96	95	48	34.5
MARB	RE	\$EN	\$W	\$F	\$G	\$B	Dam Production		
+.53	+.48	-1.10	+33.01	+22.88	+31.37	+59.94	3-100		

# 113 HD Dunn Game Day 3212

Birth Date: 4-22-2013 Bull 17638602 Tattoo: 3212  
 #+Boyd New Day 8005 #AAR New Trend  
 GDAR Game Day 449 SVF Forever Lady 57D  
 #+14691231 #GDAR Miss Wix 474 #Tehama Band 207  
 GDAR Miss Wix 749  
 HD Dunn 004 Traveler 7365 #SAV 8180 Traveler 004  
 HD Dunn Blackbird 9409 #+HD Dunn Dixie Erica 1078  
 16492840 HD Dunn Blackbird 6039 #+Boyd New Day 8005  
 HD Dunn Blackbird 4257

SIRE EPD	
CED	+9
BEPD	-3
WEPD	+51
YEPD	+95
MILK	+26
DAM EPD	
CED	+5
BEPD	+2.3
WEPD	+51
YEPD	+84
MILK	+24

CED	BEPD	WEPD	YEPD	MILK	Actual BW	205 Ratio	365 Ratio	PAP SCORE	Actual Scrotal
+11	-.7	+47	+83	+25	68	95	94	38	37
MARB	RE	\$EN	\$W	\$F	\$G	\$B	Dam Production		
+.34	+.51	-3.17	+37.50	+27.48	+23.47	+50.86	2-104		

# 114 SBA Mountain Pass 018

Birth Date: 2-26-2013 Bull 17678943 Tattoo: 018  
 #N Bar Prime Time D806 #Gardens Prime Time  
 Sinclair Mountain Pass 4P138 N Bar Miss Emulous A404  
 15081884 N Bar Kinochtry Beauty V1490 +OCC Exodus 712E  
 #N Bar Kinochtry Beauty 4317  
 #+GDAR Game Day 449 #+Boyd New Day 8005  
 HD Dunn Lass 1268 #GDAR Miss Wix 474  
 17094697 HD Dunn Lass 4412 HD Dunn Cornerstone 9499  
 +HD Dunn Lass 0181

SIRE EPD	
CED	-1
BEPD	+1.5
WEPD	+46
YEPD	+88
MILK	+24
DAM EPD	
CED	+10
BEPD	+0
WEPD	+45
YEPD	+79
MILK	+18

CED	BEPD	WEPD	YEPD	MILK	Actual BW	205 Ratio	365 Ratio	PAP SCORE	Actual Scrotal
+7	-.2	+46	+88	+21	60	96	105	36	35
MARB	RE	\$EN	\$W	\$F	\$G	\$B	Dam Production		
+.54	+.33	+1.30	+33.84	+34.36	+23.95	+61.31	1-96		

**Pick up your bulls or registered heifers within five days of the sale and receive a \$75 credit per bull or heifer. Otherwise, there is free delivery on the bulls and registered heifers to Idaho and adjoining states, including northern Colorado, with total purchases of \$2,500 or more. Animals selling further away will be delivered at cost, guaranteed not to exceed \$275 each.**

# 115 COMMERCIAL BULL 3047

Scrotal - 36  
 PAP - 42

# 116 HD Dunn Great Plains 3379

Birth Date: 5-17-2013 Bull 17715516 Tattoo: 3379  
 #+OCC Great Plains 943G #N Bar Emulation EXT  
 HD Dunn Great Plains 1293 Dixie Erica of CH 1019  
 17092405 HD Dunn Erica 6049 #Connealy Onward  
 HD Dunn Merle 9094 HD Dunn Erica 4074  
 16499682 #HD Dunn Merle 6532  
 #G 13 Structure #TC Stockman 365  
 #G 13 Traveler 9428  
 +Sinclair Network 1U7  
 HD Dunn Merle 8177

SIRE EPD	
CED	+4
BEPD	+2.5
WEPD	+49
YEPD	+85
MILK	+23
DAM EPD	
CED	+0
BEPD	+4.3
WEPD	+37
YEPD	+60
MILK	+21

CED	BEPD	WEPD	YEPD	MILK	Actual BW	205 Ratio	365 Ratio	PAP SCORE	Actual Scrotal
+0	+4.1	+44	+77	+22	90	102	105	38	37
MARB	RE	\$EN	\$W	\$F	\$G	\$B	Dam Production		
+.34	+.40	+.48	+23.47	+21.45	+28.34	+73.67	3-101		



HD Dunn Rising Sun 3021 - Lot 117

# 117 HD Dunn Rising Sun 3021

Birth Date: 3-4-2013 Bull 17638214 Tattoo: 3021  
 OCC Jet Stream 825J #+OCC Emblazon 854E  
 OCC Rising Sun 739R OCC Juanada 968G  
 +15755575 +OCC Dixie Erica 805G +OCC Discovery 918D  
 OCC Dixie Erica 907C  
 Hyline Rito 18 Hyline Rito 478  
 HD Dunn Dixie Erica 1172 Hyline Diamond Lil 303  
 17092327 HD Dunn Dixie Erica 5002 #+OCC Great Plains 943G  
 +HD Dunn Dixie Erica 3032

SIRE EPD	
CED	+5
BEPD	+7
WEPD	+36
YEPD	+67
MILK	+21
DAM EPD	
CED	+4
BEPD	+1.8
WEPD	+45
YEPD	+79
MILK	+17

CED	BEPD	WEPD	YEPD	MILK	Actual BW	205 Ratio	365 Ratio	PAP SCORE	Actual Scrotal
+8	+0	+40	+70	+18	72	102	100	35	36
MARB	RE	\$EN	\$W	\$F	\$G	\$B	Dam Production		
+.07	+.37	+21.97	+43.02	+14.82	+15.19	+36.36	1-102		

Lot 117 was used to breed a group of our heifers.

# 118 HD DUNN RISING SUN 3051

Birth Date: 3-15-2013 Bull 17638221 Tattoo: 3051

OCC Jet Stream 825J #+OCC Emblazon 854E  
 OCC Rising Sun 739R OCC Juanada 968G  
 +15755575 +OCC Dixie Erica 805G +OCC Discovery 918D  
 OCC Dixie Erica 907C

#Rito 054 GDAR #CSU Rito 4114  
 HD Dunn Env Blackbird 1342 #Blackcap Forever 485 GDAR  
 17108190 HD Dunn Env Blackbird 4109 #Hyline Right Time 338  
 HD Dunn Env Blackbird 0126

SIRE	EPD
CED	+5
BEPD	+7
WEPD	+36
YEPD	+67
MILK	+21
DAM	EPD
CED	+2
BEPD	+2.6
WEPD	+34
YEPD	+56
MILK	+24

CED	BEPD	WEPD	YEPD	MILK	Actual BW	205 Ratio	365 Ratio	PAP SCORE	Actual Scrotal
+2	+1.3	+36	+61	+22	74	99	96	42	38
MARB	RE	\$EN	\$W	\$F	\$G	\$B	Dam Production		
+0.7	+4.5	+9.53	+31.34	+6.05	+14.99	+40.76	1-99		

# 122 HD DUNN BEXTOR 3325

Birth Date: 5-6-2013 Bull 17723069 Tattoo: 3325

#BAR Ext Traveler 205 #N Bar Emulation EXT  
 CRA Bextor 872 5205 608 #BAR Queen Traveler 3015  
 #13009379 Cra Lady Jaye 608 498 S Easy #+GAR Sleep Easy 1009  
 HHF 917 Lady 975 498

OCC Legend 616L #+OCC Emblazon 854E  
 HD Dunn Blackbird 7256 OCC Blackbird 632J  
 15937684 HD Dunn Blackbird 6267 #GDAR Quantum 1245  
 CH Blackbird 019

SIRE	EPD
CED	+8
BEPD	+1.5
WEPD	+51
YEPD	+90
MILK	+31
DAM	EPD
CED	+6
BEPD	+2.3
WEPD	+40
YEPD	+63
MILK	+15

CED	BEPD	WEPD	YEPD	MILK	Actual BW	205 Ratio	365 Ratio	PAP SCORE	Actual Scrotal
+3	+3.8	+45	+74	+23	99	100	97	64	35.5
MARB	RE	\$EN	\$W	\$F	\$G	\$B	Dam Production		
+3.9	+5.6	+1.32	+27.84	+17.31	+34.76	+43.34	5-102		



HD Dunn Game Day 3373 - Lot 123

# 119 HD DUNN UPWARD 3377

Birth Date: 5-17-2013 Bull 17770408 Tattoo: 3377

#Sitz Upward 307R #Connealy Onward  
 HD Dunn Upward 1194 Sitz Henrietta Pride 81M  
 17094748 HD Dunn Dixie Erica 4556 #+OCC Great Plains 943G  
 +HD Dunn Dixie Erica 0059

#+HA Image Maker 0415 #Hero 6267 of RR 2418  
 HD Dunn Susanna 8041 HA Rito Blackcap 9038  
 16228630 HD Dunn Susanna 6140 OCC Legend 616L  
 #HD Dunn Susanna 2390

SIRE	EPD
CED	+1
BEPD	+4.2
WEPD	+62
YEPD	+110
MILK	+28
DAM	EPD
CED	+8
BEPD	+1.3
WEPD	+56
YEPD	+89
MILK	+26

CED	BEPD	WEPD	YEPD	MILK	Actual BW	205 Ratio	365 Ratio	PAP SCORE	Actual Scrotal
+4	+3.0	+61	+98	+27	90	112	101	45	35
MARB	RE	\$EN	\$W	\$F	\$G	\$B	Dam Production		
+4.7	+4.3	-12.01	+39.62	+39.83	+28.39	+82.62	4-107		

# 120 HD DUNN EFFICIENT 3282

Birth Date: 4-26-2013 Bull 17715218 Tattoo: 3282

#CAR Efficient 534 KCF Bennett Efficient  
 HD Dunn Efficient 1218 #CAR Miss Susie 308  
 17094599 #HD Dunn Kate 3493 #+OCC Great Plains 943G  
 HD Dunn Kate 0618

HD Dunn Rainmaker 9302 Sitz Rainmaker 8276  
 HD Dunn Primrose 1381 HD Dunn Blackbird 2206  
 17092368 HD Dunn Primrose 1556 Sitz Ext 7277  
 TJH Primrose 4400

SIRE	EPD
CED	+8
BEPD	+1
WEPD	+52
YEPD	+87
MILK	+26
DAM	EPD
CED	-4
BEPD	+4.9
WEPD	+38
YEPD	+62
MILK	+25

CED	BEPD	WEPD	YEPD	MILK	Actual BW	205 Ratio	365 Ratio	PAP SCORE	Actual Scrotal
+6	+9	+49	+74	+25	68	112	96	49	37
MARB	RE	\$EN	\$W	\$F	\$G	\$B	Dam Production		
+4.7	+1.5	-2.10	+38.73	+15.44	+27.66	+60.38	1-112		

# 123 HD DUNN GAME DAY 3373

Birth Date: 5-16-2013 Bull 17672389 Tattoo: 3373

#+GDAR Game Day 449 (RF) #+Boyd New Day 8005  
 179 Game Day RBA 551 #GDAR Miss Wix 474  
 16859820 576 Miss Alliance RBA 179 #KMK Alliance 6595 187  
 #224 Miss New Level Rba 576

Sinclair Mountain Pass 4P138 #N Bar Prime Time D806  
 HD Dunn Merle 0260 N Bar Kinochtry Beauty V1490  
 16794790 HD Dunn Merle 3040 #Bon View New Design 878  
 +HD Dunn Merle 1160

SIRE	EPD
CED	+6
BEPD	+9
WEPD	+51
YEPD	+88
MILK	+24
DAM	EPD
CED	+2
BEPD	+1.1
WEPD	+42
YEPD	+74
MILK	+24

CED	BEPD	WEPD	YEPD	MILK	Actual BW	205 Ratio	365 Ratio	PAP SCORE	Actual Scrotal
+4	+7	+48	+79	+24	80	105	97	37	36
MARB	RE	\$EN	\$W	\$F	\$G	\$B	Dam Production		
+4.5	+2.4	-2.90	+35.52	+22.00	+21.79	+58.38	2-101		

# 121 HD DUNN IN FOCUS 3259

Birth Date: 4-25-2013 Bull 17638236 Tattoo: 3259

#SAF Focus of ER #SAF Fame  
 Mytty In Focus (RF) GDAR Forever Lady 246  
 #13880818 Mytty Countess 906 #Sitz Alliance 6595  
 Baldrige Countess 357

CAR 461 Tracker 6106 CAR Tracker 461  
 HD Dunn Lass 0587 Car Miss Roberta 068  
 16794860 HD Dunn Lass 7252 #BCC Bushwacker 41-93  
 +HD Dunn Lass 2097

SIRE	EPD
CED	+12
BEPD	-1.2
WEPD	+54
YEPD	+95
MILK	+25
DAM	EPD
CED	+2
BEPD	+10.1
WEPD	+53
YEPD	+80
MILK	+28

CED	BEPD	WEPD	YEPD	MILK	Actual BW	205 Ratio	365 Ratio	PAP SCORE	Actual Scrotal
+14	+1	+54	+86	+26	53	104	99	37	39
MARB	RE	\$EN	\$W	\$F	\$G	\$B	Dam Production		
+4.5	-0.1	-6.45	+42.13	+27.84	+26.15	+59.09	2-93		



HD Dunn in Focus 3259 - Lot 121

### 124 HD DUNN GAME DAY 3337

Birth Date: 5-10-2013 Bull 17672391 Tatoo: 3337

#+GDAR Game Day 449 <sup>REF</sup>

179 Game Day RBA 551

16859820 576 Miss Alliance RBA 179

#OCC Magnitude 805M

HD Dunn Blackcap Effie 0117

16794746 HD Dunn Blackcap Effie 8007

#+Boyd New Day 8005

#GDAR Miss Wix 474

#KMK Alliance 6595 187

#224 Miss New Level Rba 576

#+OCC Emblazon 854E

OCC Pollyanna 878G

#OCC Missing Link 830M

HD Dunn Blackcap Effie 6115

#### SIRE EPD

CED	+6
BEPD	+9
WEPD	+51
YEPD	+88
MILK	+24

#### DAM EPD

CED	-6
BEPD	+4.7
WEPD	+48
YEPD	+76
MILK	+16

CED	BEPD	WEPD	YEPD	MILK	Actual BW	205 Ratio	365 Ratio	PAP SCORE	Actual Scrotal
+1	+2.5	+49	+83	+20	80	99	100	40	35.5
MARB	RE	\$EN	\$W	\$F	\$G	\$B	Dam Production		
+.27	+.71	+.46	+29.71	+26.50	+23.15	+58.61	2-99		

### 125 HD DUNN GAME DAY 3274

Birth Date: 4-26-2013 Bull 17638637 Tatoo: 3274

#+Boyd New Day 8005

GDAR Game Day 449 <sup>REF</sup>

#+14691231 #GDAR Miss Wix 474

N Bar Explosion V1495

HD Dunn Lass 1548

13925580 HD Dunn Lass 8085

#AAR New Trend

SVF Forever Lady 57D

#Tehama Band 207

GDAR Miss Wix 749

#N Bar Explosion

#N Bar Kinochtry Beauty 4317

#Sitz Traveler 8180

HD Dunn Lass 6248

#### SIRE EPD

CED	+9
BEPD	-3
WEPD	+51
YEPD	+95
MILK	+26

#### DAM EPD

CED	+0
BEPD	+1.8
WEPD	+32
YEPD	+49
MILK	+18

CED	BEPD	WEPD	YEPD	MILK	Actual BW	205 Ratio	365 Ratio	PAP SCORE	Actual Scrotal
+6	+3	+43	+72	+22	81	100	97	38	37.5
MARB	RE	\$EN	\$W	\$F	\$G	\$B	Dam Production		
+.32	+.49	+.577	+36.21	+15.83	+24.17	+39.18	11-98		

### 126 HD DUNN GAME DAY 3024

Birth Date: 3-5-2013 Bull 17638216 Tatoo: 3024

#+Boyd New Day 8005

GDAR Game Day 449 <sup>REF</sup>

#+14691231 #GDAR Miss Wix 474

HD Dunn Rainmaker 9302

HD Dunn Georgina 1372

17092363 HD Dunn Georgina 3172

#AAR New Trend

SVF Forever Lady 57D

#Tehama Band 207

GDAR Miss Wix 749

Sitz Rainmaker 8276

HD Dunn Blackbird 2206

Rito 8K4 of 5028 Rito 3X25

Shoshone Georgina 131

#### SIRE EPD

CED	+9
BEPD	-3
WEPD	+51
YEPD	+95
MILK	+26

#### DAM EPD

CED	-11
BEPD	+6.4
WEPD	+48
YEPD	+77
MILK	+20

CED	BEPD	WEPD	YEPD	MILK	Actual BW	205 Ratio	365 Ratio	PAP SCORE	Actual Scrotal
-1	+2.7	+49	+84	+23	75	98	98	40	34
MARB	RE	\$EN	\$W	\$F	\$G	\$B	Dam Production		
+.34	+.63	-3.73	+29.93	+27.76	+27.43	+51.99	1-98		

### 127 HD DUNN GAME DAY 3182

Birth Date: 4-21-2013 Bull 17638230 Tatoo: 3182

#+Boyd New Day 8005

GDAR Game Day 449 <sup>REF</sup>

#+14691231 #GDAR Miss Wix 474

Sitz Rainmaker 8276

HD Dunn Blackbird 0291

16794801 HD Dunn Blackbird 6209

#AAR New Trend

SVF Forever Lady 57D

#Tehama Band 207

GDAR Miss Wix 749

#Sitz Rainmaker 6169

#Sitz Erica Everelda 3172

GDAR Traveler 584 LT

#CH Blackbird C4352

#### SIRE EPD

CED	+9
BEPD	-3
WEPD	+51
YEPD	+95
MILK	+26

#### DAM EPD

CED	+7
BEPD	+1.2
WEPD	+39
YEPD	+74
MILK	+22

CED	BEPD	WEPD	YEPD	MILK	Actual BW	205 Ratio	365 Ratio	PAP SCORE	Actual Scrotal
+12	-1.6	+43	+78	+24	65	98	91	42	38.5
MARB	RE	\$EN	\$W	\$F	\$G	\$B	Dam Production		
+.42	+.44	+.77	+36.66	+23.16	+27.44	+48.90	2-105		

### 128 HD DUNN GAME DAY 3293

Birth Date: 4-28-2013 Bull 17638624 Tatoo: 3293

#+Boyd New Day 8005

GDAR Game Day 449 <sup>REF</sup>

#+14691231 #GDAR Miss Wix 474

#AAR New Trend

SVF Forever Lady 57D

#Tehama Band 207

GDAR Miss Wix 749

#N Bar Emulation EXT

HD Dunn Frances 4326

14851069 HD Dunn Frances 9622

#Emulation N Bar 5522

N Bar Primrose 2424

Shoshone Link 2323

Shoshone Frances 6306

#### SIRE EPD

CED	+9
BEPD	-3
WEPD	+51
YEPD	+95
MILK	+26

#### DAM EPD

CED	-11
BEPD	+6.3
WEPD	+45
YEPD	+68
MILK	+18

CED	BEPD	WEPD	YEPD	MILK	Actual BW	205 Ratio	365 Ratio	PAP SCORE	Actual Scrotal
+1	+2.9	+45	+80	+22	88	97	100	43	35
MARB	RE	\$EN	\$W	\$F	\$G	\$B	Dam Production		
+.36	+.46	+2.01	+29.36	+24.69	+24.32	+47.27	6-105		

### 129 HD DUNN GAME DAY 3213

Birth Date: 4-22-2013 Bull 17638599 Tatoo: 3213

#+Boyd New Day 8005

GDAR Game Day 449 <sup>REF</sup>

#+14691231 #GDAR Miss Wix 474

#AAR New Trend

SVF Forever Lady 57D

#Tehama Band 207

GDAR Miss Wix 749

Sitz Rainmaker 8276

HD Dunn Lass 0187

16794768 #HD Dunn Lass 6180

#Sitz Rainmaker 6169

#Sitz Erica Everelda 3172

#+Boyd New Day 8005

HD Dunn Lass 3439

#### SIRE EPD

CED	+9
BEPD	-3
WEPD	+51
YEPD	+95
MILK	+26

#### DAM EPD

CED	+3
BEPD	+3.6
WEPD	+47
YEPD	+94
MILK	+19

CED	BEPD	WEPD	YEPD	MILK	Actual BW	205 Ratio	365 Ratio	PAP SCORE	Actual Scrotal
+5	+2.2	+46	+89	+23	81	95	94	40	35.5
MARB	RE	\$EN	\$W	\$F	\$G	\$B	Dam Production		
+.36	+.65	-2.24	+29.65	+35.66	+26.91	+56.42	2-96		

### 130 HD DUNN MOUNTAIN PASS 3089

Birth Date: 3-29-2013 Bull 17715206 Tatoo: 3089

Sinclair Mountain Pass 4P138

HD Dunn Mountain Pass 1087

17092386 HD Dunn Dixie Erica 4123

#N Bar Prime Time D806

N Bar Kinochtry Beauty V1490

#Hyline Right Time 338

HD Dunn Dixie Erica 0367

#CRA Bextor 872 5205 608

HD Dunn Blackcap Effie 1101

17092813 #HD Dunn Blackcap Effie 4162

#BAR Ext Traveler 205

Cra Lady Jaye 608 498 S Easy

#SAF Focus of ER

HD Dunn Blackcap Effie 1027

#### SIRE EPD

CED	+4
BEPD	+9
WEPD	+44
YEPD	+81
MILK	+24

#### DAM EPD

CED	+4
BEPD	+2.1
WEPD	+51
YEPD	+84
MILK	+28

CED	BEPD	WEPD	YEPD	MILK	Actual BW	205 Ratio	365 Ratio	PAP SCORE	Actual Scrotal
+4	+1.0	+49	+83	+26	73	107	102	36	35.5
MARB	RE	\$EN	\$W	\$F	\$G	\$B	Dam Production		
+.57	+.52	-7.16	+35.15	+26.50	+34.79	+72.82	1-107		



# Registered Angus Bred Heifers



## 135 HD DUNN MERLE 3179

Birth Date: 4-21-2013 Cow 17638651 Tattoo: 3179

#Connealy Onward  
**Sitz Upward 307R**  
 #14963730 Sitz Henrietta Pride 81M

#Connealy Lead On  
 Altune of Conanga 6104  
 #Sitz Value 7097  
 Sitz Henrietta Pride 1370

Sitz Rainmaker 8276  
**HD Dunn Merle 9243**  
 16492793 HD Dunn Merle 1605

#Sitz Rainmaker 6169  
 #Sitz Erica Everelda 3172  
 Rito 912 of 6Y17 Rito 616  
 +HD Dunn Merle 9166

\$EN
-20.74
\$W
+37.37
\$F
+55.46
\$G
+20.12
\$B
+88.61

CED	BEPD	WEPD	YEPD	MILK	MARB	RE	Dam Production
+7	+1.3	+57	+108	+31	l+.34	l+.40	3-99

Pasture bred to Lots 4, 50 and 54. Heifer calf due 3/26/15.

## 138 HD DUNN MERLE 3183

Birth Date: 4-21-2013 Cow 17638501 Tattoo: 3183

#DHD Traveler 6807  
**Rito 616 of 4B20 6807**  
 #12530601 +Rita 4B20 of 0FB1 Bando

#QAS Traveler 23-4  
 #Bemindful Maid DHD 0807  
 #Tehama Bando 155  
 +Rita 0FB1 of 5H11 Fullback

HD Dunn Bushwaker 7353  
**HD Dunn Merle 9459**  
 16492862 #HD Dunn Merle 6174

#BCC Bushwacker 41-93  
 +HD Dunn Dixie Erica 2291  
 #+Boyd New Day 8005  
 HD Dunn Merle 2588

\$EN
+1.65
\$W
+31.84
\$F
+28.74
\$G
+27.85
\$B
+68.58

CED	BEPD	WEPD	YEPD	MILK	MARB	RE	Dam Production
+6	+1.2	+47	+84	+20	l+.31	l+.45	3-101

Pasture bred to Lots 4, 50 and 54. Heifer calf due 3/22/15.

## 136 HD DUNN ERICA LASSIE 3363

Birth Date: 5-15-2013 Cow 17715670 Tattoo: 3363

#Sitz Upward 307R  
**HD Dunn Upward 1194**  
 17094748 HD Dunn Dixie Erica 4556

#Connealy Onward  
 Sitz Henrietta Pride 81M  
 #+OCC Great Plains 943G  
 +HD Dunn Dixie Erica 0059

Sitz Rainmaker 8276  
**HD Dunn Erica Lassie 9355**  
 16492819 HD Dunn Erica Lassie 5360

#Sitz Rainmaker 6169  
 #Sitz Erica Everelda 3172  
 +HD Dunn Explosion 1230  
 #HD Dunn Erica Lassie 8161

\$EN
-3.99
\$W
+35.78
\$F
+40.98
\$G
+25.03
\$B
+73.21

CED	BEPD	WEPD	YEPD	MILK	MARB	RE	Dam Production
+6	+1.8	+51	+95	+24	l+.47	l+.24	3-98

Pasture bred to Lots 7, 32, and 117. Heifer calf due 3/26/15.

## 139 HD DUNN GEORGINA 3082

Birth Date: 3-26-2013 Cow 17715651 Tattoo: 3082

#CRA Bextor 872 5205 608  
**HD Dunn Bextor 1266**  
 17092794 #HD Dunn Lass 6180

#BAR Ext Traveler 205  
 Cra Lady Jaye 608 498 S Easy  
 #+Boyd New Day 8005  
 HD Dunn Lass 3439

#+OCC Great Plains 943G  
**HD Dunn Georgina 1166**  
 17092326 HD Dunn Georgina 7395

#N Bar Emulation EXT  
 Dixie Erica of CH 1019  
 #+TC Grid Topper 355  
 Shoshone Georgina A436

\$EN
-4.19
\$W
+29.57
\$F
+35.74
\$G
N/A
\$B
N/A

CED	BEPD	WEPD	YEPD	MILK	MARB	RE	Dam Production
+1	+2.2	+51	+91	+21	N/A	N/A	1-95

Pasture bred to Lots 7, 32, and 117. Bull calf due 3/26/15.

## 137 HD DUNN MERLE 3056

Birth Date: 3-18-2013 Cow 17715525 Tattoo: 3056

#CAR Efficient 534  
**HD Dunn Efficient 1218**  
 17094599 #HD Dunn Kate 3493

KCF Bennett Efficient  
 #CAR Miss Susie 308  
 #+OCC Great Plains 943G  
 HD Dunn Kate 0618

Hyline Rito 18  
**HD Dunn Merle 1394**  
 17324790 HD Dunn Merle 6368

Hyline Rito 478  
 Hyline Diamond Lil 303  
 +Riverbend Direction 4333  
 HD Dunn Merle 0352

\$EN
-2.04
\$W
+23.88
\$F
+27.97
\$G
N/A
\$B
N/A

CED	BEPD	WEPD	YEPD	MILK	MARB	RE	Dam Production
-2	+3.8	+46	+83	+22	N/A	N/A	1-96

Pasture bred to Lots 4, 50 and 54. Heifer calf due 3/28/15.

## 140 HD DUNN BLACKBIRD 3120

Birth Date: 4-14-2013 Cow 17715663 Tattoo: 3120

#CRA Bextor 872 5205 608  
**HD Dunn Bextor 1266**  
 17092794 #HD Dunn Lass 6180

#BAR Ext Traveler 205  
 Cra Lady Jaye 608 498 S Easy  
 #+Boyd New Day 8005  
 HD Dunn Lass 3439

#+GDAR Game Day 449 <sup>MSF</sup>  
**HD Dunn Blackbird 1231**  
 17324787 HD Dunn Blackbird 8133

#+Boyd New Day 8005  
 #GDAR Miss Wix 474  
 #BC Marathon 7022  
 HD Dunn Blackbird 9275

\$EN
-10.59
\$W
+33.39
\$F
+44.55
\$G
N/A
\$B
N/A

CED	BEPD	WEPD	YEPD	MILK	MARB	RE	Dam Production
+4	+1.9	+57	+100	+23	N/A	N/A	1-112

Pasture bred to Lots 7, 32, and 117. Heifer calf due 3/26/15.

# 141 HD DUNN DIXIE ERICA 3157

Birth Date: 4-18-2013 Cow 17641876 Tattoo: 3157

#CH Quantum 6247 #CH Quantum 3330  
 Cole Creek Black Cedar 46P CH Blackbird 0136  
 14496765 Cole Creek Clova Juanada 67 #AAR Windy Ridge 523  
 Cole Creek Clova Juanada 811

#OCC Magnitude 805M #+OCC Emblazon 854E  
 HD Dunn Dixie Erica 9074 OCC Pollyanna 878G  
 16492753 #HD Dunn Dixie Erica 4142 #Hyline Right Time 338  
 +HD Dunn Dixie Erica 1534

\$EN
+10.19
\$W
+29.73
\$F
+27.76
\$G
N/A
\$B
N/A

CED	BEPD	WEPD	YEPD	MILK	MARB	RE	Dam Production
+3	+3.0	+49	+84	+15	N/A	N/A	3-84

Bred to SINCLAIR MOUNTAIN PASS 4P138. Calf due 3/6/15.

# 145 HD DUNN MERLE 3043

Birth Date: 3-11-2013 Cow 17905763 Tattoo: 3043

#+Boyd New Day 8005 #AAR New Trend  
 GDAR Game Day 449 SVF Forever Lady 57D  
 #+14691231 #GDAR Miss Wix 474 #Tehama Band 207  
 GDAR Miss Wix 749

Hyline Rito 18 Hyline Rito 478  
 HD Dunn Merle 1336 Hyline Diamond Lil 303  
 17092351 HD Dunn Merle 5344 +Rito 3X39 of 2536 EXP  
 HD Dunn Merle 1449

\$EN
+2.24
\$W
+32.05
\$F
+31.29
\$G
N/A
\$B
N/A

CED	BEPD	WEPD	YEPD	MILK	MARB	RE	Dam Production
+4	+2.0	+47	+86	+22	N/A	N/A	1-90

Bred to SITZ FINAL STATEMENT 10912. Heifer calf due 3/6/15.

# 142 HD DUNN BLACKBIRD 3141

Birth Date: 4-17-2013 Cow 17650745 Tattoo: 3141

#N Bar Prime Time D806 #Gardens Prime Time  
 Sinclair Mountain Pass 4P138 N Bar Miss Emulous A404  
 15081884 N Bar Kinochtry Beauty V1490 +OCC Exodus 712E  
 #N Bar Kinochtry Beauty 4317

+OCC Rising Sun 739R OCC Jet Stream 825J  
 HD Dunn Blackbird 0476 +OCC Dixie Erica 805G  
 17035462 #HD Dunn Blackbird 5130 #Hyline Right Time 338  
 HD Dunn Blackbird 2126

\$EN
-1.56
\$W
+32.35
\$F
+31.50
\$G
N/A
\$B
N/A

CED	BEPD	WEPD	YEPD	MILK	MARB	RE	Dam Production
+4	+1.0	+44	+85	+24	N/A	N/A	2-100

Pasture bred to Lots 4, 50 and 54. Heifer calf due 3/22/15.

# 146 HD DUNN LUCY 3068

Birth Date: 3-23-2013 Cow 17715637 Tattoo: 3068

#+GDAR Game Day 449 #+Boyd New Day 8005  
 HD Dunn Game Day 1171 #GDAR Miss Wix 474  
 17094705 HD Dunn Rev Rose 2247 HD Dunn Cornerstone 9499  
 HD Dunn Rev Rose 7299

Sitz Dash 10277 #Sitz Upward 307R  
 HD Dunn Lucy 1309 +Sitz Everelda Entense 2665  
 17101643 HD Dunn Lucy 5320 +HD Dunn Explosion 1230  
 Shoshone Lucy 866

\$EN
+2.98
\$W
+33.75
\$F
+14.63
\$G
N/A
\$B
N/A

CED	BEPD	WEPD	YEPD	MILK	MARB	RE	Dam Production
+8	+0	+43	+71	+22	N/A	N/A	1-98

Pasture bred to Lots 7, 32, and 117. Bull calf due 3/26/15.

# 143 SBA BLACKBIRD 309

Birth Date: 4-16-2013 Cow 17719706 Tattoo: 309

#+GDAR Game Day 449 #+Boyd New Day 8005  
 179 Game Day RBA 551 #GDAR Miss Wix 474  
 16859820 576 Miss Alliance RBA 179 #KMK Alliance 6595 187  
 #224 Miss New Level Rba 576

#OCC Magnitude 805M #+OCC Emblazon 854E  
 HD Dunn Blackbird 0277 OCC Pollyanna 878G  
 16851977 HD Dunn Blackbird 5337 HD Dunn Cornerstone 9499  
 CH Blackbird C4530

\$EN
+5.45
\$W
+20.38
\$F
+21.45
\$G
N/A
\$B
N/A

CED	BEPD	WEPD	YEPD	MILK	MARB	RE	Dam Production
-3	+4.6	+44	+77	+18	N/A	N/A	2-94

AI Bred to SAV FINAL ANSWER 0035. Heifer calf due 3/6/15.

# 147 HD DUNN BLACKBIRD 3069

Birth Date: 3-24-2013 Cow 17715638 Tattoo: 3069

#+GDAR Game Day 449 #+Boyd New Day 8005  
 HD Dunn Game Day 1171 #GDAR Miss Wix 474  
 17094705 HD Dunn Rev Rose 2247 HD Dunn Cornerstone 9499  
 HD Dunn Rev Rose 7299

#CRA Bextor 872 5205 608 #BAR Ext Traveler 205  
 HD Dunn Blackbird 1097 Cra Lady Jaye 608 498 S Easy  
 17092823 HD Dunn Blackbird 2121 #Bon View New Design 878  
 #CH Blackbird C4352

\$EN
-2.90
\$W
+34.28
\$F
+22.96
\$G
N/A
\$B
N/A

CED	BEPD	WEPD	YEPD	MILK	MARB	RE	Dam Production
+9	+0	+46	+79	+24	N/A	N/A	1-101

Pasture bred to Lots 7, 32, and 117. Bull calf due 3/26/15.

# 144 HD DUNN MERLE 3296

Birth Date: 4-28-2013 Cow 17638585 Tattoo: 3296

#+Boyd New Day 8005 #AAR New Trend  
 GDAR Game Day 449 SVF Forever Lady 57D  
 #+14691231 #GDAR Miss Wix 474 #Tehama Band 207  
 GDAR Miss Wix 749

Hyline Ambush 145 +Hyline Ambush 6700  
 HD Dunn Merle 0306 Hyline Blackcap 219  
 17039241 +HD Dunn Merle 9166 #GDAR Royce 5140  
 #Merle of CH 6131

\$EN
+1.32
\$W
+30.78
\$F
+28.46
\$G
N/A
\$B
N/A

CED	BEPD	WEPD	YEPD	MILK	MARB	RE	Dam Production
+4	+2.1	+45	+83	+22	N/A	N/A	2-92

Pasture bred to Lots 7, 32, and 117. Bull calf due 3/28/15.

# 148 HD DUNN DIXIE ERICA 3112

Birth Date: 4-11-2013 Cow 17715662 Tattoo: 3112

#+GDAR Game Day 449 #+Boyd New Day 8005  
 HD Dunn Game Day 1171 #GDAR Miss Wix 474  
 17094705 HD Dunn Rev Rose 2247 HD Dunn Cornerstone 9499  
 HD Dunn Rev Rose 7299

#CRA Bextor 872 5205 608 #BAR Ext Traveler 205  
 HD Dunn Dixie Erica 1116 Cra Lady Jaye 608 498 S Easy  
 17092811 HD Dunn Dixie Erica 4168 #+OCC Great Plains 943G  
 +HD Dunn Dixie Erica 1078

\$EN
-5.87
\$W
+38.70
\$F
+25.53
\$G
N/A
\$B
N/A

CED	BEPD	WEPD	YEPD	MILK	MARB	RE	Dam Production
+9	-.5	+51	+83	+25	N/A	N/A	1-110

Pasture bred to Lots 7, 32, and 117. Bull calf due 3/26/15.

# 149 HD Dunn Merle 3132

Birth Date: 4-16-2013 Cow 17715664 Tattoo: 3132

#+GDAR Game Day 449 (RF) #+Boyd New Day 8005  
 #GDAR Miss Wix 474  
**HD Dunn Game Day 1171**  
**17094705** HD Dunn Rev Rose 2247 HD Dunn Cornerstone 9499  
 HD Dunn Rev Rose 7299  
  
 #CRA Bextor 872 5205 608 #BAR Ext Traveler 205  
**HD Dunn Merle 1260** Cra Lady Jaye 608 498 S Easy  
**17324788** HD Dunn Merle 8172 #BC Marathon 7022  
 #HD Dunn Merle 3531

\$EN
-3.30
\$W
+34.52
\$F
+26.50
\$G
N/A
\$B
N/A

CED	BEPD	WEPD	YEPD	MILK	MARB	RE	Dam Production
+6	+7	+49	+83	+23	N/A	N/A	1-110

## Commercial Bred Heifers

**Lot 150 - Pink Tag Heifers - 21 each**  
 Commercial Angus Bred Heifers, pasture bred to calve April 15-30, 2015 to Lots 4, 7, 32, 50, 54, and 117.

**Lot 151 - Green Tag Heifers - 10 each**  
 Commercial Angus Bred Heifers, pasture bred to calve May 5-20, 2015 to Lots 4, 7, 32, 50, 54, and 117.

Pasture bred to Lots 7, 32, and 117. Bull calf due 3/26/15.

## HD ANGUS BULLS

Lot	Tattoo	Birth Date	Sire	205 BW	365 Ratio	605 Ratio	PAP	ACT SC	CED EPD	BW EPD	WW EPD	YW EPD	MILK EPD	MARB EPD	RE EPD	\$EN	\$W	\$F	\$G	\$B
1	3260	4-25-13	Sinclair Mountain Pass 4P138	84	100	99	41	37.0	2	1.7	45	80	25	0.37	0.49	-0.59	34.80	24.69	20.38	65.51
2	3003	2-28-13	Sinclair Mountain Pass 4P138	78	101	97	40	37.0	2	1.4	44	76	23	0.47	0.19	3.70	35.48	20.22	21.41	54.07
3	3207	4-22-13	#+GDAR Game Day 449 (MF-CF-VF)	84	105	103	41	38.5	5	1.7	51	92	25	0.55	0.59	-5.28	36.35	37.04	30.41	69.16
4	3067	3-23-13	HD Dunn Bextor 1266	71	101	105	42	35.0	9	-0.1	54	96	23	0.52	0.49	-8.86	35.09	40.77	33.77	65.15
5	22	4-18-13	#Sitz Upward 307R (MF-CF-VF)	82	102	107	45	38.0	5	2.6	60	110	30	0.45	0.65	-20.17	36.28	56.62	27.59	100.70
6	3295	4-28-13	#+GDAR Game Day 449 (MF-CF-VF)	97	108	105	42	42.0	-11	3.8	42	76	20	0.17	0.45	15.34	33.83	21.17	17.40	47.39
7	3131	4-16-13	HD Dunn Bextor 1266	64	115	115	36	35.0	10	-1.2	63	108	26	0.35	0.81	-17.95	41.27	52.25	28.97	72.94
8	3306	4-29-13	#Mytty In Focus (MF-CF-VF)	81	110	107	56	40.0	5	1.5	55	94	25	0.50	0.09	-4.21	42.00	37.63	26.48	66.34
9	3052	3-17-13	HD Dunn in Focus 1119	83	100	100	42	39.5	1+5	1+1.6	1+47	1+82	1+25	1+4.8	1+2.2	-5.44	32.24	26.22	26.93	74.45
10	20	3-13-13	SAV Pioneer 7301 (MF-CF-VF)	84	110	112	34	36.5	2	2.8	56	102	28	0.38	0.76	-14.44	34.25	47.76	26.83	82.85
11	3310	4-30-13	#Rito 616 of 4B20 6807 (MF-CF-VF)	97	106	112	51	39.5	1	3.1	42	84	23	0.50	0.03	-3.04	22.24	31.21	28.33	78.00
12	3366	5-15-13	Hylines Rito 18 (MF-MF-AMF)	97	110	110	42	40.0	-3	4.4	50	94	20	0.25	0.09	-1.83	23.26	40.18	18.12	53.24
13	3387	5-17-13	Hylines Rito 18 (MF-MF-AMF)	88	114	109	45	36.5	2	3.2	54	96	17	0.16	0.10	1.24	28.76	40.77	12.68	58.60
14	3144	4-17-13	Cole Creek Black Cedar 46P	92	108	107	44	39.0	2	4.4	48	81	22	0.33	0.59	2.81	29.16	24.48	27.67	66.98
15	3234	4-23-13	Cole Creek Black Cedar 46P	100	108	105	61	36.0	-1	4.7	48	85	26	0.58	0.30	-3.80	28.20	29.52	29.90	71.71
16	3264	4-25-13	Cole Creek Black Cedar 46P	94	104	102	48	40.0	4	3.4	46	79	24	0.42	0.64	0.38	30.69	22.96	30.25	70.90
17	3314	4-30-13	#Mytty In Focus (MF-CF-VF)	87	109	107	39	40.0	3	2.2	49	84	23	0.46	0.26	9.28	44.32	27.76	26.69	69.74
18	3248	4-24-13	#Mytty In Focus (MF-CF-VF)	81	100	99	38	41.0	3	2.9	52	90	25	0.49	0.12	-6.77	32.72	33.94	28.63	71.88
19	3073	3-25-13	HD Dunn MYTTY in Focus 1030	78	107	106	38	38.5	7	1.4	49	88	22	0.41	0.31	-4.16	31.15	32.86	26.76	67.49
20	19	3-13-13	#+GDAR Game Day 449 (MF-CF-VF)	84	109	102	40	35.5	3	1.8	50	86	23	0.34	0.70	-0.94	36.13	29.81	25.77	56.18
21	3272	4-25-13	#+GDAR Game Day 449 (MF-CF-VF)	87	111	109	42	37.5	5	1.0	57	99	24	0.28	0.66	1.68	49.06	43.21	24.02	59.57
22	3236	4-23-13	#+GDAR Game Day 449 (MF-CF-VF)	78	110	112	47	36.0	6	0.6	59	103	28	0.20	0.86	-2.81	53.54	47.54	17.61	64.03
23	3319	5-1-13	#+GDAR Game Day 449 (MF-CF-VF)	100	106	106	41	38.0	-17	5.2	47	81	27	0.17	0.85	7.33	38.47	24.97	20.51	53.54
24	3297	4-28-13	#+GDAR Game Day 449 (MF-CF-VF)	81	104	105	42	40.0	7	-0.6	45	81	22	0.27	0.39	1.77	35.36	25.94	20.33	43.39
25	3347	5-12-13	HD Dunn Game Day 1195	82	101	100	36	35.5	4	2.5	39	73	23	0.19	0.60	0.88	24.60	18.92	21.82	46.20
26	3402	5-21-13	HD Dunn Game Day 1195	95	105	104	36	37.0	-1	4.4	43	72	23	0.25	0.48	1.30	24.03	15.83	23.99	46.59
27	3339	5-10-13	HD Dunn Game Day 1195	62	110	108	34	35.0	1+2	1+1.9	1+42	1+74	1+22	0.22	0.39	1.73	28.54	18.72	19.80	42.57
28	3307	4-29-13	Sinclair Mountain Pass 4P138	95	111	107	39	38.0	-12	5.0	53	87	23	0.46	0.14	8.26	39.74	29.60	17.12	57.93
29	3316	4-30-13	Sinclair Mountain Pass 4P138	90	109	113	38	40.5	-4	2.6	49	90	27	0.48	0.37	3.04	43.51	35.45	21.00	73.23
30	3275	4-26-13	Sinclair Mountain Pass 4P138	79	109	112	68	40.5	5	0.8	52	95	24	0.46	0.13	-6.22	36.24	40.47	18.82	68.27
31	3013	3-3-13	Sinclair Mountain Pass 4P138	81	102	103	43	35.0	0	1.8	45	90	24	0.55	0.28	-2.62	30.91	37.47	21.70	61.54
32	3006	3-1-13	Sinclair Mountain Pass 4P138	68	101	102	41	36.0	8	-0.1	44	82	23	0.39	0.40	8.40	42.03	27.68	23.67	66.71
33	3008	3-1-13	Sinclair Mountain Pass 4P138	72	109	108	52	40.0	2	0.9	52	95	26	0.50	0.42	-7.78	37.80	40.47	23.83	80.05
34	3242	4-24-13	Sinclair Mountain Pass 4P138	85	109	103	52	42.0	-4	2.5	52	87	24	0.70	0.31	4.16	43.13	30.09	31.82	78.33
35	3137	4-16-13	Sinclair Mountain Pass 4P138	81	102	105	39	42.0	2	1.9	48	91	22	0.60	0.22	-2.36	30.74	37.25	21.64	73.54
36	3007	3-1-13	Sinclair Mountain Pass 4P138	71	100	97	44	37.0	4	0.3	43	81	24	0.67	0.02	0.39	34.11	26.91	18.14	64.36
37	3017	3-3-13	Sinclair Mountain Pass 4P138	79	98	98	37	39.0	2	1.9	43	78	22	0.48	0.28	3.53	31.42	23.16	21.40	62.05
50	3078	3-26-13	HD Dunn Game Day 1171	71	109	102	39	37.5	10	-0.5	52	82	23	0.32	0.34	-2.88	39.47	23.80	23.44	50.80
51	3305	4-29-13	#+GDAR Game Day 449 (MF-CF-VF)	100	109	103	42	38.0	0	3.5	48	84	27	0.31	0.59	-6.21	30.73	28.25	25.83	53.30



Lot	Tattoo	Birth Date	Sire	BW	205 Ratio	365 Ratio	PAP	ACT SC	CED EPD	BW EPD	WW EPD	YW EPD	MILK EPD	MARB EPD	RE EPD	\$EN	\$W	\$F	\$G	\$B
52	3300	4-29-13	#+GDAR Game Day 449 <small>[MIF-CF-NF]</small>	92	105	102	49	39.0	1	2.7	49	91	25	0.46	0.67	-5.19	31.76	36.75	28.32	59.19
53	3014	3-3-13	#+GDAR Game Day 449 <small>[MIF-CF-NF]</small>	76	104	115	36	36.5	8	0.6	52	98	26	0.55	0.58	0.01	45.98	44.46	26.70	69.46
54	3280	4-26-13	#+GDAR Game Day 449 <small>[MIF-CF-NF]</small>	74	102	105	37	37.0	12	-0.9	45	85	26	0.45	0.55	1.93	42.37	31.00	25.88	53.62
55	3219	4-23-13	#+GDAR Game Day 449 <small>[MIF-CF-NF]</small>	94	101	100	37	35.0	2	2.9	52	92	22	0.37	0.64	-2.55	32.06	36.53	28.02	61.56
56	3046	3-12-13	#+GDAR Game Day 449 <small>[MIF-CF-NF]</small>	70	99	99	40	33.5	9	-0.4	41	78	24	0.40	0.72	0.86	33.30	24.13	28.52	57.18
57	3185	4-21-13	#+GDAR Game Day 449 <small>[MIF-CF-NF]</small>	83	98	100	37	37.5	5	1.3	40	75	21	0.31	0.71	5.41	29.81	20.89	27.24	47.13
58	3038	3-7-13	#+GDAR Game Day 449 <small>[MIF-CF-NF]</small>	79	97	104	42	37.0	4	2.3	45	88	24	0.37	0.67	-3.39	28.82	34.86	27.02	60.36
59	3095	3-31-13	HD Dunn Bextor 1266	79	122	120	37	37.0	5	1.5	63	109	28	0.33	0.64	-21.01	38.13	53.62	25.26	71.31
60	3101	4-3-13	HD Dunn Bextor 1266	87	119	118	38	40.0	2	2.2	59	104	26	0.53	0.23	-16.19	33.91	48.90	24.90	72.89
61	3269	4-25-13	#CRA Bextor 872 5205 608 <small>[MIF-CF-NF]</small>	85	109	103	54	36.0	4	2.3	54	82	26	0.47	0.44	-4.75	39.99	22.84	35.34	56.78
62	3162	4-19-13	#Sitz Upward 307R <small>[MIF-CF-NF]</small>	70	107	99	41	34.5	8	0.4	59	103	31	0.43	0.69	-18.34	42.93	47.54	28.79	95.48
63	3267	4-25-13	#Sitz Upward 307R <small>[MIF-CF-NF]</small>	95	105	116	39	38.5	2	2.8	58	113	33	0.26	0.30	-26.10	32.44	61.92	12.65	86.70
64	3192	4-22-13	#Sitz Upward 307R <small>[MIF-CF-NF]</small>	84	104	99	40	41.5	6	1.7	56	101	30	0.45	0.53	-17.19	37.51	46.41	24.16	93.24
65	3164	4-20-13	#Sitz Upward 307R <small>[MIF-CF-NF]</small>	86	100	97	36	39.5	2	3.1	56	102	31	0.50	0.36	-10.73	41.89	47.76	25.42	91.84
66	25	4-30-13	#Sitz Upward 307R <small>[MIF-CF-NF]</small>	83	102	95	35	35.0	4	2.7	57	100	32	0.51	0.41	-19.13	37.11	44.55	26.64	94.20
67	3322	5-3-13	HD Dunn Upward 1194	88	99	99	42	39.0	0	3.8	47	86	24	0.44	0.25	-2.42	27.82	31.29	26.50	73.15
68	3105	4-4-13	HD Dunn in Focus 1119	85	98	98	46	36.5	4	2.5	40	71	26	0.48	0.24	-2.15	27.49	16.03	29.69	62.44
69	3094	3-31-13	HD Dunn MYTTY in Focus 1030	78	107	111	44	39.0	4	2.8	51	96	26	0.54	0.09	-12.71	27.61	42.31	24.98	74.15
70	3175	4-21-13	#Rito 616 of 4B20 6807 <small>[MIF-CF-NF]</small>	88	99	95	40	35.0	3	2.6	43	78	21	0.42	0.37	1.72	26.10	23.16	30.41	77.69
71	3216	4-22-13	#Rito 616 of 4B20 6807 <small>[MIF-CF-NF]</small>	77	100	98	46	36.5	8	0.5	42	75	19	0.40	0.15	5.89	30.05	19.94	29.40	62.05
72	3169	4-20-13	#CRA Bextor 872 5205 608 <small>[MIF-CF-NF]</small>	85	104	102	50	37.5	6	1.4	47	83	25	0.39	0.59	-3.92	34.21	27.48	32.93	54.75
73	3084	3-27-13	HD Dunn Bextor 1266	81	106	101	37	33.0	1	3.1	56	91	25	0.44	0.48	-9.27	33.78	33.23	31.27	69.58
74	3074	3-25-13	HD Dunn Bextor 1266	87	97	98	37	35.5	1	2.9	48	83	23	0.35	0.64	-3.30	28.78	26.99	30.44	62.12
75	3214	4-22-13	Cole Creek Black Cedar 46P	96	106	103	47	34.5	1	4.7	48	87	22	0.43	0.51	-0.12	25.37	32.07	28.79	68.42
76	3215	4-22-13	Cole Creek Black Cedar 46P	96	102	101	40	39.5	2	3.9	43	75	23	0.44	0.44	3.14	27.31	19.47	28.36	66.24
77	3227	4-23-13	Cole Creek Black Cedar 46P	75	96	95	39	36.0	9	1.0	43	76	25	0.49	0.35	0.91	35.38	20.69	28.22	69.71
78	3165	4-20-13	HD Dunn Legend 7009 <small>[DOF]</small>	86	111	103	53	38.0	3	2.4	40	65	20	0.30	0.29	9.79	29.90	8.90	25.13	59.14
79	3349	5-13-13	Hyline Rito 18 <small>[MIF-MIF-NF]</small>	89	106	100	42	36.5	2	3.4	55	95	20	0.07	0.27	-2.12	30.91	38.94	10.99	58.04
80	3403	5-21-13	Hyline Rito 18 <small>[MIF-MIF-NF]</small>	86	104	99	42	38.5	1	3.5	52	93	18	0.23	0.20	1.70	28.04	37.84	19.27	58.12
81	3336	5-10-13	HD Dunn Rainmaker 1250	84	103	102	42	39.0	5	1.8	52	91	27	0.38	0.03	-11.87	33.70	35.23	20.75	68.70
82	3343	5-11-13	HD Dunn Rainmaker 1250	84	97	104	35	33.0	5	2.0	43	87	25	0.32	0.19	-7.56	24.92	34.57	19.81	64.52
83	3393	5-18-13	HD Dunn Great Plains 1293	69	101	97	46	38.0	8	0.9	52	88	21	0.29	0.50	-2.90	34.49	31.37	23.85	65.84
84	3356	5-14-13	179 Game Day RBA 551	69	109	112	40	35.0	8	0.1	53	95	24	0.28	0.33	-9.70	34.61	39.96	18.16	61.69
85	3064	3-22-13	HD Dunn Game Day 1171	72	97	91	39	36.0	10	-1.0	47	74	22	0.42	0.36	1.73	37.84	16.37	30.33	43.84
86	21	4-17-13	#+GDAR Game Day 449 <small>[MIF-CF-NF]</small>	62	104	102	35	36.0	11	-0.5	52	92	25	0.52	0.71	-7.23	38.38	36.53	32.55	72.28
87	3253	4-25-13	#+GDAR Game Day 449 <small>[MIF-CF-NF]</small>	89	106	110	37	34.5	2	2.0	48	92	25	0.46	0.54	-5.08	32.67	38.56	23.34	60.84
88	3114	4-13-13	#+GDAR Game Day 449 <small>[MIF-CF-NF]</small>	75	103	100	42	37.5	9	-0.6	53	87	21	0.25	0.85	0.46	40.70	29.60	25.19	52.79
89	3187	4-22-13	#+GDAR Game Day 449 <small>[MIF-CF-NF]</small>	80	103	112	40	37.5	5	1.8	48	95	25	0.45	0.34	-7.10	31.15	42.53	24.89	62.91
90	3279	4-26-13	#+GDAR Game Day 449 <small>[MIF-CF-NF]</small>	92	103	103	41	37.0	1	2.1	42	75	25	0.35	0.41	-0.74	30.45	19.94	23.72	46.56
91	3020	3-4-13	#+GDAR Game Day 449 <small>[MIF-CF-NF]</small>	68	97	99	38	37.0	9	-0.2	46	87	26	0.38	0.66	-5.10	35.58	33.07	27.16	57.92
92	3148	4-17-13	#+GDAR Game Day 449 <small>[MIF-CF-NF]</small>	75	97	98	52	38.5	9	-0.2	45	82	25	0.44	0.43	-3.80	34.19	27.20	28.25	54.34
93	3048	3-13-13	#+GDAR Game Day 449 <small>[MIF-CF-NF]</small>	73	90	96	39	36.0	3	2.6	42	78	23	0.42	0.52	2.47	29.12	23.64	29.08	50.58
94	3289	4-27-13	Sinclair Mountain Pass 4P138	95	110	106	34	40.5	-6	3.5	45	76	25	0.52	-0.06	10.82	41.49	19.74	18.98	55.77
95	3019	3-4-13	Sinclair Mountain Pass 4P138	78	96	94	39	39.0	3	1.4	41	74	24	0.59	0.25	1.91	32.15	19.19	29.36	57.97
96	3027	3-5-13	Sinclair Mountain Pass 4P138	76	96	96	46	37.0	2	0.6	42	81	22	0.61	0.42	2.63	31.67	27.40	29.14	62.04
97	3294	4-28-13	HD Dunn Legend 7009 <small>[DOF]</small>	79	97	97	40	36.0	6	1.4	40	71	23	0.34	0.49	3.35	30.89	16.03	27.86	63.30
98	3345	5-12-13	HD Dunn Game Day 1195	63	109	100	41	36.5	1+3	1+3.3	1+39	1+66	1+20	0.22	0.52	7.54	24.18	10.53	25.69	35.71
99	28	4-15-13	179 Game Day RBA 551	78	89	88	40	40.0	6	1.6	41	72	22	0.29	0.28	2.56	29.09	16.76	25.60	48.26
100	24	4-8-13	SAV Pioneer 7301 <small>[MIF-CF-NF]</small>	59	96	96	39	39.0	11	-1.8	54	93	27	0.29	0.57	-9.89	42.45	36.83	22.27	71.25
101	3410	5-26-13	HD Dunn Upward 1194	101	109	106	36	36.5	-4	5.8	56	98	26	0.59	0.19	-10.58	26.41	42.39	25.98	81.22
102	3065	3-23-13	HD Dunn Bextor 1266	79	104	103	40	35.0	0	3.4	56	94	24	0.38	0.59	-9.27	31.34	37.12	30.00	63.60
103	3369	5-16-13	Hyline Rito 18 <small>[MIF-MIF-NF]</small>	83	107	101	40	36.0	3	1.9	48	83	19	0.19	-0.07	5.08	33.21	26.99	15.24	44.15
104	3357	5-15-13	Hyline Rito 18 <small>[MIF-MIF-NF]</small>	83	104	105	40	38.0	0	4.1	49	89	18	0.27	0.14	3.54	25.11	34.15	19.17	56.52
105	3252	4-25-13	Cole Creek Black Cedar 46P	102	107	112	45	35.5	-8	4.9	53	95	27	0.16	0.37	-5.89	32.29	39.96	15.78	70.01

# HD Angus Bulls

Lot	Tattoo	Birth Date	Sire	BW	205 Ratio	365 Ratio	PAP	ACT SC	CED EPD	BW EPD	WW EPD	YW EPD	MILK EPD	MARB EPD	RE EPD	\$EN	\$W	\$F	\$G	\$B
106	3301	4-29-13	#+GDAR Game Day 449	89	107	105	42	36.5	-3	2.9	47	84	25	0.58	0.54	9.07	43.46	28.74	29.79	42.38
107	3311	4-30-13	#+GDAR Game Day 449	95	106	103	42	35.0	2	2.3	47	84	26	0.38	0.65	-4.76	32.75	28.74	27.52	62.04
108	3176	4-21-13	#+GDAR Game Day 449	78	105	99	46	36.5	4	1.1	50	84	20	0.28	0.55	3.34	36.79	27.27	23.62	45.43
109	3193	4-22-13	#+GDAR Game Day 449	73	100	99	48	34.5	9	-0.1	47	82	24	0.51	0.68	-0.79	37.57	26.22	32.49	62.57
110	3229	4-23-13	#+GDAR Game Day 449	89	100	100	43	37.5	1+7	1+6	1+44	1+78	1+23	1+41	1+50	9.80	42.59	22.68	27.69	50.72
111	3317	5-1-13	#+GDAR Game Day 449	74	100	97	41	34.5	8	0.1	41	69	26	0.36	0.65	1.55	36.62	13.16	30.25	52.98
112	3200	4-22-13	#+GDAR Game Day 449	82	96	95	48	34.5	8	0.9	41	77	26	0.53	0.48	-1.10	33.01	22.88	31.37	59.94
113	3212	4-22-13	#+GDAR Game Day 449	68	95	94	38	37.0	11	-0.7	47	83	25	0.34	0.51	-3.17	37.50	27.48	23.47	50.86
114	18	2-26-13	Sinclair Mountain Pass 4P138	60	96	105	36	35.0	7	-0.2	46	88	21	0.54	0.33	1.30	33.84	34.36	23.95	61.31
115	3047		Commercial				42	36.0												
116	3379	5-17-13	HD Dunn Great Plains 1293	90	102	105	38	37.0	0	4.1	44	77	22	0.34	0.40	0.48	23.47	21.45	28.34	73.67
117	3021	3-4-13	+OCC Rising Sun 739R	72	102	100	35	36.0	8	0.0	40	70	18	0.07	0.37	21.97	43.02	14.82	15.19	36.36
118	3051	3-15-13	+OCC Rising Sun 739R	74	99	96	42	38.0	2	1.3	36	61	22	0.07	0.45	9.53	31.34	6.05	14.99	40.76
119	3377	5-17-13	HD Dunn Upward 1194	90	112	101	45	35.0	4	3.0	61	98	27	0.47	0.43	-12.01	39.62	39.83	28.39	82.62
120	3282	4-26-13	HD Dunn Efficient 1218	68	112	96	49	37.0	6	0.9	49	74	25	0.47	0.15	-2.10	38.73	15.44	27.66	60.38
121	3259	4-25-13	#Mytty In Focus	53	104	99	37	39.0	14	0.1	54	86	26	0.45	-0.01	-6.45	42.13	27.84	26.15	59.09
122	3325	5-6-13	#CRA Bextor 872 5205 608	99	100	97	64	35.5	3	3.8	45	74	23	0.39	0.56	1.32	27.84	17.31	34.76	43.34
123	3373	5-16-13	179 Game Day RBA 551	80	105	97	37	36.0	4	0.7	48	79	24	0.45	0.24	-2.90	35.52	22.00	21.79	58.38
124	3337	5-10-13	179 Game Day RBA 551	80	99	100	40	35.5	1	2.5	49	83	20	0.27	0.71	0.46	29.71	26.50	23.15	58.61
125	3274	4-26-13	#+GDAR Game Day 449	81	100	97	38	37.5	6	0.3	43	72	22	0.32	0.49	5.77	36.21	15.83	24.17	39.18
126	3024	3-5-13	#+GDAR Game Day 449	75	98	98	40	34.0	-1	2.7	49	84	23	0.34	0.63	-3.73	29.93	27.76	27.43	51.99
127	3182	4-21-13	#+GDAR Game Day 449	65	98	91	42	38.5	12	-1.6	43	78	24	0.42	0.44	0.77	36.66	23.16	27.44	48.90
128	3293	4-28-13	#+GDAR Game Day 449	88	97	100	43	35.0	1	2.9	45	80	22	0.36	0.46	2.01	29.36	24.69	24.32	47.27
129	3213	4-22-13	#+GDAR Game Day 449	81	95	94	40	35.5	5	2.2	46	89	23	0.36	0.65	-2.24	29.65	35.66	26.91	56.42
130	3089	3-29-13	HD Dunn Mountain Pass 1087	73	107	102	36	35.5	4	1.0	49	83	26	0.57	0.52	-7.16	35.15	26.50	34.79	72.82

# HD SimAngus Bulls

Lot	Tattoo	Birth Date	Sire	BW	205 Ratio	365 Ratio	PAP	ACT SC	CED EPD	BW EPD	WW EPD	YW EPD	MILK EPD	MARB EPD	RE EPD	API	TI
38	A3196	4-22-13	Ellingson Legacy M229	83	107	103	36	37.5	13.5	-0.8	55.9	91.6	23.8	0.49	0.81	139.2	72
39	A3177	4-21-13	Ellingson Legacy M230	75	113	108	41	40.5	18	-2.4	53.6	81.5	20.9	0.33	0.83	143.8	68.5
40	A3251	4-24-13	Ellingson Legacy M231	84	115	111	39	36	10.5	0	59.9	94.9	23.7	0.35	0.58	125.3	69.1
41	A3138	4-17-13	Ellingson Legacy M232	75	118	111	41	37	14.9	-1.2	55.7	91.5	22.3	0.29	0.68	133	67.5
42	A3232	4-23-13	Ellingson Legacy M233	96	111	104	46	37	8.7	1.9	61.8	99	21.3	0.36	0.72	112.3	68
43	A3205	4-22-13	Ellingson Legacy M234	78	101	100	37	36.5	18.8	-2.7	49	79.5	21	0.2	0.82	141.9	63.4
44	A3331	5-7-13	SCR Pacesetter Y142	82	100	98	40	37	12.1	-1.2	45.7	77.5	25	0.35	0.52	123.5	62.4
45	A3378	5-17-13	SCR Pacesetter Y143	82	113	109	42	36	14	-1.4	50.4	77.8	21.4	0.27	0.56	124.4	63.2
46	A3398	5-20-13	SCR Pacesetter Y144	95	112	113	41	37.5	11.1	0.5	54.4	92.4	26.2	0.48	0.6	127.5	68.4
47	A3362	5-15-13	SCR Pacesetter Y145	83	103	97	39	39.5	10.6	-1	43.1	73.6	24.6	0.23	0.12	111.5	56.6
48	A3401	5-21-13	SCR Pacesetter Y146	82	102	106	36	40	11.8	-0.9	49.7	88.3	27.3	0.57	0.55	136.1	70.2
49	A3367	5-16-13	SCR Pacesetter Y147	82	99	97	40	35	10.2	-0.4	51.5	87.7	22.8	0.37	0.8	117.8	65.4

# HD REGISTERED ANGUS BRED HEIFERS

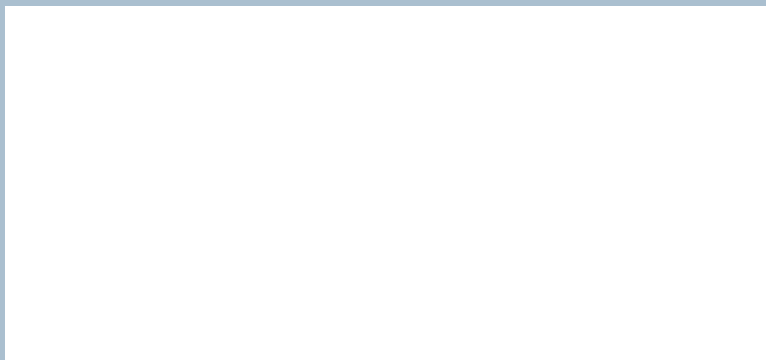
Lot	Tattoo	Birth Date	Sire	BE PD	WE PD	YE PD	MILK	\$EN	\$W	Calf Sire	Calf Due Date	Sex
135	3179	4-21-13	#Sitz Upward 307R <small>(MIF-CH-SE)</small>	1.3	57	108	31	-20.74	37.37	Pasture bred to Lots 4, 50 and 54	3-26-15	H
136	3363	5-15-13	HD Dunn Upward 1194	1.8	51	95	24	-3.99	35.78	Pasture bred to Lots 7, 32 and 117	3-26-15	H
137	3056	3-18-13	HD Dunn Efficient 1218	3.8	46	83	22	-2.04	23.88	Pasture bred to Lots 4, 50 and 54	3-28-15	H
138	3183	4-21-13	#Rito 616 of 4B20 6807 <small>(MIF-CH-SE)</small>	1.2	47	84	20	1.65	31.84	Pasture bred to Lots 4, 50 and 54	3-22-15	H
139	3082	3-26-13	HD Dunn Bextor 1266	2.2	51	91	21	-4.19	29.57	Pasture bred to Lots 7, 32 and 117	3-26-15	B
140	3120	4-14-13	HD Dunn Bextor 1266	1.9	57	100	23	-10.59	33.39	Pasture bred to Lots 7, 32 and 117	3-26-15	H
141	3157	4-18-13	Cole Creek Black Cedar 46P	3.0	49	84	15	10.19	29.73	SINCLAIR MOUNTAIN PASS 4P138	3-6-15	
142	3141	4-17-13	Sinclair Mountain Pass 4P138	1.0	44	85	24	-1.56	32.35	Pasture bred to Lots 4, 50 and 54	3-22-15	H
143	309	4-16-13	179 Game Day RBA 551	4.6	44	77	18	5.45	20.38	S A V FINAL ANSWER 0035	3-6-15	H
144	3296	4-28-13	#+GDAR Game Day 449 <small>(MIF-CH-SE)</small>	2.1	45	83	22	1.32	30.78	Pasture bred to Lots 7, 32 and 117	3-28-15	B
145	3043	3-11-13	#+GDAR Game Day 449 <small>(MIF-CH-SE)</small>	2.0	47	86	22	0.24	32.05	SITZ FINAL STATEMENT 10912	3-6-15	H
146	3068	3-23-13	HD Dunn Game Day 1171	0.0	43	71	22	2.98	33.75	Pasture bred to Lots 7, 32 and 117	3-26-15	B
147	3069	3-24-13	HD Dunn Game Day 1171	0.0	46	79	24	-2.90	34.28	Pasture bred to Lots 7, 32 and 117	3-26-15	B
148	3112	4-11-13	HD Dunn Game Day 1171	-0.5	51	83	25	-5.87	38.70	Pasture bred to Lots 7, 32 and 117	3-26-15	B
149	3132	4-16-13	HD Dunn Game Day 1171	0.7	49	83	23	-3.30	34.52	Pasture bred to Lots 7, 32 and 117	3-26-15	B



**HD DUNN & Son**  
ANGUS RANCH  
3240 North 3000 W  
Tetonia, ID 83452

Presorted First Class
US Postage Paid
PRP Companies
93401

Forwarding Service Requested



*16<sup>th</sup> Annual*

# **BULL SALE**

Friday, November 21, 2014  
TETONIA, IDAHO

*Selling:*

- 118 Registered Angus Bulls
- 12 Registered SimAngus Bulls
- 15 Registered Angus Bred Heifers
- 31 Commercial Angus Bred Heifers



**HD DUNN & Son**  
ANGUS RANCH

C.L. Simper  
307-380-6021  
rhodasimper@hotmail.com

Ken Dunn  
208-221-3866  
kendunn@tetonvalley.net

[www.HDDUNN.com](http://www.HDDUNN.com)

Cover photo by Ken Levy